



**ENSEMBLE
2025**

THEATRE FOR EVERYONE

Ensemble Theatre proudly acknowledges the
Cammaraigal people of the Eora nation as
customary owners of the land on which we work
and share our stories.

We pay our respects to Elders past and present.



HELLO AND WELCOME

I am thrilled to present another inspiring year of theatre here at Ensemble, bringing together the best writers, directors, creatives, and actors.

The season kicks off with a brand-new David Williamson comedy, *ARIA*, unpacking family dynamics with typical Williamson greatness — wry humour and sharp social commentary. From one domineering mother with delusions of grandeur to another, our second play of 2025 is Tennessee Williams' breakthrough hit, *THE GLASS MENAGERIE*, a classic tale of claustrophobia and family tensions. We then pay tribute to Harold Pinter with a double bill of his beautifully crafted classic comedies, *THE LOVER & THE DUMB WAITER*.

We're excited to stage two Australian premieres: Lauren Gunderson's *THE HALF-LIFE OF MARIE CURIE*, exploring the extraordinary friendship behind great scientific and social change and our final offering of 2025, Jeffrey Hatcher's fresh adaptation of Frederick Knott's classic murder mystery, *DIAL M FOR MURDER*.

Two Pulitzer Prize-winning plays also feature in the season: Eboni Booth's *PRIMARY TRUST*, a heart-warming tale

about embracing a new direction in life, and Sam Shepard's modern classic, *TRUE WEST*, where Hollywood opportunity sparks sibling rivalry.

David Williamson's second play this year is his wonderful classic, *EMERALD CITY*, a witty satire about moving to Sydney and taking on film and publishing industries. This is followed by the world premiere of *HOW TO PLOT A HIT IN TWO DAYS* by Melanie Tait, where we step inside the writers' room of Australian TV soap royalty as they plan to kill a major character.

We welcome back the tour de force that is Genevieve Hegney and Catherine Moore, using their comedic genius to tell the true story of the first female pilot taking on a major airline and paving the way for countless others, in *FLY GIRL*.

I hope you'll join us for an unforgettable season of theatre in 2025 and, as always, thank you for your ongoing support!

See you soon,
Mark Kilmer
Artistic Director

THEATRE UP CLOSE

Experience the intimacy of live theatre with our thrilling new season of ten captivating plays. Get up close and personal with new Australian works and reimagined classics that will have you in fits of laughter one moment and gasping in surprise the next.

Make the most of your Ensemble Theatre experience and subscribe to three or more plays to unlock the biggest savings, access a range of benefits and get in early to secure the best seats.

2025 SEASON

01 DAVID WILLIAMSON'S
ARIA

24 JAN – 15 MAR

02 **THE GLASS MENAGERIE**

BY TENNESSEE WILLIAMS

21 MAR – 26 APR

03 **THE LOVER &
THE DUMB WAITER**

BY HAROLD PINTER

2 MAY – 7 JUN

04 **THE HALF-LIFE
OF MARIE CURIE**

BY LAUREN GUNDERSON

13 JUN – 12 JUL

05 **PRIMARY TRUST**

BY EBONI BOOTH

19 JUN – 12 JUL

06 DAVID WILLIAMSON'S
EMERALD CITY

18 JUL – 23 AUG

07 **HOW TO PLOT A
HIT IN TWO DAYS**

BY MELANIE TAIT

29 AUG – 11 OCT

08 **TRUE WEST**

BY SAM SHEPARD

8 SEP – 11 OCT

09 **FLY GIRL**

BY GENEVIEVE HEGNEY &
CATHERINE MOORE

17 OCT – 22 NOV

10 **DIAL M FOR MURDER**

ADAPTED BY JEFFREY HATCHER
FROM THE ORIGINAL BY FREDERICK KNOTT

28 NOV – 11 JAN 2026

DAVID WILLIAMSON'S

ARIA

DIRECTED BY
JANINE WATSON

CAST OF 7 INCLUDES
TAMARA LEE BAILEY
ROWAN DAVIE
DANIELLE KING
TRACY MANN
SAM O'SULLIVAN
JACK STARKEY-GILL

A symphony of discord unfolds at Monique's annual family gathering, celebrating her three beloved sons' birthdays. While Monique's adoration for her boys knows no bounds, disdain for their wives is palpable.

Festivities crescendo and Monique takes the spotlight with a performance of a renowned opera aria, a poignant reminder of the dreams she sacrificed to raise her brood. In her mind, she was destined for the illustrious stages of La Scala, the Met and Covent Garden.

But beneath the facade of familial harmony, dissonance brews. Have the long-suffering wives reached their boiling point? David Williamson's ARIA is a darkly comedic exploration of the intricate dynamics and rivalry inherent within every family.

RUNNING TIME

1hr 40mins (no interval)

REC. AGE 12+

CONTENT WARNING

Adult themes,
coarse language

**"THE NATION'S MOST
PROLIFIC PLAYWRIGHT"**
The Australian

★★★★

**"ENTERTAINING AND
THOUGHT-PROVOKING"**
(THE GREAT DIVIDE)
Stage Noise





"IT'S A REMARKABLE
PLAY – RICHLY AND
TRADITIONALLY WRITTEN"
Stage Noise

"A SIGNIFICANT VOICE IN
AMERICAN THEATRE"
The Sydney Morning Herald

BY TENNESSEE WILLIAMS

THE GLASS MENAGERIE

DIRECTED BY
SHAUN RENNIE
CAST OF 4 INCLUDES
BLAZEY BEST
LAURENCE BOXHALL

Inspired by his own turbulent life, Tennessee Williams' timeless portrait of a shattered family is one of the most iconic dramas of the 20th century.

Amanda Wingfield can't help but dream of the past — a long-gone adolescence of lavish parties and high society suitors. But her present is anything but dazzling. Living in squalor with her two adult children, Tom and Laura, the bills are piling up and pressure to secure the Wingfield family's future is swelling. Will a gentleman caller be the answer to their problems?

With Blazey Best as the indomitable matriarch Amanda Wingfield, director Shaun Rennie (SUDDENLY LAST SUMMER) reignites Tennessee Williams' beautifully crafted and devastating slice of life. Don't miss this classic play that catapulted one of the world's most lauded storytellers into the global spotlight.

RUNNING TIME
2hrs 30mins (incl. interval)
REC. AGE 14+
CONTENT WARNING
Adult themes

Join us for a Harold Pinter double bill — twice the comedy, twice the menace — comprising two darkly funny one-act plays by one of theatre's most inventive and versatile writers.

BY HAROLD PINTER

THE LOVER

DIRECTED BY
MARK KILMURRY

CAST OF 3 INCLUDES
NICOLE DA SILVA
GARETH DAVIES

Trapped in the monotony of middle-class life, Richard and Sarah's marriage is on its last legs. Perhaps a lover could reignite their corroding relationship... or is escape from their stifling existence just a fantasy?

Burning with intrigue and uneasy humour, Harold Pinter spins a dangerous game of cat and mouse in this steamy psychological drama.

"PINTER IS ONE OF THE MOST
IMPORTANT PLAYWRIGHTS
OF OUR TIME"
The New York Times

"A DELICIOUS SATIRE OF
BOURGEOIS NORMS"
(THE LOVER)
The Guardian

★★★★★
"JANGLES THE NERVES...
GNAWS THE MIND"
(THE DUMB WAITER)
The Telegraph

THE DUMB WAITER

Ben and Gus have a job to do. As they await instructions, their silence is disturbed by the rattle of a dumb waiter delivering peculiar food orders. Who is making demands for extravagant dishes when all the two men have is a packet of crisps?

As the intensity builds in Pinter's comedy of claustrophobia, Ben and Gus begin to question everything... and so will you.

RUNNING TIME

2hrs 20mins (incl. interval)

REC. AGE 14+

CONTENT WARNING

Adult themes, references to sex and violence

DIRECTED BY
ANTHEA WILLIAMS
CAST OF 2 INCLUDES
REBECCA MASSEY

When two Nobel Prizes prove inadequate armour against a scandalous affair, Marie Curie turns to fellow scientist and trusted confidant Hertha Ayrton for literal and emotional sanctuary. Together they weather the storm of heartbreak, public scrutiny, and self-doubt.

Written with heart and humour, Lauren Gunderson — America’s most-produced living playwright — perfectly captures the resilience and determination that define true pioneers.

Despite tremendous personal and professional obstacles, two remarkable women continued to devote their lives to scientific innovation and social change. At its core, THE HALF-LIFE OF MARIE CURIE radiates the enduring power of female friendship.

RUNNING TIME
90mins (no interval)
REC. AGE 12+
CONTENT WARNING
Adult themes

BY LAUREN GUNDERSON

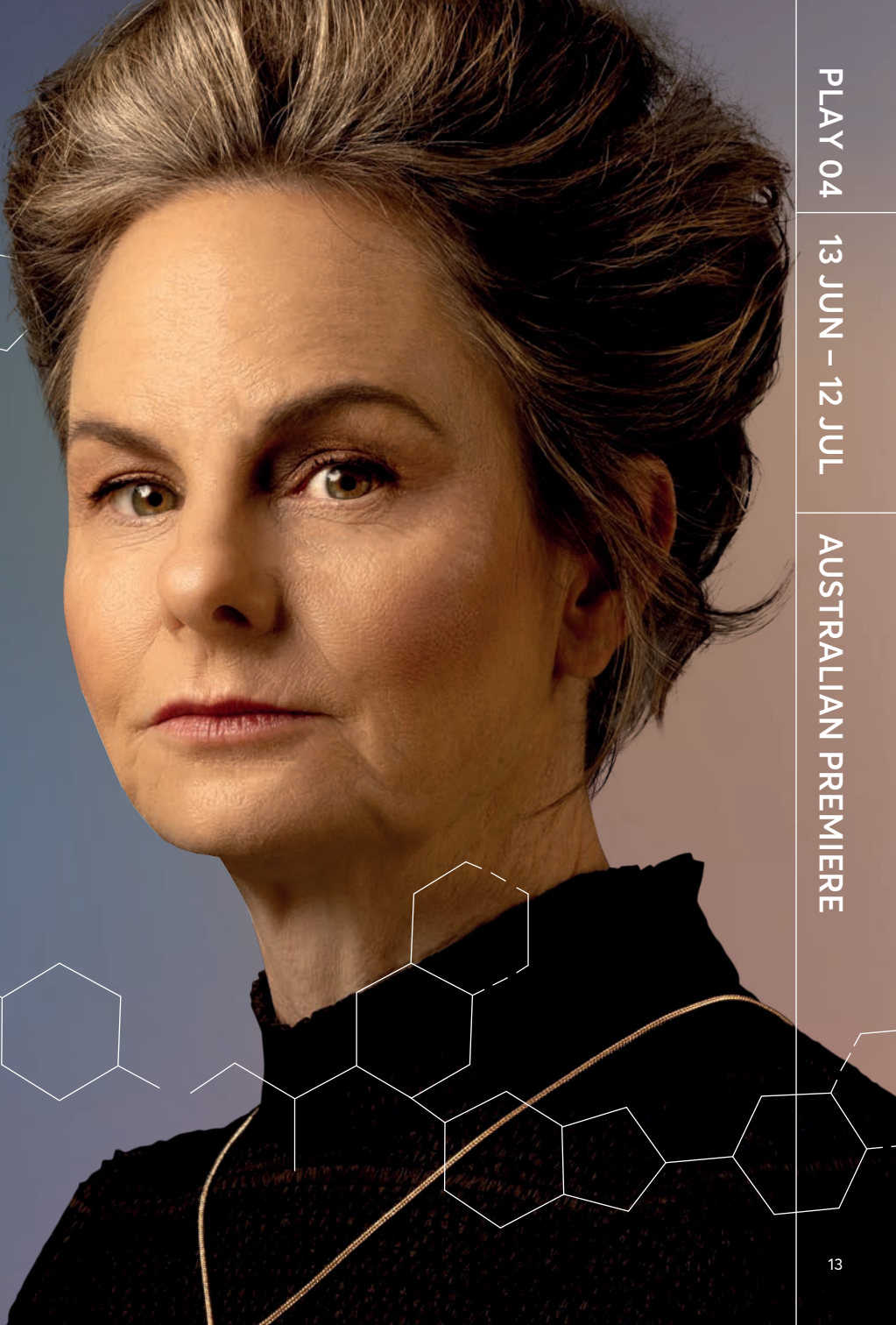
THE HALF-LIFE OF MARIE CURIE

★★★★★

“A 90-MINUTE SLICE OF
HISTORY BRIMMING WITH
WIT AND WISDOM”
New York Stage Review

★★★★★

“ENLIGHTENING AND
ENTERTAINING”
Time Out



PLAY 04

13 JUN – 12 JUL

AUSTRALIAN PREMIERE

BY EBONI BOOTH

PRIMARY TRUST

DIRECTED BY
DARREN YAP

CAST OF 4 INCLUDES
ALBERT MWANGI

Pulitzer Prize-winning and hailed as The New York Times Critic's Pick, PRIMARY TRUST is an uplifting offbeat comedy about finding the courage to change.

Meet Kenneth, a 38-year-old bookstore worker who spends his evenings sipping a mai tai (or two) with his best friend Bert. When a sudden layoff shatters his routine, Kenneth is forced to turn the page and embark on a new chapter of self-discovery. Will Bert stick around for the journey?

Experience an honest and funny night of intimate storytelling that will capture your imagination and fill you with hope as Kenneth dares to step into an unfamiliar world.

RUNNING TIME
90mins (no interval)
REC. AGE 14+
CONTENT WARNING
Adult themes, occasional
coarse language

"IT WILL RESTORE YOUR
FAITH IN THEATRE'S
ELEMENTAL STORYTELLING
POWERS"
The Observer

"[A] TENDER, DELICATELY
DETAILED PORTRAIT"
New York Times, Critic's Pick

"DARN NEAR PERFECT PLAY"
The Daily Beast



DIRECTED BY
MARK KILMURRY

CAST OF 6 INCLUDES:
GUY EDMONDS
RACHEL GORDON
MATT MINTO

Lately, critically acclaimed screenwriter Colin has had more box office bombs than smash-hit sensations. Swapping the drizzly streets of Melbourne for the shimmering shores of Sydney in pursuit of success, Colin discovers that the glitz and glamour of the Emerald City may be more alluring than he first thought... power, influence and the top harbour views are glittering at his fingertips, but what will he have to sacrifice?

David Williamson's refreshed iconic 1980's triumph picks apart the quest for success, and the rivalries, passion and compromises that are made along the way. Directed by Mark Kilmurry, don't miss Ensemble favourites — Guy Edmonds, Rachel Gordon and Matt Minto — in this timeless satire by one of Australia's most beloved social commentators.

RUNNING TIME
2hrs 30mins (incl. interval)
REC. AGE 12+
CONTENT WARNING
Adult themes, occasional coarse language

"A PLAYWRIGHT WHO FOREVER CHANGED THE WAY AUSTRALIANS TELL STORIES ON STAGE"
ArtsHub

"DAVID WILLIAMSON'S RAPID-FIRE SATIRE REMAINS A RELEVANT CRITIQUE OF AFFLUENCE AND ART"
Limelight

DAVID WILLIAMSON'S

EMERALD CITY

BY MELANIE TAIT

HOW TO PLOT A HIT IN TWO DAYS

DIRECTED BY
LEE LEWIS

CAST OF 5 INCLUDES
GEORGIE PARKER

It's 1985. TV prime time. Across Australia, millions of tear-stricken eyes are glued to their television sets in disbelief. *A Country Practice*'s beloved Molly Jones takes her final breath. Fade to black and she's gone.

Inside the story room, in a creative flurry powered by coffee, cigarettes and Fantaes, the eccentric squad of TV writers have nailed it — they've written the perfect death for Australia's darling. Hearts around the country are broken and forty years later, the pain is only just subsiding.

In this new comedy with Georgie Parker, *A Country Practice* addict and self-professed fanatic Melanie Tait imagines

what it was like for the writers to pen the episode that became a defining cultural moment in the nation's TV history. Whether you're a diehard fan of this iconic TV series or simply a lover of a cracking Australian story, you'll be rolling in the aisles with laughter at **HOW TO PLOT A HIT IN TWO DAYS**.

RUNNING TIME
90mins (no interval)
REC. AGE 12+
CONTENT WARNING
Adult themes, frequent coarse language

This production is made possible by the Commissioners' Circle.

★★★★★
"PURE THEATRICAL
RAMBUNCTIOUSNESS"
(THE APPLETON LADIES'
POTATO RACE)
ArtsHub

EXT. THE WRITERS' ROOM

JUDY: Ma
have stu
That's h
the funn

Enter Judy.
BERT: Is she okay?

...e is from
...g. I don't know
...he don't
...rocess

Enter Del
her a ccl
SHARON
go on, M

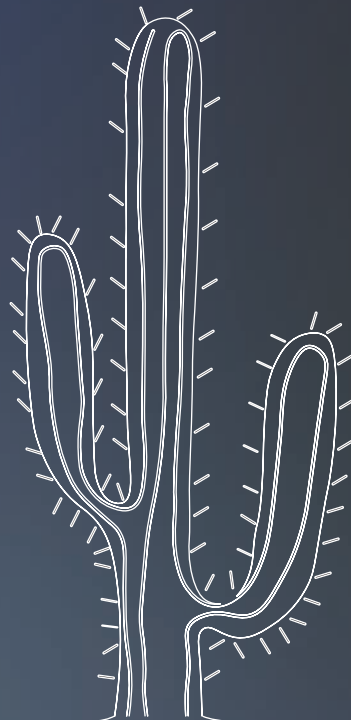
Sharon gives
and a biscuit.
We all right to
ates?

HOW TO PLOT A HIT IN TWO DAYS is a fictional play imagining the machinations of a hypothetical writers' room. It is not affiliated with the television show *A Country Practice*.

PLAY 07

29 AUG – 11 OCT

WORLD PREMIERE



BY SAM SHEPARD

TRUE WEST

"SHEPARD'S WRITING
AND HIS VISION ARE AS
POWERFUL AS EVER"
The New Yorker

"A PINTERESQUE AIR OF
BROODING MENACE"
The Guardian

DIRECTED BY
IAIN SINCLAIR
CAST OF 4 INCLUDES
SIMON MAIDEN

Set against the searing backdrop of the Californian desert, TRUE WEST is a wickedly funny and scorching tale of sibling rivalry.

40 miles east of Los Angeles, Austin has found a writing oasis in his mother's empty home while she's abroad. His latest film project has the potential to sell big in Hollywood. In the peace and quiet of the desert, he taps away at his typewriter — until the silence is shattered by his wayward brother, Lee, stumbling unexpectedly through the door. As they fight for control over each other, the pair are swept up in a volatile tornado of flared tempers, resentment and self-loathing destruction.

Pulitzer Prize winner Sam Shepard pits brother against brother in this critically acclaimed and muscular exploration of masculinity in America. Directed by Iain Sinclair (THE CARETAKER), this is a timeless modern classic not to be missed.

RUNNING TIME
1hr 40mins (no interval)
REC. AGE 14+
CONTENT WARNING
Adult themes, violence,
occasional coarse language



BY GENEVIEVE HEGNEY
& CATHERINE MOORE

FLY GIRL

★★★★★

"NOT ONLY EFFERVESCENT...
BUT ALSO TOUCHING AND
INSIGHTFUL"
(STILL UNQUALIFIED)
Limelight

"THE STRONG CHEMISTRY
BETWEEN THE PAIR MAKES
THIS A JOY TO WATCH"
(STILL UNQUALIFIED)
The Sydney Morning Herald

DIRECTED BY
JANINE WATSON

CAST OF 5 INCLUDES
GENEVIEVE HEGNEY
CATHERINE MOORE

It's the late 70's and the Australian Aviation Industry is a boy's club. The only job women are allowed involves wearing heels, lighting smokes and serving nuts. Deborah Lawrie's got the chops to fly the big jets, but Reg Ansett won't let her.

From the comedic geniuses who brought you UNQUALIFIED and STILL UNQUALIFIED, Genevieve Hegney and Catherine Moore use their trademark humour to unpack the absurd obstacles faced by a trailblazing aviatrix who refused to be grounded. Inspired by a true story, FLY GIRL embarks on Deborah's turbulent journey to becoming Australia's first female commercial pilot.

Fasten your seat belts for a soaring celebration of one woman's relentless fight to achieve her dreams. Let FLY GIRL fly!

RUNNING TIME

2hrs 15mins (incl. interval)

REC. AGE 12+

CONTENT WARNING

Adult themes, occasional coarse language

This production is made possible
by the Commissioners' Circle.

ADAPTED BY JEFFREY HATCHER
FROM THE ORIGINAL BY FREDERICK KNOTT

DIAL M FOR MURDER

7

DIRECTED BY
MARK KILMURRY
CAST OF 5 INCLUDES
GARTH HOLCOMBE
AMBER MCMAHON

The ever-so-charming ex-tennis-pro Tony Wendice has his eye on the prize. The prize in question? His wife Margot's eye-wateringly enormous inheritance. Fuelled by greed and revenge, he concocts the perfect plan to eliminate her from the equation. But after a small mishap, Tony must spin a web of lies to outsmart the cops to avoid a jaunt behind bars.

Twists, turns, danger and deception — the stage is set for an explosive night of theatre.

Made famous by Alfred Hitchcock's world-renowned 1950's film, Amber McMahon (A BROADCAST COUP) shines in Jeffrey Hatcher's spine-tingling new adaptation directed by Mark Kilmurry. Crackling with suspense, intrigue and unexpected surprises, you'll be guessing "whodunit" until the very last moment.

RUNNING TIME
2hrs 20mins (incl. interval)
REC. AGE 14+
CONTENT WARNING
Adult themes, violence

"A CAT-AND-MOUSE
WAITING GAME, WITH
ENOUGH TWISTS AND
SUDDEN HITCHES TO
KEEP THE CHILLS AND
THRILLS RUNNING"
The New York Times

"IT'S A HOLIDAY FOR
WHODUNIT FANS...
IT COULDN'T BE MORE
WELCOME"
New York Herald Tribune





MAKE THE MOST OF YOUR ENSEMBLE EXPERIENCE

DIRECTOR AT WORK

As part of a small group, witness our skilled directors and actors at work in the rehearsal room and discover how a play is brought to life on stage.

1. ARIA

with Janine Watson
Thu 9 Jan, 4pm – 5.30pm

2. EMERALD CITY

with Mark Kilmurry
Thu 26 Jun, 4pm – 5.30pm

3. HOW TO PLOT A HIT IN TWO DAYS

with Lee Lewis
Thu 14 Aug, 4pm – 5.30pm

Director at Work sessions are \$35 full price and \$25 for students. Spaces are strictly limited.

Book online at ensemble.com.au or call Box Office on (02) 8918 3400.

The Director at Work series is proudly supported by **Emma Hodgman** and **John Coorey**.

POST SHOW Q&A

Join an engaging conversation with the cast and creatives straight after you see the play. Simply purchase tickets to a Q&A performance, marked on the calendar in this brochure and on our website, then remain in your seat after the show armed with your burning questions.

FREE TEEN NIGHTS

Introduce the teenagers in your life to the magic of live theatre by inviting them to join you at one of our Free Teen Nights, highlighted on our performance calendar and the website. Complimentary tickets for 13 – 19 year olds can be booked alongside an adult subscription or ticket, subject to availability.

SCRIPTS FOR NEW AUSTRALIAN PLAYS

In partnership with **Currency Press** and thanks to the generous support of **Jenny Reynolds** and **Guy Reynolds AO**, published scripts for new Australian plays, which include a handy program, are available to purchase from the Box Office.

& SAVE SUBSCRIBE

WHY SUBSCRIBE?

A SUBSCRIPTION IS THE BEST WAY TO EXPERIENCE
ENSEMBLE'S 2025 SEASON.

THIS YEAR WE'VE MADE IT EASIER TO SUBSCRIBE,
WITH OUR 3 AND 4 PLAY PACKAGES AVAILABLE
WHEN OUR SEASON LAUNCHES.



BEST SEATS IN THE HOUSE

Subscribe early and secure the best availability
before our 2025 Season single tickets go on sale,
which we're planning to release in two stages.

**SINGLE TICKETS FOR THE FIRST 5 PLAYS
OF 2025 WILL GO ON SALE ON MONDAY
28 OCTOBER 2024:**

- ARIA
- THE GLASS MENAGERIE
- THE LOVER & THE DUMB WAITER
- THE HALF-LIFE OF MARIE CURIE
- PRIMARY TRUST

**SINGLE TICKETS FOR THE SECOND HALF
OF 2025 WILL GO ON SALE IN MARCH 2025
(SIGN UP TO ENSEMBLE E-NEWS TO BE
THE FIRST IN THE KNOW):**

- EMERALD CITY
- HOW TO PLOT A HIT IN TWO DAYS
- TRUE WEST
- FLY GIRL
- DIAL M FOR MURDER

**SUBSCRIBING
REALLY IS THE
BEST WAY TO
GUARANTEE
YOUR SEAT!**



EXCELLENT VALUE

The more plays you select for your subscription,
the more you save on full-price single tickets.

- 10 PLAYS SAVE AT LEAST 20%
- 8 OR 9 PLAYS SAVE AT LEAST 15%
- 5, 6 OR 7 PLAYS SAVE AT LEAST 12%
- 3 OR 4 PLAYS SAVE AT LEAST 10%



NO ADDITIONAL FEES

Subscription bookings are free from
transaction fees.



BRING YOUR FRIENDS

Want to invite family or friends to join you for
one or two plays? Access the biggest savings on
additional tickets when you include them in your
subscription booking; all tickets will be at your
discounted subscriber rate.

If you want to add a seat for a friend at a later
date, they'll receive 10% off their ticket but we've
made it much easier to book online! No need to
call Box Office, log in with your subscriber details
on the Ensemble website to access the saving.



EXTRA TIME TO PAY

Spread the cost of your subscription across three
payments. A \$6 fee and conditions apply.



EXCHANGE FOR FREE

Plans change? Your first ticket exchange is
fee-free if you exchange your tickets at least
48 hours before your performance. You'll
receive an email confirmation with your new
performance date and time.



MISSED PERFORMANCE

Missed your show and want to reschedule?
You can purchase tickets for another
performance of the show you missed for just \$25
(subject to availability). Simply contact the Box
Office to arrange your new tickets.



EXCLUSIVE OFFERS

Get discounts on cinema tickets, classical music,
wine and much more with your exclusive Arts
Bonus card.



EAT AT THE THEATRE

Join us downstairs at Bayly's Bistro and save
10% on your food order.

10 PLAY SUBSCRIBERS

**Exclusive benefits for those who book the
full 2025 season:**

- Unlimited fee-free ticket exchanges
- Receive a complimentary Ensemble
shopping bag.

SUBSCRIBE EARLY TO WIN*

**Book a 10-play 2025 subscription
before Friday 25 October 2024
and you could win:**

- A 10-play 2026 subscription for
two people
- A 12-bottle case of Hungerford
Hill's Fish Cage Hunter Valley
Semillon Sauvignon Blanc 2023

*T&Cs apply: To enter, submit your completed subscription form by
11.59pm on 25 October 2024. The prize consists of two 10-play 2026
subscriptions. The winner will be drawn on 4 November 2024 and
notified by phone and email. The winner is responsible for booking
their 2026 subscription and collection of wine from Ensemble Theatre.

HOW TO SUBSCRIBE

ONLINE

ensemble.com.au/subscribe

Now you can select your seats when purchasing online.

It's the quickest way to secure your tickets.

CALL US

(02) 8918 3460

We will fill out your booking form over the phone. Please note, tickets are not booked directly at the time of call, your form will join the queue to be processed.

BOOKING FORM

Pull out the booking form from this brochure. Complete it and send to us by:

POST

Ensemble Theatre Subscriptions
78 McDougall Street
Kirribilli NSW 2061

EMAIL

subscriptions@ensemble.com.au

IN-PERSON

Feel free to drop by the Box Office to hand in your form and if you require assistance, our friendly team will be available to help.

Please note, we process booking forms in order of receipt so send your form in as early as possible.

If you wish to sit next to another subscriber or pay separately, a booking form is required for each credit card holder and must be submitted together. If we receive your forms separately, we cannot guarantee that we will be able to seat you together.

KEY DATES

MONDAY 19 AUGUST 2024

2025 Season launches

TUESDAY 20 AUGUST 2024

Subscriptions go on sale at 10am

FRIDAY 25 OCTOBER 2024

Last day to secure the best available seats before single tickets for the first 5 plays of 2025 go on sale

MONDAY 28 OCTOBER 2024

Single tickets for the first 5 plays of our 2025 season go on sale at 10am

MARCH 2025

Sign up to the Ensemble e-news to be the first in the know about when single tickets go on sale for the second half of our 2025 Season

SUBSCRIPTION PRICING

Our 2025 Season pricing varies slightly as we will be presenting two David Williamson plays in response to audience demand. For more info, visit ensemble.com.au/subscribe or contact us at boxoffice@ensemble.com.au

PRICE PER TICKET including extra tickets for friends or family when purchased with your subscription

PLAYS	SUBSCRIPTION TYPE	Full Price	Seniors Card	Pensioner / Groups 10+
THE GLASS MENAGERIE THE LOVER & THE DUMB WAITER THE HALF-LIFE OF MARIE CURIE PRIMARY TRUST HOW TO PLOT A HIT IN TWO DAYS TRUE WEST FLY GIRL DIAL M FOR MURDER	Previews			
	10 PLAYS	\$67	\$64	\$60
	8 & 9 PLAYS	\$71	\$68	\$64
	5, 6 & 7 PLAYS	\$74	\$71	\$67
	3 & 4 PLAYS	\$76	\$73	\$69
	In Season			
	10 PLAYS	\$72	\$69	\$65
	8 & 9 PLAYS	\$76	\$73	\$69
	5, 6 & 7 PLAYS	\$79	\$76	\$72
	3 & 4 PLAYS	\$81	\$78	\$74

DAVID WILLIAMSON PLAYS	SUBSCRIPTION TYPE	Full Price	Seniors Card	Pensioner / Groups 10+
ARIA EMERALD CITY	Previews			
	10 PLAYS	\$70	\$67	\$63
	8 & 9 PLAYS	\$74	\$71	\$67
	5, 6 & 7 PLAYS	\$77	\$74	\$70
	3 & 4 PLAYS	\$79	\$76	\$72
	In Season			
	10 PLAYS	\$75	\$72	\$68
	8 & 9 PLAYS	\$79	\$76	\$72
	5, 6 & 7 PLAYS	\$82	\$79	\$75
	3 & 4 PLAYS	\$84	\$81	\$77

GREAT VALUE FOR STUDENTS AND UNDER 30s

Looking for affordable theatre? We offer significant savings for full-time students and under 30s.

Students/Under 30 Tickets	Price Per Ticket
Previews	\$40
In Season	\$43

SINGLE TICKET PRICES

From Monday 28 October 2024, non-subscription prices will be listed on our website, ensemble.com.au
Single ticket pricing is subject to change and availability.

2025 PERFORMANCE CALENDAR

JANUARY			FEBRUARY			MARCH			APRIL			MAY		
Sat			S	1	3pm, 8pm	S	1	3pm, 8pm	S			S		
Sun			S	2	5pm	S	2	5pm	S			S		
Mon			M	3		M	3		M			M		
Tue			T	4	7.30pm	T	4	7.30pm	T	1	7.30pm	T		
Wed	1		W	5	7.30pm	W	5	7.30pm	W	2	7.30pm	W	THE LOVER & THE DUMB WAITER	
Thu	2		T	6	11am, 7.30pm	T	6	11am, 7.30pm	T	3	11am, 7.30pm	T	1	
Fri	3		F	7	7.30pm	F	7	7.30pm	F	4	7.30pm Q&A	F	2	7.30pm P
Sat	4		S	8	3pm, 8pm	S	8	3pm, 8pm	S	5	3pm, 8pm	S	3	2pm P, 8pm P
Sun	5		S	9	5pm	S	9	5pm	S	6	5pm	S	4	5pm P
Mon	6		M	10		M	10		M	7		M	5	
Tue	7		T	11	11am Q&A	T	11	7.30pm	T	8	11am Q&A	T	6	11am, 7.30pm
Wed	8		W	12	7.30pm	W	12	7.30pm FT	W	9	7.30pm	W	7	7.30pm Opening
Thu	9		T	13	11am, 7.30pm	T	13	11am, 7.30pm	T	10	11am AD, 7.30pm	T	8	7.30pm
Fri	10		F	14	7.30pm	F	14	7.30pm	F	11	7.30pm	F	9	7.30pm
Sat	11		S	15	3pm, 8pm	S	15	3pm, 8pm	S	12	3pm AD, 8pm	S	10	3pm, 8pm
Sun	12		S	16	5pm	S	16		S	13	5pm	S	11	5pm
Mon	13		M	17		M	17		M	14		M	12	
Tue	14		T	18	7.30pm	T	18		T	15	11am, 7.30pm	T	13	7.30pm
Wed	15		W	19	7.30pm	W	19	THE GLASS MENAGERIE	W	16	7.30pm	W	14	7.30pm
Thu	16		T	20	11am AD, 7.30pm	T	20		T	17	11am , 7.30pm	T	15	11am, 7.30pm
Fri	17		F	21	7.30pm	F	21		F	18	Good Friday	F	16	7.30pm Q&A
Sat	18		S	22	3pm AD, 8pm	S	22	2pm P, 8pm P	S	19	3pm, 8pm	S	17	3pm, 8pm
Sun	19		S	23	5pm	S	23	5pm P	S	20	Easter Sunday	S	18	5pm
Mon	20		M	24		M	24		M	21	Easter Monday	M	19	
Tue	21		T	25	7.30pm Q&A	T	25	11am, 7.30pm	T	22	11am, 7.30pm	T	20	7.30pm
Wed	22	ARIA	W	26	7.30pm	W	26	7.30pm Opening	W	23	7.30pm FT	W	21	7.30pm
Thu	23		T	27	11am, 7.30pm	T	27	7.30pm	T	24	11am, 7.30pm	T	22	11am Q&A, 7.30pm
Fri	24		F	28	7.30pm	F	28	7.30pm	F	25	Anzac Day	F	23	7.30pm
Sat	25	2pm P, 8pm P				S	29	3pm, 8pm	S	26	3pm, 8pm	S	24	3pm AD, 8pm
Sun	26	5pm P				S	30	5pm	S	27		S	25	5pm
Mon	27	Public Holiday				M	31		M	28		M	26	
Tue	28	11am, 7.30pm							T	29		T	27	7.30pm
Wed	29	7.30pm Opening							W	30		W	28	7.30pm
Thu	30	7.30pm										T	29	11am AD, 7.30pm
Fri	31	7.30pm										F	30	7.30pm
Sat												S	31	3pm, 8pm

JUNE				JULY				AUGUST			SEPTEMBER		
S				S				S			S		
S	1	5pm		S				S			S		
M	2			M				M			M	1	
T	3	11am, 7.30pm		T	1	11am Q&A, 6.15pm	8.15pm	T			T	2	11am, 7.30pm Opening
W	4	7.30pm FT		W	2	11am, 6.15pm	8.15pm	W			W	3	7.30pm
T	5	11am, 7.30pm		T	3	8.15pm	11am Q&A, 6.15pm	T			T	4	
F	6	7.30pm		F	4	8.15pm	11am	F	1	7.30pm Q&A	F	5	7.30pm Q&A
S	7	3pm, 8pm		S	5	2pm AD	4.30pm, 8.15pm	S	2	3pm, 8pm	S	6	2pm, 8.15pm
S	8			S	6	5pm	2pm	S	3	5pm	S	7	1pm, 5pm
M	9	Public Holiday		M	7			M	4		M	8	6.30pm P
T	10			T	8	8.15pm	11am, 6.15pm	T	5	11am Q&A	T	9	11am
W	11	THE HALF-LIFE OF MARIE CURIE		W	9	8.15pm FT	11am AD, 6.15pm FT	W	6	7.30pm	W	10	11am, 7.30pm
T	12		T	10	11am AD	8.15pm Q&A	T	7	11am, 7.30pm	T	11	7.30pm	
F	13	7.30pm P		F	11	8.15pm	11am, 6.15pm	F	8	7.30pm	F	12	11am, 7.30pm Opening
S	14	2pm P, 8pm P		S	12	4.30pm, 8.15pm	2pm AD	S	9	3pm, 8pm	S	13	4.30pm, 8.15pm
S	15	5pm P		S	13			S	10	5pm	S	14	2pm
M	16			M	14			M	11		M	15	
T	17	11am, 7.30pm Opening	PRIMARY TRUST	T	15			T	12	7.30pm	T	16	11am Q&A, 6.15pm
W	18	8.15pm		W	16	EMERALD CITY		W	13	7.30pm	W	17	11am, 6.15pm
T	19		8.15pm P	T	17			T	14	11am AD, 7.30pm	T	18	8.15pm
F	20	6.15pm	8.15pm P	F	18	7.30pm P		F	15	7.30pm	F	19	7.30pm
S	21	4.30pm, 8.15pm Q&A	2pm P	S	19	2pm P, 8pm P		S	16	3pm AD, 8pm	S	20	2pm AD
S	22	2pm	5pm P	S	20	5pm P		S	17	5pm	S	21	5pm
M	23			M	21			M	18		M	22	
T	24		11am, 7.30pm Opening	T	22	11am, 7.30pm		T	19	11am, 7.30pm	T	23	6.15pm
W	25	11am, 6.15pm	8.15pm	W	23	7.30pm Opening		W	20	7.30pm FT	W	24	8.15pm
T	26	11am, 6.15pm	8.15pm	T	24	7.30pm		T	21	11am , 7.30pm	T	25	11am AD
F	27	8.15pm	11am, 6.15pm	F	25	7.30pm		F	22	7.30pm	F	26	11am
S	28	4.30pm, 8.15pm	2pm	S	26	3pm, 8pm		S	23	3pm, 8pm	S	27	4.30pm, 8.15pm
S	29	2pm	5pm	S	27	5pm		S	24		S	28	2pm
M	30			M	28			M	25		M	29	
				T	29	7.30pm		T	26	HOW TO PLOT A HIT IN TWO DAYS	T	30	11am
				W	30	7.30pm		W	27				
				T	31	11am, 7.30pm		T	28				
								F	29	7.30pm P			
								S	30	2pm P, 8pm P			
								S	31	5pm P			

2025 PERFORMANCE CALENDAR

OCTOBER				NOVEMBER				DECEMBER				JANUARY 2026			
Sat				S	1	3.30pm, 8pm		S				S			
Sun				S	2	5pm		S				S			
Mon				M	3			M	1			M			
Tue				T	4	11am Q&A		T	2	11am, 7.30pm		T			
Wed	1	11am, 6.15pm	8.15pm FT	W	5	7.30pm		W	3	7.30pm Opening		W			
Thu	2	7.30pm	11am AD	T	6	11am, 7.30pm		T	4	7.30pm		T	1	New Year's Day	
Fri	3	8.15pm	11am, 6.15pm	F	7	7.30pm		F	5	7.30pm		F	2	7.30pm	
Sat	4	4.30pm, 8.15pm	2pm	S	8	3.30pm, 8pm		S	6	3pm, 8pm		S	3	3pm, 8pm	
Sun	5	2pm	5pm	S	9	5pm		S	7	5pm		S	4	5pm	
Mon	6	Public Holiday	Public Holiday	M	10			M	8			M	5		
Tue	7	11am, 6.15pm	8.15pm	T	11	7.30pm		T	9	7.30pm		T	6	11am	
Wed	8	11am, 6.15pm FT	8.15pm	W	12	7.30pm		W	10	7.30pm		W	7	7.30pm FT	
Thu	9	8.15pm	11am, 6.15pm	T	13	11am AD, 7.30pm		T	11	11am, 7.30pm		T	8	11am AD, 7.30pm	
Fri	10	8.15pm	6.15pm	F	14	7.30pm Q&A		F	12	7.30pm Q&A		F	9	7.30pm	
Sat	11	4.30pm, 8.15pm	1.30pm	S	15	3.30pm AD, 8pm		S	13	3pm, 8pm		S	10	3pm AD, 8pm	
Sun	12			S	16	5pm		S	14	5pm		S	11	5pm	
Mon	13			M	17			M	15			M	12		
Tue	14			T	18	11am, 7.30pm		T	16	11am Q&A		T	13		
Wed	15	FLY GIRL		W	19	7.30pm FT		W	17	7.30pm		W	14		
Thu	16			T	20	11am, 7.30pm		T	18	11am, 7.30pm		T	15		
Fri	17			F	21	7.30pm		F	19	7.30pm		F	16		
Sat	18	2pm P, 8pm P		S	22	3.30pm, 8pm		S	20	3pm, 8pm		S	17		
Sun	19	5pm P		S	23			S	21	5pm		S	18		
Mon	20			M	24			M	22			M	19		
Tue	21	11am, 7.30pm		T	25			T	23	11am, 7.30pm		T	20		
Wed	22	7.30pm Opening		W	26	DIAL M FOR MURDER		W	24			W	21		
Thu	23	7.30pm		T	27			T	25	Christmas Day		T	22		
Fri	24	7.30pm		F	28	7.30pm P		F	26	Boxing Day		F	23		
Sat	25	3.30pm, 8pm		S	29	2pm P, 8pm P		S	27	3pm, 8pm		S	24		
Sun	26	5pm		S	30	5pm P		S	28	5pm		S	25		
Mon	27							M	29			M	26		
Tue	28							T	30	11am, 7.30pm		T	27		
Wed	29	7.30pm						W	31			W	28		
Thu	30	11am, 7.30pm										T	29		
Fri	31	7.30pm										F	30		
Sat												S	31		

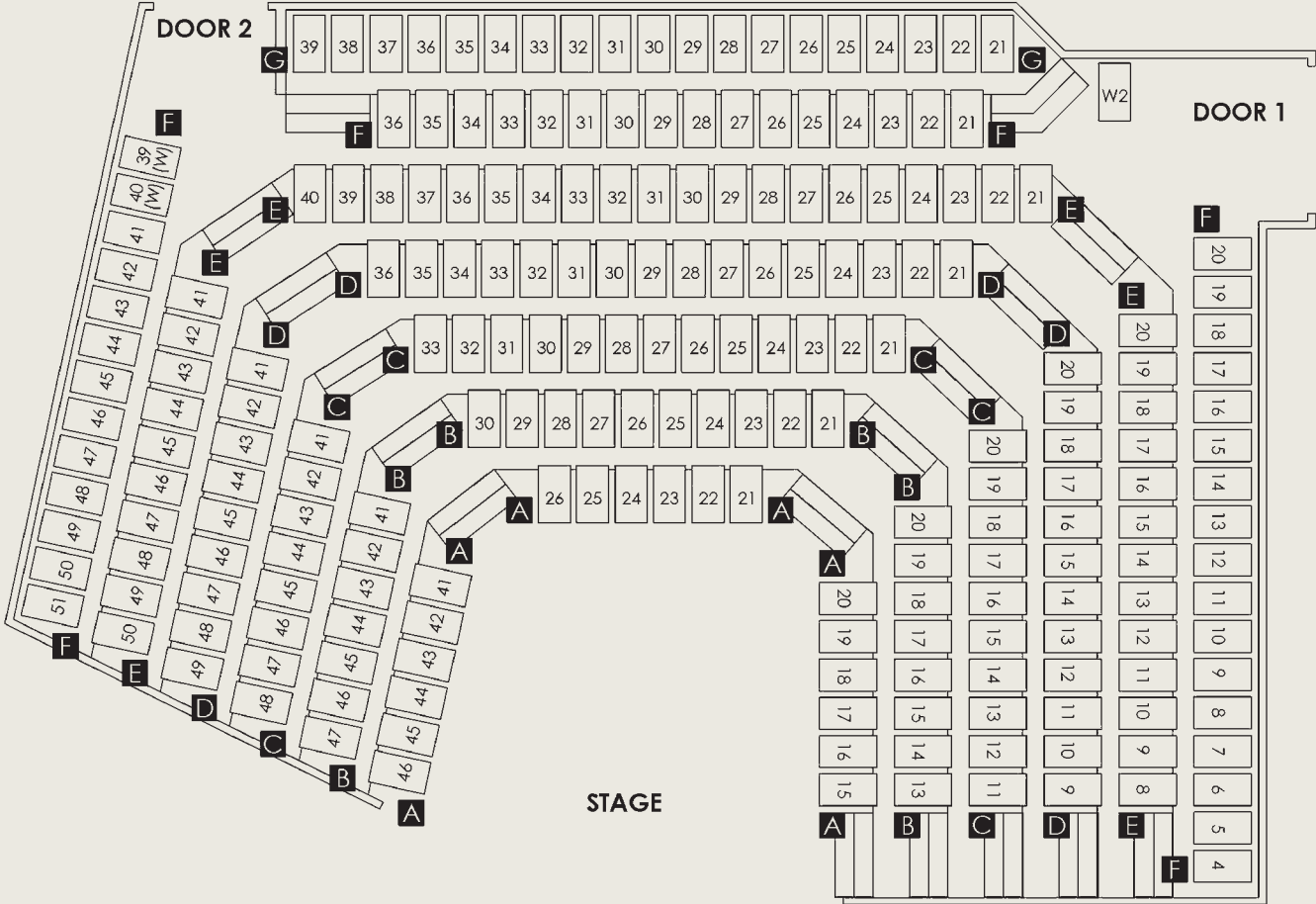
FORM POSITIONED HERE – PANTONE 7677 DOES NOT PRINT

INSERT FORM – 2x page booking form unnumbered]

INSERT FORM – 2x page booking form unnumbered]

SEAT MAP

The experience from all seats is excellent in our intimate theatre. Please refer to the seat map to assess where you'll be most comfortable and contact the Box Office to discuss specific seating or access requirements.





ACCESSIBILITY



AUDIO-DESCRIBED PERFORMANCES

Vision Australia provides a complimentary audio description service for audience members who are vision impaired. Audio-described performances are marked AD in the performance calendar and are listed on our website.



HEARING LOOP

Our upgraded hearing loop amplifies sound to seats throughout the theatre. If you would like to use this service, please let us know when booking and a receiver will be available at the Box Office.



WHEELCHAIR SEATS AND LEVEL ACCESS

Ensemble Theatre is fully accessible with wheelchair-friendly seating, including street-level access to row F in our auditorium, and lift access to facilities and Bayly's Bistro. If you have seating requirements, please let us know when completing your subscription form.

TICKET INFO

CONCESSION DISCOUNTS

Discounts are available for:

- Seniors (with valid Seniors Card)
- Pensioners (with valid Pensioner Concession Card)
- Australian full-time students (with valid Student Card)
- Under 30s (aged 30 and under at the time of booking)
- Media, Entertainment & Arts Alliance (MEAA) members
- Australian Writers' Guild (AWG) members

Proof of age or a valid concession card must be provided at the time of booking.

GROUPS

Discounts and priority bookings are available to groups of ten or more.

CONDITIONS

Tickets cannot be refunded after purchase except as outlined in the Live Performance Australia (LPA) Code of Practice. See liveperformance.com.au for details. For all other conditions of sale including transaction fees and ticket exchanges, please see our website ensemble.com.au or contact Box Office at **(02) 8918 3400**. Please note, subscription bookings do not have any transaction fees.



Map Illustration by Peita Blythe | @peitablythe

GETTING HERE IS EASY

Just a hop, skip and a jump north of the bridge from Sydney's CBD, Ensemble Theatre is nestled over the water in Kirribilli.

B	Ensemble weekday matinee bus departs from Ennis Road, outside Milsons Point station, from 10am – 10.45am, then returns after the show.
P	Free (but time-limited) parking near Ensemble.
F	Jump on a ferry to Milsons Point Wharf or Kirribilli Wharf.
T	Take the train to Milsons Point, one stop north after Wynyard Station.
---	15 minute walk from Milsons Point Wharf to Ensemble.
---	5 minute walk from Milsons Point Station to Ensemble.
---	15 minute walk from Kirribilli Wharf to Ensemble.



BAYLY'S BISTRO

Bayly's Bistro is the ideal location for delicious, fresh food with a spectacular view, and a guarantee of getting you to your show on time.

With Head Chef Ian Paul Aguilar Alarcon at the helm, Bayly's offers modern Australian fare with an emphasis on local, seasonal and thoughtfully sourced produce.

Enjoy an à la carte menu of delicately cooked seafood, slow-braised meats and delectable desserts, perfectly paired with a bottle from our superb wine selection.

OPENING TIMES

Tue – Sat | Open for lunch after weekday matinees and dinner service coincides with evening show times. See the booking form or visit ensemble.com.au/bistro for more info.

TO BOOK

Call **(02) 8918 3455**

Email baylys@ensemble.com.au

Reserve online ensemble.com.au/bistro

Please note: Online reservations close 3 hours prior to dining. Call the Bistro for any last-minute bookings.

Ensemble Theatre subscribers get 10% off food orders (drinks not included), so remember to present your Arts Bonus Card when you dine.



JIM'S FOYER BAR

"JIM IS A VITAL PART OF THE FABRIC THAT MAKES ENSEMBLE SUCH A GREAT PLACE TO BE ASSOCIATED WITH"

David Williamson AO

Soak in the sprawling harbour views while sipping on your drink at Jim's Foyer Bar. With exceptional customer service and a quality wine list featuring selections from our friends at **Hungerford Hill**, it's the perfect spot to catch up with friends before the show or debrief with a digestif afterwards.

Indulge in our tasty cheese plates and enjoy the perfect pre or post-show experience.

Cheers!

OPENING TIMES

The bar is open an hour before all performances, during intervals and after the show (except after Sunday performances).



SUPPORT US

BRINGING A PLAY TO THE STAGE TAKES A TEAM EFFORT,
SO IF YOU WOULD LIKE TO BE A PART OF OUR
COMMUNITY OF CREATIVE MINDS, PLEASE JOIN US.

WHY GIVE?

"A DONATION TO ENSEMBLE ENSURES THAT THE THEATRE WE ALL LOVE, AND THE STORIES IT TELLS, CAN CONTINUE TO BE CHERISHED BY FUTURE GENERATIONS."

Georgie Parker,
Ensemble Ambassador

INSPIRE CREATIVITY: Your donations enable the ongoing development of new and innovative productions.

NURTURE TALENT: Contribute to the development of the next generation of artists with programs like the Ensemble Theatre Sandra Bates Director's Awards providing emerging talent with the resources and opportunities they need to thrive.

COMMUNITY ENGAGEMENT: Help us expand our Ensemble Education Outreach Program, making theatre accessible to all and fostering a love for the arts in people of all ages.

THEATRE FOR EVERYONE: Ensure Ensemble continues to present 10 productions annually encompassing new works and re-imagined classics that captivate audiences.

WAYS TO GIVE

INDIVIDUAL DONATIONS: Every contribution, big or small, makes a significant impact. Please consider pledging a tax-deductible gift along with your 2025 subscription or donate online at ensemble.com.au/support-us

CORPORATE SPONSORSHIPS: Partner with us to achieve shared goals and benefit from unique engagement opportunities.

LEGACY GIVING: Ensure the future of Ensemble and enrich the lives of the next generation by including us in your estate planning.

JOIN US

WHAT DOES IT TAKE TO BE INVOLVED?
A belief and passion for theatre. To find out more about joining our community of supporters, please contact **Stephen Attfield, Philanthropy & Partnerships Manager** on **02 8918 3400** or stephena@ensemble.com.au



"MY STUDENTS STILL SPEAK OF AND DRAW INSPIRATION FROM **THE ONE, MR BAILEY'S MINDER** AND **ALONE IT STANDS** IN OUR LESSONS. IT IS BECAUSE OF ENSEMBLE THAT THEY HAVE REAL-LIFE EXPERIENCES OF LIVE THEATRE AND THAT IS SO SPECIAL AND BENEFICIAL."

Kaylee Cashman, Drama Teacher, Eagle Vale High School

Ensemble Ed is our commitment to the next generation of Australian theatre made possible by the generosity of **The Balnaves Foundation**. We provide exciting and accessible creative educational experiences, with a strong focus on students from regional and remote Australia, and those experiencing disadvantage. Our initiatives nurture skills, increase equity of access to creative opportunities and ensure every student has the chance to take a seat with Ensemble.

ENSEMBLE EDUCATION OUTREACH PROGRAM

Celebrating its tenth year, our Ensemble Education Outreach Program is igniting the love for live theatre among students nationwide. In 2025, thanks to the generous support of the **Clitheroe Foundation**, complimentary tickets to dedicated schools' performances of Tennessee Williams' classic **THE GLASS MENAGERIE** and the world premiere of **FLY GIRL** by Genevieve Hegney and Catherine Moore will be available to eligible school groups. Following the show, students engage with the cast and director in an artist-led discussion. Lunch and snacks are provided by our partner **Foodbank**, to ensure they get the full experience of a day at the theatre.

To register your interest as a partner or check your school's eligibility for the Outreach Program, please email education@ensemble.com.au

SMITH FAMILY'S SMARTS PROGRAM

In 2025, we're delighted to continue working in collaboration with **The Smith Family's SmArts Program** to provide students with an immersive theatre experience. A week-long program of workshops gives them a taste of various production disciplines including set design, directing, stage management and performance.

"WE SEE OUR PARTNERSHIP WITH ENSEMBLE THEATRE AS AN EXCITING COLLABORATION THAT IS PROVIDING DISADVANTAGED YOUNG PEOPLE LIVING IN LOW SOCIO-ECONOMIC OR MARGINALISED COMMUNITIES ACCESS TO LIVE THEATRE"

Anne Samonte, The Smith Family

SCHOOL STUDENT TICKETS

\$25 school student or teacher tickets are available for all 10 plays and our Director at Work sessions. Receive a complimentary teacher's ticket for every 12 paying students. For info on how to book, visit ensemble.com.au/education



ENSEMBLE DEVELOPMENT

"I'VE BEEN DIRECTING IN THE INDEPENDENT THEATRE SECTOR FOR FOUR YEARS NOW, SO THIS IS A PHENOMENAL OPPORTUNITY AT THIS STAGE IN MY CAREER TO OBSERVE TWO ACCOMPLISHED DIRECTORS IN THE REHEARSAL ROOM. I'LL BE ASSISTING PRISCILLA JACKMAN, WHO WAS HERSELF A 2016 RECIPIENT OF THE AWARD AND IS NOW A LEADER IN THE AUSTRALIAN ARTS INDUSTRY. IT'S AN AMAZING OPPORTUNITY."

Miranda Middleton,
2024 Recipient

PROVIDING PATHWAYS TO EMERGING DIRECTORS

The Ensemble Theatre Sandra Bates Director's Awards, now in its tenth year, continues to offer emerging directors a unique opportunity to hone their skills. Two successful recipients receive a paid Assistant Director role supporting season plays and other development projects. The 2025 award is proudly supported by **Jinnie and Ross Gavin**.

We are delighted to feature two past recipients in our 2025 season:

Janine Watson (2016 recipient)
directing ARIA and FLY GIRL

Shaun Rennie (2017 recipient)
directing THE GLASS MENAGERIE

COMMISSIONING NEW AUSTRALIAN STORIES

Since 2016, Ensemble has commissioned seventeen new Australian plays and premiered twenty-five, with two more set to debut by the end of 2025. We've commissioned playwrights such as Vanessa Bates, Hilary Bell, Genevieve Hegney, Mark Kilmurry, Catherine Moore, Joanna Murray-Smith, Sam O'Sullivan, Jamie Oxenbould and Melanie Tait.

In 2022 we launched the Commissioners' Circle; a group of like-minded Ensemble supporters who are passionate about storytelling and supporting artists. The Circle is committed to ensuring two new Australian works premiere every year.



OUR SUPPORTERS

LIFE PATRONS

Those who have made significant contributions to Ensemble.

The Balnaves Foundation
Clitheroe Foundation
Jinnie & Ross Gavin
Ingrid Kaiser
Graham McConnochie
Neilson Foundation
Jenny Reynolds &
Guy Reynolds AO
George & Diana Shirling
Southern Steel Group Pty Ltd

PLATINUM \$20,000+

The Balnaves Foundation
Graham Bradley AM &
Charlene Bradley
Clitheroe Foundation
Ingrid Kaiser
Graham McConnochie
Neilson Foundation
Alicia Powell
Jenny Reynolds &
Guy Reynolds AO
Southern Steel Group Pty Ltd
Christine Thomson

GOLD \$10,000+

Diane Balnaves
Darin Cooper Foundation
Jinnie & Ross Gavin
Steve & Julie Murphy
George & Diana Shirling
John & Diana Smythe
Foundation
Jane Tham & Philip Maxwell

SILVER \$5,000+

David Z Burger Foundation
Friends of Tracey Trinder
Peter Eichhorn & Anne Willems
Alan Gunn
Matilda Hartwell
Emma Hodgman &
John Coorey
Ellimo 2 Family Trust
Anne Elizabeth King
Garry, Debbie & Val
Merryn & Rod Pearse
Alan & Pauline Plumb
David Pumphrey OAM &
Jill Pumphrey
Angus & Elspeth Richards
Lynn Trainor
The Wenkart Foundation
Annie & Graham Williams
Liz Woolfson
Anonymous x 3

BRONZE \$1,000+

Melanie & Michael America
Ellen Borda
Anne Bruning
Wayne Cahill
Alison Carmine
Lynette Casey &
Patricia Zancanaro
Debby Cramer & Bill Caukill
Sue Donnelly
Jayati & Bishnu Dutta
Hon Ben Franklin MLC
Vivienne Golis
Tim & Jill Golledge
Diane Grady &
Christopher Komor
Andrew & Wendy Hamlin
The Hilmer Family Endowment
Fiona Hopkins & Paul Bedbrook
Jacqueline Katz
John Lewis
Peter Lowry AM &
Dr Carolyn Lowry OAM
Michael Markiewicz
Catriona Morgan-Hunn

Barbara Osborne
Georgie Parker
In Memory of John Power
Jim & Maggie Pritchitt
Ronald Sekel
Megan & Tim Sjoquist
Holly Stein
Bob Taffel
Geoffrey Tebbutt
Wendy Trevor Jones
Julia Wokes
Gavin M. Wong
In memory of John &
Vanda Wright
Anonymous x 1

COMMISSIONERS' CIRCLE

Diane Balnaves
Graham Bradley AM &
Charlene Bradley
Paul Clitheroe AM &
Vicki Clitheroe
Jennifer Darin & Dennis Cooper
Ingrid Kaiser
Steve & Julie Murphy
Alicia Powell
Jenny Reynolds &
Guy Reynolds AO
Jane Tham & Philip Maxwell
George & Diana Shirling
Christine Thomson

LEAVE A LEGACY

We would like to thank the following Estates for their generous donations:

Estate of Freddie Bluhm
Estate of Helen Gordon
Estate of Leo Mamontoff
Estates of Zika &
Dimitry Nesteroff
Estate of Margaret Stenhouse

ENCORE CIRCLE

Thank you to the following people for bequests in their wills:

Mark Midwinter
Joe Sbarro
Anonymous x 7



Current at 1 July 2024.

OUR PARTNERS

THANKS TO OUR PARTNERS FOR PLAYING A VITAL ROLE IN OUR SUCCESS.

MAJOR PARTNER



ASSOCIATE PARTNER



STRATEGIC PARTNER



SUPPORTING PARTNERS



ENSEMBLE ED PARTNERS



ENSEMBLE AMBASSADORS

Thanks to our Ambassadors for their continued support.

TODD MCKENNEY

BRIAN MEEGAN

GEORGIE PARKER

KATE RAISON

CONTACT US

ADDRESS

78 McDougall Street
Kirribilli
NSW 2061
ensemble.com.au

BOX OFFICE & ADMINISTRATION

(02) 8918 3400
boxoffice@ensemble.com.au

SUBSCRIPTIONS

(02) 8918 3460
subscriptions@ensemble.com.au

BAYLY'S BISTRO

(02) 8918 3455
baylys@ensemble.com.au

STAY CONNECTED

Join our mailing list at **ensemble.com.au/join-newsletter** to receive our monthly e-newsletter packed with news, reviews and special offers plus a handy pre-show reminder email with details about your upcoming Ensemble visit.



SUBSCRIPTION OFFICE HOURS

Monday to Friday
10am – 5pm

BOX OFFICE HOURS*

Monday – Friday
10am – 5pm

Saturday
12am – 5pm

SUNDAY

Open for ticket collection only:

- 60 minutes prior to matinee performances
- From 5pm for all evening performances

SPECIAL THANKS

A huge thank you to the team who made this brochure possible.

Design

Alphabet Studio

Map Illustrator

Peita Blythe

Videographers

Makker Studio

Photographers

Brett Boardman
Cassandra Hannagan
Prudence Upton
Karen Watson

Stylist

Katie Fitchett

Printer

Special T Print

Hair and Make-up

Lei Tai

*Details in the brochure are correct at the time of publication. Ensemble Theatre reserves the right to add, withdraw or substitute artists and to vary the program and prices. Box Office is closed on public holidays and opening hours are subject to change depending on the performance calendar. Check our website for more info.

ENS
THEATRE
MLE