



# ALONE IT STANDS

BY JOHN BREEN | DIRECTED BY JANINE WATSON

25 JAN – 2 MAR



---

# WELCOME

Welcome to our first play of 2024!

I am very excited that John Breen's wonderful ALONE IT STANDS is now playing in our beautiful intimate space at Ensemble. This is a play I saw in the late 90's and have loved ever since. I was struck by the way each of these characters' lives are so beautifully drawn and created in a few gestures, a physical rendition and a snatched line, which is then coupled with all the high energy and heart fluttering moments of a big sporting clash. This is sport as redemption, healing, drive, and life. Of course, with this energetic cast and creative team, under the perfect guidance of director Janine Watson, we'll relive that memorable event in Irish folklore, grinning from ear to ear – and maybe take away a little magic of the human spirit too.

**MARK KILMURRY**  
ARTISTIC DIRECTOR

---

# WRITER'S NOTE

ALONE IT STANDS takes place in a very different world in 1978. It was a grim time in Ireland.

There was a war in "the North". Contraception, homosexuality, abortion and divorce were all illegal. There was mass unemployment and immigration, a sense that if you wanted any kind of a life you had to get out – England, America, Australia; anywhere would do. It felt like to be Irish was to be cursed. There was no U2, no Riverdance, no Italia 90, no Celtic Tiger: until the Munster rugby team beat the All Blacks in 1978 in Thomond Park and the country went mad with joy. I wrote ALONE IT STANDS to celebrate that victory and celebrate the town I grew up in. It is mostly true. The play started its journey in a small rugby club moving on to small theatres, then big theatres, the West End and even The Sydney Opera House!

The play has given much to me and I am thrilled it will be seen again in Sydney. Ireland has of course changed beyond recognition and we have beaten the All Blacks a few times now (don't mention the World Cup!), but nobody else has beaten them in Thomond Park, in Limerick, on a Tuesday. So Alone it Stands!

**JOHN BREEN**

---

Ensemble Theatre proudly acknowledges the Cammeraiagal people of the Eora nation as customary owners of the land on which we work and share our stories. We pay our respects to Elders past and present.

---

# DIRECTOR'S NOTE

ALONE IT STANDS is the true story of a significant event in Irish sporting history. It is ridiculously physical and very funny. But it is also John Breen's love letter to his town and country. To the people of his nation at a time of lost hope. To the kind of unity and communion amongst humans that is singular to live experience of any kind — sport, concert, theatre. What it demands of the cast is acting as an extreme sport. It is such a physical play. The choreography of the scenes from beginning to end is rigorous and detailed. The actors have to change accents not only scene to scene but within the scenes themselves. And much like the game of rugby itself, the chaos often disguises the technique and detailed analysis that has gone into the work. Never before have I used huge scrapbooks and drawn out the staging for every moment like football game play, so each actor has a solid topography. The most important thing though is that these 6 actors manage to bring truth and heart to even the smallest of characters. They embody and translate the essence of John Breen's play — warmth, irreverence, joy, energy. I have to express personal thanks to my creative collaborators; Linda our dialect coach, Tim our fight director and Chloë our intimacy coordinator for the expertise you all brought in crafting this production. Special thanks to our cultural consultant Tiana Tiakiwai for allowing us to explore the Haka KA MATE and perform it with respect and honour to its origin and history. Thank you to John Eales for such generosity and sage wisdom, for helping me discover the true spirit of the play — and illuminating for me the sportsperson's innate strive for immortality. And thank you to the wonderful John Breen for letting us read and perform your love letter — for me, the only thing truly immortal is love. For these characters it's ultimately love that unites these people. Love that unifies and creates new hope.

A special thank you to Lauren our stage manager who is the best in the biz, and epic thanks to Jess, Matt, Emma, Renata and the entire production team led by Romy.

**JANINE WATSON**

---

# SYNOPSIS

October 31st 1978. Thomond Park, Limerick. Cheers and jeers echo through the crowd as the all-amateur Munster rugby team ready for battle against the best team in the world, the legendary All Blacks. Nobody thought they could go the distance — but the scrappy Irish lads walked off the pitch with a 12-0 victory.

The game was never televised, but the myth of this historic skirmish lives on in John Breen's fast and funny play tackling the stories of those whose lives were touched by the unexpected win. A talented team of performers cheer, scrum and charge through 62 characters, bringing to life both teams, the fans and even animals!

Sports fans and theatre fans alike will love this mad-cap David and Goliath tale about the ultimate underdogs.

## CAST

---

### TRISTAN BLACK

Tony Ward, Munster player  
Russ Thomas, All Black Manager  
John Ashworth, All Black player  
David, posh Cork supporter  
Monica, child  
Jasper, child  
Bunratty singer  
Brendan Foley, Munster player  
Wayne Graham, All Black player  
Dan's Friend 1  
Mark Donaldson, All Black player

### RAY CHONG NEE

Spider, child  
Fox O'Halloran, President of Shannon  
Rugby Club  
Tom Kiernan, Munster coach  
Andy Haden, All Black player  
Graham Mourie, All Black player  
Relative at funeral  
"Locky", Gerry McLoughlin, Munster player  
Dan's Friend 2  
Spectator

### BRIALLEN CLARKE

Mary, Gerry's wife  
Dandy, child  
Moss Keane, Munster player  
Marjorie, posh Cork supporter  
Bunratty singer  
Gary Knight, All Black player  
Top of big NZ fan  
Ball  
Brian McKechnie, All Black player

### SKYLER ELLIS

Lanky, Munster fan  
Donal Canniffe, Munster player  
BBC commentator  
Rodney, posh Cork supporter  
Brad Johnstone, All Black player  
Bunratty singer  
Bryan Williams, All Black player  
Nurse 1  
Eddie Dunn, All Black player

### ALEX KING

Stu Wilson, All Black player  
Ferret, child  
Sinbad, dog  
Bunratty singer  
Pat Whelan, Munster player  
Jim Bowen, Munster player  
All Black fan 1  
Taxi Driver  
Nurse 2  
Bottom of tall NZ fan  
Colm Tucker, Munster player  
Greg Barrett, Munster player  
All Black forward

### ANTHONY TAUFA

Gerry, Munster fan  
Seamus Dennison, Munster player  
Dan Canniffe, Donal Canniffe's father  
BJ Robertson, All Black player  
Bridie Walsh, barmaid  
Irene, posh Cork supporter  
Bunratty singer  
Priest



## CREATIVES

---

Playwright  
**JOHN BREEN**  
Director  
**JANINE WATSON**  
Cultural Consultant  
**TIANA TIAKIWAI**  
Set and Costume Designer  
**EMMA WHITE**  
Lighting Designer  
**MATT COX**  
Composer and Sound Designer  
**JESSICA DUNN**  
Dialect Coach  
**LINDA NICHOLLS-GIDLEY**

Fight Director  
**TIM DASHWOOD**  
Intimacy Coordinator  
**CHLOË DALLIMORE**  
Stage Manager  
**LAUREN TULLOH**  
Costume Supervisor  
**RENATA BESLIK**  
Art Finishing  
**SASHA WISNIOWSKI**

---

RUNNING TIME  
1 HR 40 MINS (WITH INTERVAL)  
**REC. AGES 12+**  
SOME STRONG LANGUAGE,  
ADULT THEMES

---

### SPECIAL THANKS

Kathy Bluff, John Eales, Ben Lightowlers, Sinéad McDevitt  
Bruce Williams at Ambidextrous Projects  
Marketing Consultant Phillipa Spratt

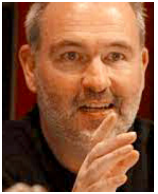
---

Haka KA MATE Composed by Te Rauparaha, Chief of Ngati Toa Rangatira

---

By Arrangement with ORiGiN Theatrical  
On Behalf of Samuel French Ltd, A Concord Theatricals Company

Rehearsal images by PRUDENCE UPTON



**JOHN BREEN**  
PLAYWRIGHT

John Breen is best known as the writer/director of the hit play ALONE IT STANDS which tells the story of Munster's victory over the All Blacks

in 1978. John was awarded the Irish Times/ESB Theatre Award in February 2000 for Best Director for his direction of his own play ALONE IT STANDS. ALONE IT STANDS has been seen all over Ireland, the UK, Australia, United States, France, Malaysia and New Zealand. It is estimated that two hundred and sixty thousand people worldwide have seen the play. He is the General Manager of Loose Change Productions and Magis Theatre and with Loose Change Productions will present EXPORT QUALITY, By Dorotea Mendoza, Erica Miguel and Carolyn Antonio at HERE Arts, directed by Sonoko Kawahara and THE MULBERRY TREE by Hanna Eady and Ed Mast also directed by Alexandra Aron, at La Mama in February 2024.



**JANINE WATSON**  
DIRECTOR

Janine is a director and actor. She graduated from the National Theatre Drama School (Melbourne) and trained with SITI Company (New York) and Zen Zen Zo Physical Theatre. Janine was the 2016 inaugural recipient of the Sandra Bates Director's Award. Her directing credits include: for Ensemble Theatre A BROADCAST COUP, NEARER THE GODS, STILL UNQUALIFIED; for Bell Shakespeare THE COMEDY OF ERRORS, ROMEO AND JULIET; for Red Line Productions at the Old Fitz: FIERCE, CRIMES OF THE HEART, DOLORES (co-director); for the Melbourne Fringe: AGATHA. Recent acting credits include Theatre - A VIEW FROM THE BRIDGE for Ensemble Theatre, THE HAPPY PRINCE at Griffin Theatre, ANTONY AND CLEOPATRA for Bell Shakespeare, ANTIGONE & THREE SISTERS for Sport For Jove, DANGEROUS LIAISONS and DRACULA for Little Ones Theatre. Screen - THE SECRETS SHE KEEPS;

THE CODE; NEIGHBOURS; THAT'S NOT ME. Awards 2019 Sydney Theatre Award for Best Lead Female Performance for THE HAPPY PRINCE. 2017 GLUGS award for Best Supporting Actress for A VIEW FROM THE BRIDGE.



**TIANA TIAKIWAI**  
CULTURAL CONSULTANT

As a servant of the Māori culture, Tiana Marino Tiakiwai has worked within various mediums to engage, empower and provide insights into te ao Māori through Māori Performing Arts. She has tribal affiliations to Tuhoe, Te Rarawa and Tainui. After graduating with a Bachelor of Arts in the Maori Language and Customs at the University of Waikato in 2013, Tiana had relocated to Sydney and has worked amongst various Māori initiatives since. Currently, Tiana teaches Kapa Haka at the Matavai Pacific Cultural Arts Centre and serves as the co-tutor to Sydney based senior Kapa Haka team, Te Raranga Whanui. Additionally, Tiana conducts cultural incursions to local NSW and interstate pre-schools, public schools, and other community forums.



**TRISTAN BLACK**  
CAST

After graduating with qualifications in law and media, Tristan returned to acting in 2018 after an 8-year hiatus. Tristan's recent credits include ONE MAN, TWO GUVNORS for New Theatre, U.B.U: A CAUTIONARY TALE OF CATASTROPHE for KXT Bakehouse, MUCH ADO and FUENTE OVEJUNA! For Flight Path Theatre, WATER for Fringe HQ, and TANT PIS for NZ Fringe Festival. Tristan has done education theatre for the Powerhouse Museum and the Anzac Memorial, and performed character voices for animations, podcasts, and advertising campaigns. Tristan recently trained at the Australian Film, Television and Radio School. He is thrilled to make his Ensemble Theatre debut.



**RAY CHONG NEE**  
CAST

Theatre - THE POISON OF POLYGAMY (STC and La Boite); HAMLET, ANTONY AND CLEOPATRA, THE DREAM, OTHELLO, ACTORS AT WORK: THE PLAYERS (Bell Shakespeare); I CALL MY BROTHERS (MTC); EMERALD CITY AND NOISES OFF (QT and MTC); THE TEMPEST (Sport For Jove); HYDRA (QT and STCSA); THE MOTION OF LIGHT IN WATER (Elbow Room/La Boite/ HotHouse/ Theatre Works) BARE WITNESS (Performing Lines); ANGELS IN AMERICA (Theatre Ink/ Parramatta Riverside), and ANDY X (N.I.D.A). Film - SWIMMING FOR GOLD; AMALIA LUCIA GOMEZ IS GLUTEN INTOLERANT; THE BENCH; THE POOL. TV - Year of (STAN); HOME AND AWAY; PULSE; TOMORROW WHEN THE WAR BEGAN; GLITCH; PARTY TRICKS; OFFSPRING; DANCE ACADEMY.



**BRIALLEN CLARKE**  
CAST

Briallen is an acting graduate of the National Institute of Dramatic Art. Television credits include IRREVERENT (Peacock/Matchbox Pictures) THE HEIGHTS (ABC), DOCTOR DOCTOR (Nine Network), AUSTRALIA'S SEXIEST TRADIE (7Mate) and ABC's FRESHBLOOD - developing young comedic talent in Australia. On stage Briallen most recently received critical acclaim in the one woman play PONY (Griffin Theatre Company). Other credits include: THE PLANT and CLYBOURNE PARK (Ensemble Theatre); HAY FEVER, MURIELS'S WEDDING THE MUSICAL (Sydney Theatre Company); A STRATEGIC PLAN and HOLLYWOOD ENDING (Griffin Theatre Company); Dreamsong (Melbourne Arts Centre); ALL MY SONS, THE YOUNG TYCOONS and THE LUNCH HOUR (Darlinghurst Theatre Company); PORK STILETTO (Old Fitz Theatre).



**SKYLER ELLIS**  
CAST

Skyler graduated from NIDA (Acting) in 2014. Since graduating he has enjoyed performing across a wide variety of productions, most recently including Bell Shakespeare's national tour of THE COMEDY OF ERRORS, as well as THE GRUFFALO and THE GRUFFALO'S CHILD for CDP. Other theatre includes THE MAIDS (Belvoir 25a/ Glitterbomb), YOUTH & DESTINATION (KXT), ROOM ON THE BROOM, (CDP), as well SPACE CATS and VAMPIRE LESBIANS OF SODOM (Brevity Theatre; Melbourne Fringe), NEIGHBOURHOOD WATCH (Illuminate Educate) and BU21 (Outhouse Theatre).



**ALEX KING**  
CAST

Alex King (She/Her); is a Sydney-based Actor and graduate of Sydney Actors School (AD). Recent credits for the stage include Paris in ROMEO AND JULIET and Duke in THE COMEDY OF ERRORS both for Bell Shakespeare Company, Noa in A BROADCAST COUP for Ensemble Theatre, Sister in HAIRWORM for Old 505. As well as a number of short films, Alex's screen credits include MASK OF THE EVIL APPARITION (Alex Proyas) and THE LONGEST WEEKEND (Molly Haddon).



**ANTHONY TAUFU**  
CAST

Anthony has recently been seen in series 2 of WOLF LIKE ME on Stan. In 2023 he toured parts of America with Windmill Production's HICCUP,

returning home to Griffin Theatre to co-star in the critically acclaimed JAILBABY which returns to the stage in January, 2024. In 2022 he appeared in THE TENANT OF WILDFELL HALL for STC, and A CHRISTMAS CAROL for Ensemble Theatre. Anthony appeared in HOME, I'M DARLING, HOW TO RULE THE WORLD and the tour of BLACK IS THE NEW WHITE for Sydney Theatre Company. He also was part of the productions of A CHEERY SOUL, SAINT JOAN, CLOUD NINE for Sydney Theatre Company and AN OCTOROON and the re-mount of BLACK IS THE NEW WHITE for Queensland Theatre and THE MERCHANT OF VENICE for Bell Shakespeare.



**EMMA WHITE**  
SET & COSTUME DESIGNER

Emma White is a set and costume designer for stage and screen. Emma is a graduate of NIDA's Master of Fine Art Design course and has a Bachelor of Fine Art in Sculpture from UNSW Art and Design. In 2019 Emma was nominated for an APDG Award for Best

Emerging Designer. For theatre, Emma's selected design credits include: AS YOU LIKE IT (Queensland Theatre); OIL, LIFESPAN OF A FACT (Sydney Theatre Company); THE DISMISSAL co-design (Squabbalagic); THE DEB (ATYP); GODSPELL (Hayes Theatre Co); GREEN PARK, A IS FOR APPLE (Griffin Theatre); A STREETCAR NAMED DESIRE, HAND TO GOD co-designer, SEVEN DEADLY SINS + MAHAGONNY SONGSPIEL, CHORUS (Red Line Productions)



**MATT COX**  
LIGHTING DESIGNER

Since arriving in Sydney in 2003, Matt has designed numerous theatre productions including Bangarra Dance Theatre: WARU JOURNEY

OF THE SMALL TURTLE, DUBBOO, ONE'S COUNTRY, OUR LAND PEOPLE STORIES, BLAK, BELONG. for Ensemble Theatre: SUMMER OF HAROLD, BENEFACTORS, A CHRISTMAS CAROL, BOXING DAY BBQ, A VIEW FROM THE BRIDGE, A BROADCAST COUP, THE CARETAKER, NEARER THE GODS, DIPLOMACY, MURDER ON THE WIRELESS. Bell Shakespeare: THE MISER, HAMLET, ROMEO AND JULIET. Monkey Baa: EDWARD THE EMU, POSSUM MAGIC, THE UNKNOWN SOLDIER, DIARY OF A WOMBAT. STC: WHARF REVUE 2020, 2019, 2018, and RUBY MOON.



**JESSICA DUNN**  
COMPOSER & SOUND DESIGNER

Jessica is a composer, sound designer, and performing musician. Recent theatre credits include: as sound

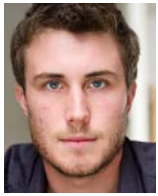
designer for ON THE BEACH (Sydney Theatre Company); as composer for BEETLE, THE LOVERS (Legs on the Wall); as composer and sound designer for CAMP (Siren Theatre Co.), CHALKFACE (STC/ State Theatre SA), IS THERE SOMETHING WRONG WITH THAT LADY?, PHOTOGRAPH 51 (Ensemble Theatre) BLAQUE SHOWGIRLS, A IS FOR APPLE (Griffin), TRESTLE (Legs on the Wall), and THE MARES (Tasmanian Theatre Company); as sound programmer for JULIUS CAESAR, THE TEMPEST (STC); as associate sound designer for WONNANGATTA (Sydney Theatre Company), RANDOM (Belvoir) and COUNTING AND CRACKING (Belvoir); as Composer's Assistant for HARP IN THE SOUTH PARTS I & II (STC); as Performing Musical Director for the 2017 and 2019 seasons of BARBARA AND THE CAMP DOGS (Belvoir); as bassist for SIX THE MUSICAL (LWA).



**DIALECT COACH**  
LINDA NICHOLLS-GIDLEY

Linda is a well-respected Sydney based accent and dialect coach, sought after both nationally and internationally. Theatre

coaching includes THE MEMORY OF WATER, SUMMER OF HAROLD, FADE, TINA - THE MUSICAL, MISS SAIGON, MURDER FOR 2, BENEFACTORS, CONSENT, CLYDE'S, SUDDENLY LAST SUMMER, THE ROCKY HORROR SHOW, BEAUTIFUL - THE MUSICAL, BREAKING THE CASTLE, CINDERELLA, 9 TO 5, LET THE RIGHT ONE IN, THE CARETAKER, SLOW BOAT, PHOTOGRAPH 51, JEKYLL AND HYDE, AN AMERICAN IN PARIS, JAGGED LITTLE PILL, GIRL FROM THE NORTH COUNTRY, A CHORUS LINE, HEROES OF THE FOURTH TURNING, BLACK COCKATOO, COUNTING AND CRACKING, HOW TO TRAIN YOUR DRAGON, SHREK, SATURDAY NIGHT FEVER, THE BODYGUARD, and DIRTY DANCING. Film and Television includes WE WILL NEVER DIE, SHANTARAM, WELLMANIA, YEAR OF, GORGO, MARY: THE MAKING OF A PRINCESS, THE CHASE AUSTRALIA, and JUNGLE. Linda discusses accents on her podcast SAY YOU SAY ME.



**TIM DASHWOOD**  
FIGHT DIRECTOR

Tim has studied extensively in a range of martial disciplines and movement practices in Australia, Canada and the United States and is the

President of the Society of Australian Fight Directors incorporated (SAFDi). Debuting as a Fight Director for The Ensemble, he has worked with numerous companies across Australia. Recent notable credits include: MISS SAIGON (Opera Australia), THE SEAGULL, THE IMPORTANCE OF BEING EARNEST, NO PAY? NO WAY!, JULIUS CAESAR (Sydney Theatre Company), BELL PLAYERS (Bell Shakespeare), TELL ME I'M HERE, FANGIRLS, OPENING NIGHT (Belvoir), FOURTEEN, JANE EYRE (shake & stir), GENTLEMEN PREFER BLONDES, DUBBO CHAMPIONSHIP WRESTLING (Hayes) and ULSTER AMERICAN (Outhouse). Tim teaches stage combat and movement disciplines at Sydney Actors School, Actors Centre Australia, University of Wollongong and NIDA.



**CHLOË DALLIMORE**  
INTIMACY COORDINATOR

Chloë is an internationally trained and accredited Intimacy Coordinator. In 2023, Chloë's screen and stage credits include Netflix's

HEARTBREAK HIGH, Opera Australia's MISS SAIGON, Sydney Theatre Company's THE SEAGULL as well as multiple productions with Belvoir St Theatre, XRoadsLive, Netflix, Warner Bros, Disney Studios, Stan and Paramount Plus. As an award-winning musical theatre performer and professional dancer, Chloë's career has seen her work as an Associate Choreographer on main-stage productions, as well as perform lead roles in productions such as THE PRODUCERS, CHICAGO, THOROUGHLY MODERN MILLIE, and THE ADDAMS FAMILY.



**LAUREN TULLOH**  
STAGE MANAGER

Lauren is Ensemble's Resident Stage Manager and a NIDA graduate. For Ensemble Theatre: THE MEMORY OF WATER, MR

BAILEY'S MINDER, CLYDE'S, A BROADCAST COUP, THE CARETAKER, THE ONE, A LETTER FOR MOLLY, KILLING KATIE, THE WOMAN IN BLACK, THE APPLETON LADIES' POTATO RACE (2021 regional tour), OUTDATED, THE LAST WIFE, THE LAST FIVE YEARS, MARJORIE PRIME, THE PLANT and BETRAYAL. For National Theatre of Parramatta: QUEEN FATIMA, THE THINGS I COULD NEVER TELL STEVEN and JESUS WANTS ME FOR A SUNBEAM (Belvoir season). For the Hayes Theatre Company: REWIRED: MUSICALS REIMAGINED, AMERICAN PSYCHO, HIGH FIDELITY, ASSASSINS, THE FANTASTICKS, VIOLET and CALAMITY JANE which toured to the Comedy Theatre Melbourne, Belvoir & regional areas.



**RENATA BESLIK**  
COSTUME SUPERVISOR

Renata graduated from NIDA in 2007 with a Bachelor of Dramatic Arts in Costume Production. She has supervised costumes

for thirty shows at Ensemble Theatre with the most recent being THE MEMORY OF WATER. Other supervising credits includes DARKNESS (New Theatricals), FANGIRLS (Belvoir St), BETTY BLOKK-BUSTER RE-IMAGINED (Sydney Festival), HAMLET, HENRY V, THE WINTER'S TALE, MACBETH (Bell Shakespeare), THE GOVERNMENT INSPECTOR, STAY HAPPY KEEP SMILING, THE TEMPEST, WOYCECK, A LIE OF THE MIND, PORT, THE THREESOME (NIDA) as well as thirteen operas for Pinchgut Opera most recently being RINALDO. Renata is also an accomplished costume maker and milliner.





# SUPPORT US



Every dollar counts. Ensemble relies on self-earned income to deliver all the programs that we do – commissioning new work, education outreach, producing world premieres, so please think about your capacity to make a gift to Ensemble. You can donate online at [ensemble.com.au/support-us](https://ensemble.com.au/support-us) or contact **Stephen Attfield**, Philanthropy & Partnerships Manager, on [stephena@ensemble.com.au](mailto:stephena@ensemble.com.au) or via **02 8918 3400**.

## LIFE PATRONS

Those who have made significant contributions to Ensemble.

The Balnaves Foundation  
Clitheroe Foundation  
Jinnie & Ross Gavin  
Ingrid Kaiser  
Graham McConnochie  
Neilson Foundation  
Jenny Reynolds & Guy Reynolds AO  
George & Diana Shirling

## PLATINUM \$20,000+

The Balnaves Foundation  
Clitheroe Foundation  
Graham McConnochie  
Neilson Foundation  
Ingrid Kaiser  
Jenny Reynolds & Guy Reynolds AO  
Southern Steel Group Pty Ltd

## GOLD \$10,000+

Diane Balnaves  
Graham Bradley AM & Charlene Bradley  
Darin Cooper Foundation  
Jinnie & Ross Gavin  
Steve & Julie Murphy  
Alicia Powell  
George & Diana Shirling  
John & Diana Smythe Foundation  
Jane Tham & Philip Maxwell

## SILVER \$5,000+

David Z Burger Foundation  
Peter Eichhorn & Anne Willems  
James Family Charitable Foundation  
Binu & Elsa Katari  
Mark Kilmurry & Jacqui Taffel  
Peter & Marion Lean  
Merryn & Rod Pearse  
Christine Thomson  
Friends of Tracey Trinder  
Val, Garry & Debbie  
Annie & Graham Williams  
Anonymous

## BRONZE \$1,000+

Michael Adena & Joanne Daly  
Melanie & Michael America  
Phil Breaden  
Margaret Cassidy  
Debby Cramer & Bill Caukill  
Jayati & Bishnu Dutta  
APS Foundation - Brent & Vicki  
Emmett Giving Fund  
R J Furley  
Jill & Tim Golledge  
Alan Gunn  
Andrew & Wendy Hamlin  
Matilda Hartwell  
The Hilmer Family Endowment  
Fiona Hopkins & Paul Bedbrook  
Michael Markiewicz  
Barbara Osborne  
Georgie Parker  
Jim & Maggie Pritchitt  
Ronald Sekel  
Bob Taffel  
Wendy Trevor-Jones  
Dr Elizabeth A Watson  
Gavin M. Wong  
In memory of John & Vanda Wright  
Anonymous x 2

## COMMISSIONERS' CIRCLE

A group of like-minded Ensemble supporters who are passionate about storytelling and supporting artists to create new work for our stage.

Diane Balnaves  
Graham Bradley AM & Charlene Bradley  
Paul Clitheroe AM & Vicki Clitheroe  
Jennifer Darin & Dennis Cooper  
Ingrid Kaiser  
Steve & Julie Murphy  
Alicia Powell  
Jenny Reynolds & Guy Reynolds AO  
George & Diana Shirling  
Jane Tham & Philip Maxwell

## LEAVE A LEGACY

We would like to thank the following Estates for their generous donations:

Estate of Freddie Bluhm  
Estate of Helen Gordon  
Estate of Leo Mamontoff  
Estates of Zika & Dimitry Nesteroff  
Estate of Margaret Stenhouse

## ENCORE CIRCLE

Thank you to the following people for bequests in their wills:

Mark Midwinter  
Joe Sbarro  
Anonymous x 7



Ensemble Theatre supporters are recognised for 12 months from the dates of donation. Current at 8 January 2024.

# COMMISSIONERS' CIRCLE

IN RECENT YEARS UNDER THE ARTISTIC DIRECTORSHIP OF MARK KILMURRY, ENSEMBLE HAS CHAMPIONED ESTABLISHED, NEW AND EMERGING TALENT WITH A FOCUS ON DEVELOPING PLAYWRIGHTS WHO REFLECT CONTEMPORARY SOCIETY ON THE STAGE.

Since 2016, Ensemble has commissioned 14 new Australian plays and premiered 16, with another 5 new productions to premiere by the end of 2023. We've commissioned playwrights such as Joanna Murray-Smith, Steve Rodgers, Hilary Bell, Melanie Tait, Geoffrey Atherden and Vanessa Bates to name but a few.

The Commissioners' Circle comprises a group of likeminded Ensemble supporters who are passionate about storytelling and supporting artists to create new work for our stage.

What does it take to be involved? A belief and passion for new Australian plays. To join this community, please contact **Stephen Attfield**, Philanthropy & Partnerships Manager, on **02 8918 3400** or email [stephena@ensemble.com.au](mailto:stephena@ensemble.com.au)



WORLD PREMIERE

## DAVID WILLIAMSON'S THE GREAT DIVIDE

DIRECTED BY MARK KILMURRY

8 MAR – 27 APR

## OUR PARTNERS

Thank you to our partners for playing a vital role in our success.

### MAJOR PARTNER



### ASSOCIATE PARTNER



### STRATEGIC PARTNERS



### SUPPORTING PARTNERS



### ENSEMBLE ED PARTNERS



## ENSEMBLE THEATRE TEAM

Artistic Director **Mark Kilmurry**  
 Executive Director **Loretta Busby**  
 Chief Financial Officer **David Balfour Wright J.P.**  
 Senior Producer **Carly Pickard**  
 Associate Producer **Anna Williamson**  
 Literary Manager **Sarah Odillo Maher**  
 Casting & Events (Part-time) **Merran Regan**  
 Production Manager **Romy McKanna**  
 Deputy Production Manager **Paisley Williams**  
 Acting Technical Coordinator **Gints Karklins**  
 Resident Stage Manager **Lauren Tulloh**  
 Philanthropy & Partnerships Manager **Stephen Attfield**  
 Marketing Manager **Rachael McDonnell**  
 Deputy Marketing Manager **Charlotte Burgess**  
 Marketing Assistant **Emma Garden**  
 Junior Marketing Assistant **Osibi Akerejola**  
 In-house Designer **Cheryl Ward**  
 Media Relations **Kabuku PR**  
 Ticketing Services Manager **Spiros Hristias**  
 Ticketing & Office Coordinator **Sophia Egarhos**  
 Box Office Team **Osibi Akerejola, Mary Barakate, Angus Evans, Alishia Keane, Lauren Richardson & Kathryn Siel**

Accounts **Gita Sugiyanto**  
 Front of House Manager **Jim Birch**  
 Front of House Supervisors **Megan Cribb & Isabella Wellstead**  
 Head Chef **Ian Paul Aguilar Alarcon**  
 Restaurant Manager **Amy Mitchell**  
 Maintenance Coordinator **Paul Craig**

### ENSEMBLE LIMITED BOARD

Chair **Graham Bradley AM, John Bayley, Narelle Beattie, Mark Kilmurry, Anne-Marie McGinty, James Sherrard**

### ENSEMBLE FOUNDATION BOARD

Chair **Paul Clitheroe AM, Diane Balnaves, Graham Bradley AM, Alison Cameron, Joanne Cunningham, Ross Gavin, Emma Hodgman, Mark Kilmurry, Margo Weston**

### ENSEMBLE AMBASSADORS

**Todd McKenney, Brian Meegan, Georgie Parker, Kate Raison**





# BAY LY'S BISTRO

Downstairs at Ensemble,  
experience spectacular  
harbour views with  
delicious food and wine.



## CONNECT WITH US

Join our mailing list at [ensemble.com.au](http://ensemble.com.au) to receive the latest news.



@ensemblsydney



@ensembletheatre



@ensemblsydney



EnsembleTV

(02) 8918 3400  
[ensemble.com.au](http://ensemble.com.au)  
78 McDougall St, Kirribilli

The management reserves the right to make any alteration to cast which may be rendered necessary by illness or any other unavoidable cause. Patrons are reminded that out of consideration for others, latecomers cannot be admitted until a suitable place in the performance.