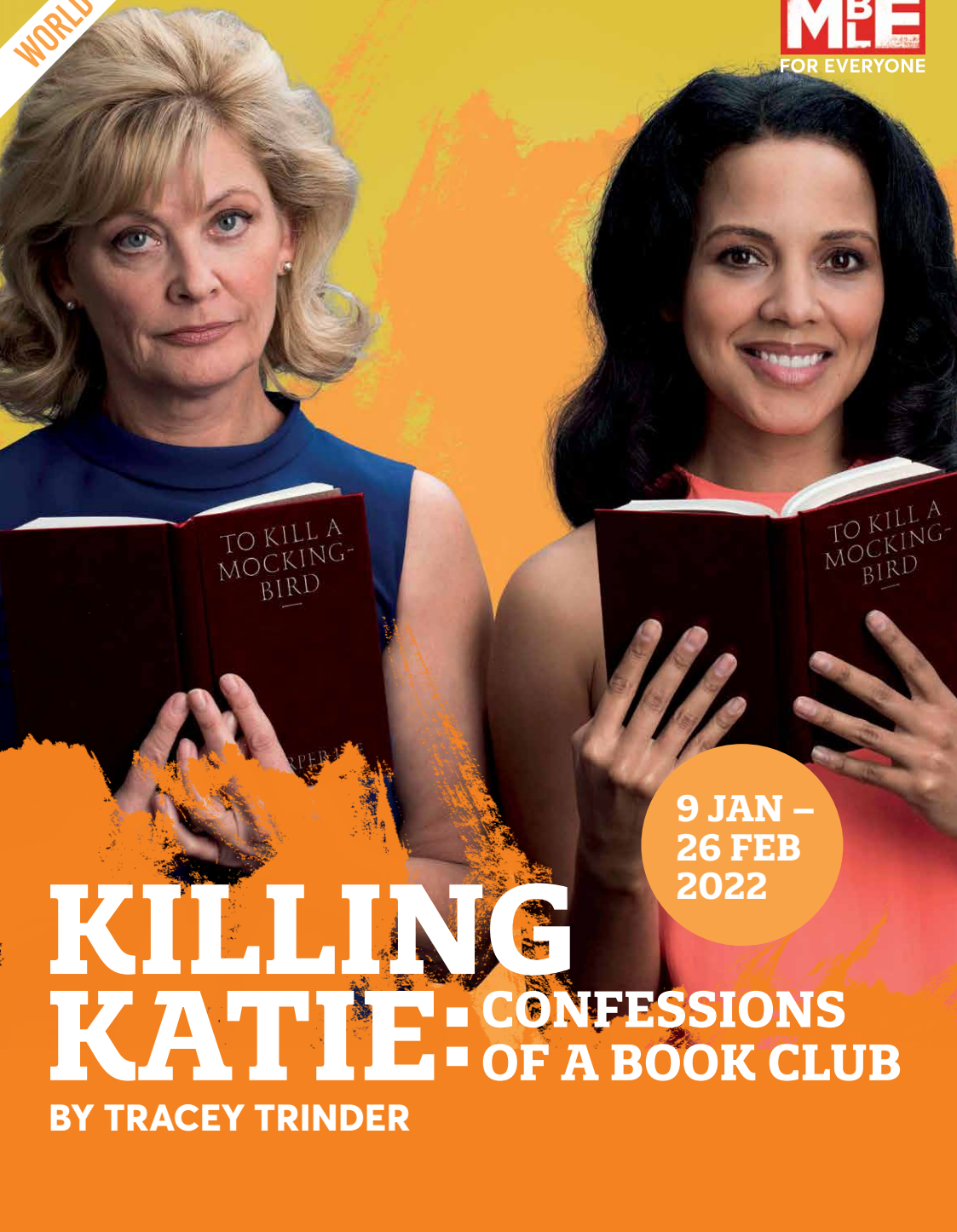


WORLD PREMIERE

ENS
THEATRE
MBE
FOR EVERYONE



9 JAN –
26 FEB
2022

KILLING KATIE: CONFESSIONS OF A BOOK CLUB

BY TRACEY TRINDER

WELCOME



KILLING KATIE: CONFESSIONS OF A BOOK CLUB has had a long journey interrupted more than once by world events. The great news is it is here, live in the theatre with a terrific cast, a wonderful director, great designers and a play by the clever and talented Tracey Trinder. The world of book clubs, long suffering friendships and competitive relationships pepper our lives and Tracey has created a warm but fierce comedy out of her observations from life. It is a fitting tribute to her and her unique voice.

Mark Kilmurry Artistic Director

DIRECTOR'S NOTE

When I was in primary school, I was jealous that my best friend was making a new best friend in the school drama club. Despite certainty that my career destiny was in painting, I joined drama club to rescue my bestie from the evil clutches of this other girl. I'm fascinated by the lengths we go to for our friends, but also our possessiveness of them. From the school yard to our adult lives, we are familiar with the challenges and confrontations that can arise when a seemingly solid friendship boat is rocked. What happens when a group that has been together for years is disrupted by a newcomer?

....And what if that newcomer brings an honesty that highlights our own dishonesty to ourselves? It could provide an opportunity to grow and learn... but we have to be willing to take that step.

The journey of bringing **KILLING KATIE** to the stage with this cast of extraordinarily talented and very funny women began back in 2019. Despite the trials of the past couple of years, we are still together as a group and still finding laughter in the face of adversity. We hope to honour Tracey's legacy and hear the echoes of her infectious laughter around the theatre.

Francesca Savage Director



Ensemble Theatre proudly acknowledges the Cammeragal people of the Eora nation as customary owners of the land on which we work and share our stories. We pay our respects to Elders past and present.

TRACEY TRINDER PLAYWRIGHT'S AWARD

ENSEMBLE THEATRE IS PLEASED TO ANNOUNCE THE INAUGURAL
TRACEY TRINDER PLAYWRIGHT'S AWARD.

The award is for an outstanding unproduced comedy or comedy drama written by a woman playwright including a trans and/or gender-diverse playwright.

The Tracey Trinder Playwright's Award encourages women writers with a focus on comedy. Tracey was a stage and screenwriter and had a unique voice in the world of comedy. This award honours her name and her commitment to women's writing.

To honour Tracey's memory, you can donate towards the award. All donations over \$2 are

tax deductible and will go directly towards developing a new Australian comedy by a woman playwright. For more information, please visit ensemble.com.au/support-us or contact our Philanthropy & Partnerships Manager Stephen Attfield on **02 8918 3400** or stephena@ensemble.com.au

The award consists of a \$7,500 cash prize, a development workshop, and a full production as part of Ensemble Theatre's annual season. Details of the award, submission guidelines and entry dates will be available on our website from February 2022.

SYNOPSIS

Everyone has a nemesis. And for Robyn, Queen Bee of her long-running book club, that nemesis comes in the form of free-spirited and luminous Katie. When Katie is invited to join the group, Robyn's once steady kingdom is rocked by Katie's exuberance and carefree honesty.

Katie is next-level annoying and Robyn swiftly sets about enacting a plan to eject her from her precious book club, with shocking and unexpected consequences. Laugh-out-loud funny and brutally honest, KILLING KATIE re-opens the book on female alliances, guilt and the mysterious forces that can either make or break a friendship group.

CAST

ANGELA WINTERS **VALERIE BADER**
KATIE KLINE **CHANTELLE JAMIESON**
LINDA CHAMBERS **BRON LIM**
ROBYN WINTERS **KATE RAISON**
SAM ANDREWS **GEORGINA SYMES**

CREATIVES

FRANCESCA SAVIGE **DIRECTOR**
WARWICK DODDRELL **ASSISTANT DIRECTOR**
JANE FITZGERALD **DRAMATURG**
TOBHIAH STONE FELLER **SET &
COSTUME DESIGNER**
KELSEY LEE **LIGHTING DESIGNER**

DARYL WALLIS **COMPOSER & SOUND DESIGNER**
LAUREN TULLOH **STAGE MANAGER**
ERIN SHAW **ASSISTANT STAGE MANAGER**
RENATA BESLIK **COSTUME SUPERVISOR**
SCOTT WITT **MOVEMENT CONSULTANT**
KRYSTELLE QUARTERMAIN **STAGE MANAGEMENT
SECONDMENT**
KALUM MCMURRAY **PRODUCTION SECONDMENT**

RUNNING TIME 90 MINS NO INTERVAL

SPECIAL THANKS

Above All Rigging, Jean Meneau, Pier Productions,
Damien Ryan & Sport for Jove Theatre Company.

Rehearsal images by Prudence Upton



TRACEY TRINDER PLAYWRIGHT

Tracey Trinder had a long career as television scriptwriter and story editor. She worked for all the major Australian networks and

many production houses including Southern Star, Millennium Pictures, Screen time and Columbia Tristar. She was a talented writer, story editor, script consultant and script editor and her credits include HOME AND AWAY, OUT OF THE BLUE, MCLEOD'S DAUGHTERS, MDA, ALWAYS GREENER, ALL SAINTS and MIRROR MIRROR. In the last few years, she collaborated on a television project that was shortlisted from 500 entries in the Australian Writer's Guild Showtime 2017 Competition. Her play, KILLING KATIE: CONFESSIONS OF A BOOK CLUB, was her first foray into live theatre, a new genre that she had hoped to continue. She was known for her ability to create and develop authentic characters, with warmth and humour.



FRANCESCA SAVIGE DIRECTOR

Francesca holds degrees in Theatre and Acting from QUT and furthered her training in Shakespeare at RADA, Shakespeare's Globe

(UK) and Shakespeare & Company (US). Francesca has pursued directing and arts education alongside her acting career since graduating. As an actor Frankie has worked across Australia and overseas for Sport for Jove, International Actors Ensemble, Auckland Summer Shakespeare, Bell Shakespeare, Queensland Theatre Company, Critical Stages, Griffin, Parramatta Riverside and Old Fitz, as well as making screen appearances in MARLEY, SOMEONE; THE BEEHIVE (Tribeca Short Film Festival); STARTING FROM NOW, HOME AND AWAY, PACKED TO THE RAFTERS and VENUS & ADONIS. Francesca's directing experience includes Sport for Jove's mainstage and summer seasons, as well coordinating and directing for the Second Age Project since its inception in 2012. She has also directed for Ensemble Theatre, Bell Shakespeare and renowned drama schools QUT and ACA. Francesca has over 15 years' experience as a Drama and Acting teacher, working throughout Australia and internationally with individuals and within school and university institutions. Francesca received a 2010 Churchill Fellowship to direct and teach Shakespeare in South Africa, a 2015 Globe International Actor's Fellowship to train in London, UK and in 2017 was a recipient of the Sandra Bates Director's Award at Ensemble Theatre to work with the company throughout the year. Francesca is a proud member of MEAA.







WARWICK DODDRELL
ASSISTANT DIRECTOR

Warwick Doddrell is an award-winning director. He has worked with companies such as Opera Australia, National Theatre of Parramatta,

Central Coast Opera, Green Door Theatre Co, New Theatre, and the Kings Cross Theatre. Recently he directed the Australian Premiere of ZOMBIE THOUGHTS for the National Theatre of Parramatta, IF WE GOT SOME MORE COCAINE I COULD SHOW YOU HOW I LOVE YOU for Green Door Theatre Co. and STUPID F*CKING BIRD at the New Theatre. Warwick interned with the Michael Cassel Group for BEAUTIFUL: THE CAROLE KING MUSICAL and has workshopped a new musical of DOT AND THE KANGAROO with VCA. He was a recipient of the Sandra Bates Directing Award in 2020.



JANE FITZGERALD
DRAMATURG

Jane is Resident Dramaturg at Australian Theatre for Young People (ATYP) and was previously Literary Manager at Ensemble (shared role).

Recent productions as Dramaturg include BLACK COCKATOO, FULLY COMMITTED and THE APPLETON LADIES' POTATO RACE for Ensemble, THE BIG DRY for Ensemble/ATYP, LIGHTS IN THE PARK, CUSP, APRIL AARDVARK, BATHORY BEGINS and INTERSECTION: ARRIVAL for ATYP, LOST BOYS for Merrigong and Mrock for ATYP/STC. For STC she has been Literary Manager, Artistic Associate and administrator of the Patrick White Playwrights' Award as well as a dramaturg on new writers' programs and on mainstage productions. She has worked as a script reader for the Royal Court, London and worked for 15 years as a mentor with Year 12 students on HSC creative writing projects.



VALERIE BADER
ANGELA WINTERS

Valerie's extensive career encompasses theatre, film and television. Recent feature film appearances include: WISH YOU WERE HERE, BLACK

& WHITE & SEX and RIP TIDE. Valerie last appeared for Ensemble in THE APPLETON LADIES' POTATO RACE, and she toured Australia in the play during 2021. Valerie has worked for just about every main stage theatre company: STC, MTC, Bell Shakespeare, Belvoir, Griffin, Playbox, and Nimrod, garnering Helpmann, Sydney Critics' and Glug award nominations. Recent theatre: JESUS WANTS ME FOR A SUNBEAM for Riverside, FUNNY GIRL IN CONCERT for SSO, THOMAS MURRAY AND THE UPSIDE DOWN RIVER for Critical Stages, TALK, CHILDREN OF THE SUN for STC, M ROCK for STC/ATYP, AUSTRALIA DAY for MTC, THE FLOATING WORLD for Griffin. Television includes: BUMP, DEVIL'S PLAYGROUND, DEAD LUCKY, THE LET DOWN, THE CHUCK IN, ALL SAINTS and EAST OF EVERYTHING. Valerie is a proud member of MEAA.



CHANTELLE JAMIESON
KATIE KLINE

A WAAPA graduate, Chantelle Jamieson has enjoyed a flourishing career across film, theatre and television. Chantelle was most recently seen in the

Sydney Theatre Company production of HOME I'M DARLING at the Sydney Opera House. Previous theatre credits include STILL POINT TURNING for STC, GIRL IN THE MACHINE for NToP, FIERCE, LOOK BACK IN ANGER for Redline and WIT for Clock and Spiel. In 2021 she appeared in the US feature PETER RABBIT 2, as well as Aussie drama JUNE AGAIN. On the small screen, Chantelle joined the fifth season of Nine Network's DOCTOR DOCTOR as new series regular 'Sharna'. Other television credits include FRAYED, CROWNIES and DIARY OF AN UBER DRIVER for the ABC and HOUSE HUSBANDS for the Nine Network. Chantelle is a proud member of MEAA.

**BRON LIM**

LINDA CHAMBERS

Recent performance credits include Sport for Jove's ROMEO AND JULIET, ROSE RIOT, and RIVER AT THE END OF THE ROAD. Other Australian credits

include Company B's SYDNEY ASIAN THEATRE FESTIVALS with Q Theatre's DEAD CITY, and TECK TAN and David Szu's BLACK EYES. SADAKO and the 1000 PAPER CRANES for Bell Shakespeare, 2 CHAIRS for bAKEHOUSE. UK credits include ROMEO AND JULIET for Mu-Lan/Haymarket, LEAR'S DAUGHTERS and 58 FOR YELLOW EARTH, LADY OF THE DROWNED FOR STONE CRABS, THE GOOD WOMAN OF SICHUAN for Leicester Haymarket, MEDEA and NOTHING LEFT TO LOSE for Company:Collisions. Audio books and radio dramas for BBC Radio and BBC Commonwealth. Bron also appeared in the Stan series THE OTHER GUY 2. Bron is a proud member of MEAA.

**KATE RAISON**

ROBYN WINTERS

Kate's theatre credits include TWO, THE GOOD DOCTOR, nominated for Most Outstanding Mainstage Production at the GLUG

Awards, DARK VOYAGER, THE GINGERBREAD LADY, AT ANY COST, NINETY, LET THE SUNSHINE, MARY STUART, STELLA BY STARLIGHT, CHARITABLE INTENT, CHAPTER TWO, BIRTHRIGHTS, AFTER THE BALL, ALARMS AND EXCURSIONS, WRONG FOR EACH OTHER, ROAD, A SHAYNA MAIDEL, MAN OF THE MOMENT, THE ADMAN, and THE HEIDI CHRONICLES for Ensemble Theatre; THE GIRL'S GOTTA EAT for The Hole in the Wall Theatre, Perth; DAYLIGHT SAVING for Harvest Theatre Co South Australia; and TORCH SONG TRILOGY for Darlinghurst Theatre. Her television credits include ongoing roles in NEIGHBOURS, A COUNTRY PRACTICE, E-STREET, PACIFIC DRIVE and OUTRIDERS. She has also appeared in MURDER CALL, HOME AND AWAY, ALL SAINTS, HEAD START, F.A.R.S.C.A.P.E, and WONDERLAND. Her

film roles include GOING SANE, EBB TIDE, ENCOUNTERS, SUPERFIRE and CHECKPOINT which won Best International Short at the Cleveland International Film Festival and was nominated for Best Fiction at the Dendy Short Film Awards. Kate is a proud member of MEAA.

**GEORGINA SYMES**

SAM ANDREWS

After graduating from the Actors Centre in 2000 Georgina was Queensland Theatre's artist in residence performing in AWAY, THE

IMPORTANCE OF BEING EARNEST, THE FEMALE OF THE SPECIES, RUBY MOON and BECKETT X 3. Other theatre includes GLORIA at Seymour Centre, STILL POINT TURNING: THE CATHERINE MCGREGOR STORY for STC, DEATHTRAP and EVERY SECOND for Darlinghurst Theatre, SUNSET STRIP, PORN CAKE, CRESTFALL and AWAY for Griffin, THE DANCE OF JEREMIAH for La Boite, THE ALCHEMIST for QTC/Bell and her award winning solo work UTA UBER KOOL JA. Feature films include, BABYTEETH, winner Best Film, 2020 AACTA Awards, RIP TIDE and BAD BEHAVIOUR. TV includes FRAYED Series 1 & 2, WHAM BAM THANK YOU MA'AM, THE ELEGANT GENTLEMAN'S GUIDE TO KNIFE FIGHTING, RAKE and BANANAS IN PYJAMAS. Georgina is a proud member of MEAA.

**TOBHIYAH STONE FELLER**

SET & COSTUME DESIGNER

Tobhiyah is a designer dedicated to live performance, interior, and installation projects. Set & Costume Design credits include: Bell

Shakespeare Education: MACBETH; Blacktown Arts Centre: MY NAME IS SUD; Clockfire Theatre Co./Sydney Festival: NIGHT PARADE OF ONE HUNDRED GOBLINS; Ensemble: BLUE/ORANGE, CLYBOURNE PARK, e-baby, GOOD PEOPLE, SORTING OUT RACHEL, and MY ZINC BED/BLOOD BANK for which the set design won the Installation Design Category – Australian Interior Design Awards 2016; Griffin: REPLAY, SPLINTER, and WICKED



SISTERS; Musica Viva: DA VINCI'S APPRENTICE; Performing Lines: GODDESS, and VARIANT; Riverside Theatre: PARRAMATTA GIRLS. In 2019, FLOWSTATE, a multi-arts outdoor performance venue for which she was a lead designer, was awarded 'The Great Place Award' - QLD Planning Institute of Australia. Tobhiyah is a proud member of APDG.



KELSEY LEE
LIGHTING DESIGNER

Kelsey is a lighting, set and costume designer for theatre and film. Previously for Ensemble she designed the lighting for OUTDATED. Recent credits include A ROOM OF ONE'S OWN for Belvoir, JALI for Aya Productions/Griffin, QUEEN FATIMA for NTop/Sydney Festival and the lighting, set and costumes for WILFRED GORDON MCDONALD PARTRIDGE for ACO. She collaborated with ACO on another project in 2019, THERE'S A SEA IN MY BEDROOM. Other theatre credits include I'M WITH HER and COMEDY KIKI 2019 for Darlinghurst Theatre; APRIL AARDVARK for ATYP; GOOD DOG, IF WE GOT SOME MORE COCAINE I COULD SHOW YOU HOW I LOVE YOU for Greendoor. For Belvoir's 25A season in 2019, Kelsey

designed the lighting for EXTINCTION OF THE LEARNED RESPONSE, SKYDUCK and KASAMA KITA. Kelsey has previously collaborated with Claudia Osborne on LULU: A MODERN SEX TRAGEDY for NIDA, where she designed the lighting, set and costume.



DARYL WALLIS
COMPOSER & SOUND
DESIGNER

Daryl Wallis is a composer, sound designer, keyboard musician, vocal coach and musical director. He won the 2013 Sydney Theatre Award for Best Score & Sound Design in a Mainstage Production with Elena Kats-Chernin for the Ensemble Theatre production of FRANKENSTEIN, and the Green Room award as musical director for THE STRANGE BEDFELLOWS. Current projects include the cabarets TAKE THIS LONGING and LE GRAND JACQUES with Jacqui Dark; DISENCHANTED with Eliane Morel; THE SIRENS' RETURN, an environmental music theatre piece based on oral histories of women from Port Kembla that will be performed at the Port Kembla pool at dusk; and THE HOUR OF LAND, a personal meditation and musical dialogue between Yosemite National Park and the Royal National Park in Sydney.

**LAUREN TULLOH****STAGE MANAGER**

Lauren Tulloh is a NIDA graduate, completing a Bachelor of Dramatic Art (Production). For Ensemble Theatre: THE WOMAN IN

BLACK, THE APPLETON LADIES' POTATO RACE (2021 regional tour), OUTDATED, THE LAST WIFE, THE LAST FIVE YEARS, MARJORIE PRIME, THE PLANT and BETRAYAL. For National Theatre of Parramatta: QUEEN FATIMA, THE THINGS I COULD NEVER TELL STEVEN and JESUS WANTS ME FOR A SUNBEAM (Belvoir return season). For the Hayes Theatre Company: REWIRED: MUSICALS REIMAGINED, AMERICAN PSYCHO, HIGH FIDELITY, ASSASSINS, THE FANTASTICKS, VIOLET and CALAMITY JANE which also toured to the Comedy Theatre Melbourne, Belvoir & regional areas. For Griffin Theatre: LIGHTEN UP. For Chapel off Chapel: SONGS FOR A NEW WORLD and VIOLET. For Sydney Opera House: CHARLIE AND LOLA'S EXTREMELY NEW PLAY. For Christine Dunstan Productions: THE GRUFFALO and THE GRUFFALO'S CHILD for which toured extensively in Australia & New Zealand. For Tall Stories UK: THE GRUFFALO: SONGS FROM THE SHOW which toured to Singapore.

**RENATA BESLIK****COSTUME SUPERVISOR**

Renata graduated from NIDA in 2007 with a bachelor in Costume Production. Costume supervising credits include: HONOUR, OUTDATED,

KENNY, CRUNCH TIME, BABY DOLL, FULLY COMMITTED, A VIEW FROM THE BRIDGE, THE BIG TIME, LUNA GALE, SHIRLEY VALENTINE, DIPLOMACY, THE KITCHEN SINK, BUYER AND CELLAR, WHO'S AFRAID OF VIRGINIA WOOLF?, ODD MAN OUT, BAREFOOT IN THE PARK, BETRAYAL, A HISTORY OF FALLING THINGS for Ensemble Theatre; PLATEÉ, APOLLO AND DAFNE, A DELICATE FIRE, FARNACE, THE RETURN OF ULYSSES, ARTASERSE, ATHALIA, THE CORONATION OF POPPEA, RAMEAU: ANACRÉON AND PIGMALION, THEODORA for Pinchgut Opera; BETTY BLOKK-BUSTER for Sydney Festival; FANGIRLS for Belvoir; HENRY V, THE WINTER'S TALE, MACBETH for Bell Shakespeare; THE GOVERNMENT INSPECTOR, STAY HAPPY KEEP SMILING, THE TEMPEST, WOYCECK, A LIE OF THE MIND, PORT, THE THREESOME for NIDA. Renata is also an accomplished costume maker and milliner.

**ERIN SHAW****ASSISTANT STAGE MANAGER**

Erin is a graduate of the Technical Theatre and Stage Management course at NIDA.

Erin has worked as a stage manager on LITTLE BORDERS

and LOVE, ME for The Old 505; MOTH for ATYP, FOLK, DIPLOMACY (plus NSW/Vic tour), AN INTIMATE EVENING WITH PAUL CAPSIS, KENNY (plus tour) and HONOUR for Ensemble Theatre, ECHOES OF THE JAZZ AGE Tour, and as assistant stage manager on DIPLOMACY, THE WIDOW UNPLUGGED OR AN ACTOR DEPLOYS, BABY DOLL and THE NORMAN CONQUESTS for Ensemble Theatre, and A ROOM OF ONE'S OWN for Belvoir. Erin has also worked as a dresser on GIRL ASLEEP for Belvoir. Erin feels privileged to have worked with such an incredible team on this production and looks forward to the season.



WE'RE STILL HERE

THANKS TO YOU!



You're an essential part of our Ensemble community and thanks to you WE'RE STILL HERE. Your generous ongoing support enabled us to welcome back audiences and return to what we do best – presenting live theatre for everyone. To ensure we can continue to share our

stories, provide opportunities for artists and entertain audiences for generations to come, please donate at ensemble.com.au/support or call **Stephen Attfield**, Philanthropy & Partnerships Manager, on **02 8918 3400**.

SPOTLIGHTS \$10000+

The Balnaves Foundation
Clitheroe Foundation
Joanne Daly & Michael Adena
Jinnie & Ross Gavin
Bruce & Matilda Hartwell
The James Family Charitable Foundation
Ingrid Kaiser
Mark Kilmurry
Jeanette & Graham McConnochie
Neilson Foundation
Victoria & Ian Pollard
Jenny & Guy Reynolds AO
Southern Steel Group Pty Ltd
John & Diana Smythe Foundation
Anonymous

BRIGHT LIGHTS \$5000-\$9999

Ellen Borda
Emma Hodgman & John Coorey
Jane Tham & Philip Maxwell
Merryn & Rod Pearse

SHINING LIGHTS \$1000-\$4999

Fiona Hopkins & Paul Bedbrook
Phil Breden
Jan & Frank Conroy
Debby Cramer & Bill Cukill
Helen Devenish Meares
Narelle & Warren Dewar
Dutta Path Pty Ltd
The Brent and Vicki Emmett
Giving Fund
Walter Fletcher
Tim & Jill Golledge
Wendy & Andrew Hamlin
Roger Hewitt
The Hilmer Family Endowment

R Hutchinson
Margaret Johnston
Family Kinston
Pamela Lamont
Pamela Lee
Dr Carolyn Lowry OAM & Peter Lowry OAM
Debbie, Garry & Val Marriott
Peter EJ Murray
John Nethercote
Barbara Osborne
Maggie & Jim Pritchitt
Alison Scott
Diana & George Shirling
Smiths Pty Ltd
Russell and Christine Stewart
Rob Thomas AO & Sam Meers AO
Christine Thomson
The Shirley Ward Foundation
Dr Elizabeth Watson
Laura Wright
Anonymous x 3

STARLIGHTS \$500-\$999

America Family
Margie Bowen-Jones
Anne Carmine
Jim Dominguez
Anne & Justin Gardener
Stephen & Vicki Gellert
Debra Graves
Warren & Elizabeth Gray
Richard & Anna Green
Bruce & Heather Hando
James Henderson
John & Nora Hinchin
Helen Markiewicz
Caroline Phillips
David & Jill Pumphrey

Mark Ramsden & Jane Westbrook
A C G Secrett
Andy & Jenny Small
Holly Stein
Robert Stewart
Robert Taffel
Anonymous x 2

LEAVE A LEGACY

We would like to thank the following Estates for their generous donations:
Estate of Freddie Bluhm
Estate of Leo Mamontoff
Estate of Dimitry Nesteroff
Estate of Margaret Stenhouse

ENCORE CIRCLE

Thank you to the following people for bequests in their wills:
Joe Sbarro



OUR PARTNERS

Thank you to our partners for playing a vital role in our success.

MAJOR PARTNER



GOVERNMENT SUPPORT



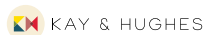
ASSOCIATE PARTNER



STRATEGIC PARTNERS



SUPPORTING PARTNERS



ENSEMBLE ED PARTNERS



VICTORIA AND IAN POLLARD

ENSEMBLE THEATRE TEAM

Artistic Director **Mark Kilmurry**
Chief Financial Officer **David Balfour Wright J.P.**
Executive Director **Loretta Busby**
Artistic Producer **Claire Nesbitt-Hawes**
Casting & Events **Merran Regan**
Literary Manager **Sarah Odillo Maher**
Artistic Coordinator **Anna Williamson**
Production Manager **Simon Greer**
Deputy Production Manager **Romy McKanna**
Technical Supervisor **Glenn Seage**
Marketing Manager **Rachael McAllister**
Acting Marketing Manager **David Warwick**
Deputy Marketing Manager **Charlotte Burgess**
Marketing Assistant **Emma Garden**
Media Relations **Susanne Briggs**
Inhouse Designer **Cheryl Ward**
Philanthropy & Partnerships Manager
Stephen Attfield
Ticketing & IT Manager **Holly McNeilage**
Ticketing and Customer Service Coordinator
Bronte Bailey
Box Office Team **Angus Evans, Anita Jerrentrup,**
Kathryn Siely, Sarah Taylor, Anna Williamson &
Jana Zvedeniuk

Front of House Manager **James Birch**
Front of House **John Allan, Megan Cribb &**
Hannah Rae Meegan
Finance Assistant **Gita Sugiyanto**
Caretaker **Bing Barry**
Maintenance Coordinator **Paul Craig**
Head Chef **Nathan Jackson**
Sous Chef **Ian Paul Aguilar Alarcon**
Restaurant Manager **Emma Baker**

ENSEMBLE LIMITED BOARD

Chair **Graham Bradley AM, Hamish Balnaves,**
John Bayley, Narelle Beattie, Mark Kilmurry
Anne-Marie McGinty, James Sherrard

ENSEMBLE FOUNDATION BOARD

Chair **Paul Clitheroe AM, Diane Balnaves,**
Graham Bradley AM, Joanne Cunningham,
Ross Gavin, Emma Hodgman, Mark Kilmurry,
Victoria Pollard, Guy Reynolds AO, Margo Weston

ENSEMBLE AMBASSADORS

Todd McKenney, Brian Meegan, Georgie Parker
& Kate Raison



CONNECT WITH US

Join our mailing list at ensemble.com.au to receive our monthly e-newsletter packed with news, what's on and special offers plus a handy pre-show reminder email with details about your upcoming show.



(02) 8918 3400
ensemble.com.au
 78 McDougall St, Kirribilli

The management reserves the right to make any alteration to cast which may be rendered necessary by illness or any other unavoidable cause. Patrons are reminded that out of consideration for others, latecomers cannot be admitted until a suitable place in the performance.