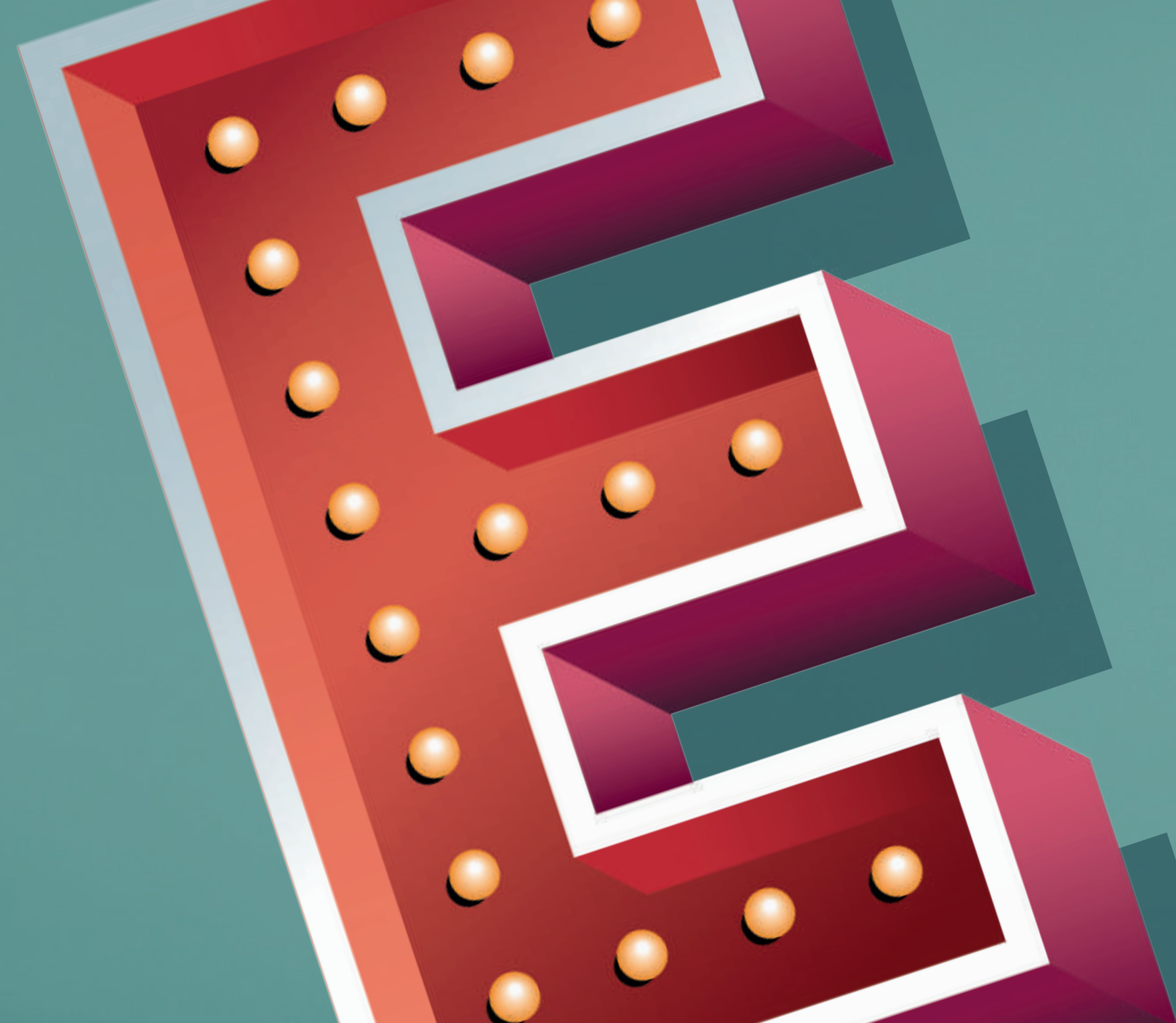


**ENSEMBLE 2022**



Ensemble Theatre proudly acknowledges  
the Cammeraigal people of the  
Eora nation as customary owners of the land  
on which we work and share our stories.  
We pay our respects to Elders past, present  
and emerging.





# HELLO 2022

.....

In the spirit of adapting and embracing a new world, we've got an inspiring year of theatre ahead to celebrate the importance of coming together and remembering your roots. 2022 welcomes eight vibrant plays, including an astounding six world premieres from the best of Australian playwrights, and two very special events.

We're thrilled to finally be presenting Harold Pinter's classic *THE CARETAKER*, a magical adaptation of *A CHRISTMAS CAROL* by Hilary Bell and the hotly anticipated sequel *UNQUALIFIED 2: STILL UNQUALIFIED* by the hilarious Genevieve Hegney and Catherine Moore.

Ensemble Theatre has proudly commissioned a swag of new Australian works including Vanessa Bates' fusion of cultures in *THE ONE*, Sam O'Sullivan's festive comedy *BOXING DAY BBQ* and Joanna Murray-Smith's powerful reimagining of Ibsen's *A DOLL'S HOUSE*. Female voices continue to ring out in *A LETTER FOR MOLLY*, where emerging Gumbaynggirr playwright Brittanie Shipway reflects with warmth and humour on how experiences of past generations shape

the future, and Anna Zeigler shines a spotlight on Rosalind Franklin, an ambitious young scientist who dared to discover, in *PHOTOGRAPH 51*.

This year we're hosting two special add-on events; Tina Bursill and Andrew McFarlane capture the complicated romance between long-distance sweethearts in *LOVE LETTERS* and Helpmann Award-winning Ursula Yovich invites you on an intimate journey through the universal language of song.

We wouldn't be looking forward to another year of exhilarating productions if it wasn't for your ongoing support ensuring Ensemble Theatre is still here presenting quality live theatre for everyone. Your generosity allows us to focus on developing new Australian voices and offering even more learning opportunities to our young audiences. Thank you.

With an uplifting season of theatre on the horizon, I can't wait to see you in the foyer in 2022.

**Mark Kilmer**  
Artistic Director

# EXPERIENCE ENSEMBLE THEATRE

## SPARK YOUR IMAGINATION

Rich in homegrown talent and reimagined classics, 2022 is a vibrant celebration of culture, identity and standing up for what you believe in. This eclectic season is jam-packed with eight extraordinary plays and two very special events. There's comedy galore, drama by the bucket load, a sprinkle of cabaret and a couple of Christmas crackers to top it all off!

Make the most of your Ensemble Theatre experience and subscribe to 5 or more plays to unlock the best savings and access a range of benefits.

# 2022 SEASON

## STILL UNQUALIFIED

29 APR – 4 JUN

## A LETTER FOR MOLLY

9 MAY – 4 JUN

## A DOLL'S HOUSE

10 JUN – 16 JUL

## THE ONE

22 JUL – 27 AUG

## PHOTOGRAPH 51

2 SEP – 8 OCT

## THE CARETAKER

14 OCT – 19 NOV

## A CHRISTMAS CAROL

25 NOV – 30 DEC

## BOXING DAY BBQ

5 DEC – 15 JAN

## SPECIAL EVENTS

## LOVE LETTERS

20 MAR – 11 APR

## AN EVENING WITH URSULA YOVICH

18 SEP – 21 SEP



"A WITTY, INTELLIGENT WORK...  
THE MOST SPARKLING NEW  
DOUBLE ACT"  
  
The Sydney Morning Herald  
(for UNQUALIFIED)

"A CRACKER... GENUINELY  
AND FREQUENTLY FUNNY"  
  
Time Out  
(for UNQUALIFIED)

BY GENEVIEVE HEGNEY & CATHERINE MOORE

UNQUALIFIED 2:  
STILL UNQUALIFIED

DIRECTED BY  
JANINE WATSON

CAST  
GENEVIEVE HEGNEY  
CATHERINE MOORE

RUNNING TIME  
APPROX. 90 MINS  
NO INTERVAL

---

REC. AGES 14+

---

SOME STRONG  
LANGUAGE

---

COMMISSIONED BY  
ENSEMBLE'S LITERARY  
FUND

---

They might be carrying briefcases and commanding bigger pay cheques, but straight-talking Joanne and perennially optimistic Felicity are back and STILL UNQUALIFIED in this sequel to 2018's hilarious hit comedy.

It's been a year since we left Joanne and Felicity singing at a karaoke bar. They now live together, work out of their home office and tackle jobs that require a far greater degree of expertise — which neither of them have. From birth doulas to truck drivers, wedding

planners to paralegals, the two women stretch the truth but never risk stretching their friendship beyond repair. The inimitable Genevieve Hegney and Catherine Moore reunite once more with director Janine Watson for this madcap comedy about (still) hanging in there.



BY BRITTANIE SHIPWAY

# A LETTER FOR MOLLY

**DIRECTED BY  
URSULA YOVICH**CAST OF 5 INCLUDES  
**JOEL GRANGER  
BRITTANIE SHIPWAY**RUNNING TIME  
APPROX. 90 MINS  
NO INTERVAL

REC. AGES 14+

ADULT THEMES AND  
STRONG LANGUAGE

Free-spirited artist Renee has a sobering revelation at a New Year's Eve party. With vivacious best friend Nick by her side, she now faces a life-changing decision. While reflecting on the tumultuous relationships between her mother, grandmother and great-grandmother, no-nonsense Nick is on hand to lift her spirits and keep Renee grounded.

Gumbaynggirr writer and actor Brittanie Shipway explores how the experiences of previous generations echo through time and shape the present. A LETTER FOR MOLLY is a vibrant, poignant story of reconnecting with family and looking to the future. This celebration of culture brings to light the importance of identity and the emotional power of a mother-daughter relationship.

**"SHIPWAY BRINGS  
AUTHORITY AND STYLE  
TO THE ROLE"**Stage Whispers  
(for CHESS THE MUSICAL)**"YOVICH UNLEASHES SUCH  
FIERCE, RAW EMOTION"**Limelight Magazine  
(for BARBARA AND THE CAMP DOGS)



BY HENRIK IBSEN

# A DOLL'S HOUSE

"MURRAY-SMITH IS ONE  
OF AUSTRALIA'S BEST  
KNOWN CONTEMPORARY  
PLAYWRIGHTS"

The Guardian

"GROUNDBREAKING  
DRAMA"

The Times UK

**ADAPTED BY  
JOANNA MURRAY-SMITH**

**DIRECTED BY  
MARK KILMURRY**

CAST OF 5 INCLUDES  
**CHANTELLE JAMIESON**  
**JAMES LUGTON**  
**DAVID SONCIN**  
**TIM WALTER**

RUNNING TIME  
APPROX. 90 MINS  
NO INTERVAL

REC. AGES 14+

SOME STRONG  
LANGUAGE

COMMISSIONED BY  
ENSEMBLE'S LITERARY  
FUND

To the world, Nora Helmer has it all. A well-respected husband, an immaculate home and three darling children. But underneath the façade of a confident modern woman juggling her life lies a secret. Or two. When an old ghost comes knocking on the Helmers' door, their seemingly solid marriage is shaken to the core.

Chantelle Jamieson (KILLING KATIE: CONFESSIONS OF A BOOK CLUB) fiercely steps into the shoes of one of the most iconic female characters in dramatic history. Through a contemporary lens, Joanna Murray-Smith has superbly adapted Ibsen's classic about throwing open the door to life's possibilities.





BY VANESSA BATES

# THE ONE

DIRECTED BY DARREN YAP

CAST OF 5 INCLUDES  
**ANGIE DIAZ**  
**DAMIEN STROUTHOS**  
**SHAN-REE TAN**

RUNNING TIME  
 APPROX. 90 MINS  
 NO INTERVAL

REC. AGES 14+

COMMISSIONED BY  
 ENSEMBLE'S LITERARY  
 FUND

Mel's got a lot on her plate. Between the anxiety-inducing return of her mother from their old home in Malaysia, her brother Eric's mysterious double life and the pressure of caring for her mother's prized poodle, Mel is hungry for more simplicity.

In the world premiere of this new and eccentric family comedy, award-winning playwright Vanessa Bates colourfully unravels the complexities of what it means to be Eurasian in contemporary Australia. Energetically funny and affectionately provocative, THE ONE is a sizzling hotpot of food, culture and identity.

"BATES' SCRIPT IS  
 COMPACT, NIMBLE,  
 WRYLY FUNNY AND  
 CONVINCINGLY VOICED"

The Sydney Morning Herald  
 (for EVERY SECOND)





2 SEP – 8 OCT

BY ANNA ZIEGLER

# PHOTOGRAPH 51

**DIRECTED BY  
ANNA LEDWICH**

CAST OF 6 INCLUDES  
**TOBY BLOME  
SHERIDAN HARBRIDGE  
GARTH HOLCOMBE  
JAKE SPEER**

RUNNING TIME  
APPROX. 90 MINS  
NO INTERVAL

REC. AGES 12+

It's 1951 and the race is on to unlock the secret to life. An ambitious young scientist, Rosalind Franklin, holds the key to decoding DNA and has a Nobel Prize worthy discovery within her reach.

Franklin's pioneering work using x-ray diffraction photography could lead to the biggest breakthrough in biological history. Hindered by her own perfectionism and rival scientists hot on her heels, Franklin grapples with the unjust consequences.

Inspired by true events, Sheridan Harbridge (Belvoir's STOP GIRL) portrays a dedicated woman, in a world dominated by men, sacrificing her life in a relentless pursuit of science.

**"VIVIDLY CAPTURES THE HUMAN SIDE OF THE PROCESS OF SCIENTIFIC DISCOVERY, WITH ALL ITS SELF-DOUBT, PETTY JEALOUSY AND COMPETITIVE SPIRIT"**

Independent UK







BY HAROLD PINTER

# THE CARETAKER

**DIRECTED BY  
IAIN SINCLAIR**

CAST  
**DARREN GILSHENAN  
ANTHONY GOOLEY  
HENRY NIXON**

RUNNING TIME  
APPROX. 2 HRS 20 MINS  
INCL. INTERVAL

REC. AGES 14+

This play contains  
historical language  
that audiences may  
find offensive.

In Harold Pinter's extraordinarily mischievous comedy, Aston asks down-and-out Davies to be a live-in caretaker. Davies leaps at the chance to change his fortunes, but the trouble is he doesn't know what a caretaker should do, especially in a room filled with junk. When Aston's manipulative brother Mike shows up, the power struggle begins. Why does Aston collect all this stuff? Will Davies ever get a pair of decent shoes? And who will fix the drip in the ceiling?

In this famous contemporary comedy, Harold Pinter cranks up the tension, piles on the laughs and teases out the emotional foibles of three lonely men. Director Iain Sinclair (A VIEW FROM THE BRIDGE) teams up once more with Darren Gilshenan (WHO'S AFRAID OF VIRGINIA WOOLF?) for this explosive, compelling theatrical event.

**"A DRILLING PSYCHOLOGICAL  
INVESTIGATION... ONE OF  
THE MOST VITAL PLAYS OF  
THE 20TH CENTURY"**

The Guardian UK

**"AN ACKNOWLEDGED  
LITERARY MASTERPIECE"**

Sunday Times UK



BY CHARLES DICKENS

# A CHRISTMAS CAROL

**ADAPTED BY  
HILARY BELL**

**DIRECTED BY  
DAMIEN RYAN**

CAST OF 5 INCLUDES  
**JANE ANDERSON**  
**JOHN BELL**  
**JUSTIN SMITH**  
**ANTHONY TAUFA**

RUNNING TIME  
APPROX. 80 MINS  
NO INTERVAL

REC. AGES 8+

COMMISSIONED  
BY ENSEMBLE'S  
LITERARY FUND

Gather your mistletoe, hang your stocking and join the Crummles family in their home as they bring to life this classic festive tale of villainy, injustice, transformation and redemption. This Victorian troupe will immerse you in the magic of Dickens' ghostly world as they conjure up spirits with music, pantomime and other thrilling surprises.

Visited by three strangers on the eve before Christmas, Ebenezer Scrooge sees his inexcusable penny-pinching ways laid bare: from brushes with the

past, to enlightenment in the present and dreaded visions of the future. Will Scrooge repent and throw turkey to the wind, or will he hold on to his purse strings, forever doomed like his poor deceased friend Marley?

Playing the misanthropic Scrooge, John Bell (DIPLOMACY) is joined by a magnificent ensemble cast in this delightful adaptation by Hilary Bell. A joyous family event not to be missed!

"THE INCOMPARABLE  
JOHN BELL... A LIVING  
LEGEND OF AUSTRALIAN  
THEATRE"

The Sydney Morning Herald





BY SAM O'SULLIVAN

# BOXING DAY BBQ

**DIRECTED BY**  
**MARK KILMURRY**

CAST  
**DANIELLE CARTER**  
**EMMA HARVIE**  
**AILEEN HUYNH**  
**JAMIE OXENBOULD**  
**BRIAN MEEGAN**

RUNNING TIME  
APPROX. 90 MINS  
NO INTERVAL

REC. AGES 12+

COMMISSIONED  
BY ENSEMBLE'S  
LITERARY FUND

It's Sydney. It's Christmas time. And it's stinking hot. Even though she's unable to be there, Mum is insisting the family gather in honour of Dad – he was the BBQ king!

Their adult children, wine snob Peter and cynical Connie, reluctantly get the clan together for round two of festivities – they've survived the chaos of Christmas but Boxing Day is set to pack a punch. In raising a toast to their Dad's memory, old grudges and family tensions sizzle to the surface. Surely they'll be able to stop grilling each other for one day.

With a scorching ensemble under the direction of Mark Kilmurry, don't miss Sam O'Sullivan's blistering comedy about the ridiculous holiday season in all its glory.

**"KILMURRY'S SUPER-KEEN EYE FOR THE LITTLE ABSURDITIES AND FRAILTIES OF THE HUMAN ANIMAL PAYS DIVIDENDS AGAIN AND AGAIN"**

*Limelight Magazine*  
(for OUTDATED)

**"CHARMING, PERPLEXING AND HEART-WARMING ALL AT ONCE AND O'SULLIVAN IS ONE TO WATCH"**

*Time Out*  
(for BLOCK UNIVERSE (OR SO IT GOES))







BY A.R. GURNEY

# LOVE LETTERS

**DIRECTED BY  
RACHEL CHANT**

CAST  
**TINA BURSILL  
ANDREW MCFARLANE**

**DATES**  
SUN 20 MAR 2PM  
MON 21 MAR 7.30PM

SUN 27 MAR 2PM  
MON 28 MAR 7.30PM

SUN 3 APR 2PM  
MON 4 APR 7.30PM

SUN 10 APR 2PM  
MON 11 APR 7.30PM

RUNNING TIME  
APPROX. 90 MINS  
NO INTERVAL

REC. AGES 12+

What begins as frivolous note sharing between childhood friends, unfolds into a lifelong love affair via the art of letter writing.

Rebellious Melissa and straitlaced Andrew pour their hearts on to the page, bonding over experiences of angst-ridden boarding schools, travel adventures, career ambitions and failed relationships. Young infatuation transforms into a complicated romance, as fate is not on their side.

A.R. Gurney's Pulitzer Prize nominated LOVE LETTERS envelopes the audience in an air of shared nostalgia. Tina Bursill and Andrew McFarlane deliver an evocative, heart-warming story of star-crossed lovers, stamped with moments of tender humour.



AN EVENING WITH

# URSULA YOVICH

Sink deep into the soulful sounds of Ursula Yovich and experience an electrifying evening of songs and stories from this multi-award winning performer.

Growing up in Maningrida, in the heart of Arnhem Land, with a diverse household where Burarra, Serbian and Filipino were spoken, Ursula discovered a newfound obsession with language.

Inspired by her family roots in the Northern Territory, this sublime storyteller presents a magical and moving evening about the importance of connection and culture.

With a red-hot blend of toe-tappers and slow jams, Ursula combines her raw talent and unmistakable charm to take you on a journey through the universal language of song. Don't miss it!

**DATES**  
SUN 18 SEP 2PM  
MON 19 SEP 7.30PM  
TUE 20 SEP 7.30PM  
WED 21 SEP 11AM

RUNNING TIME  
APPROX. 75 MINS  
NO INTERVAL





# THE SCENES STEP BEHIND

- Curious about the creative process? Come along to our insightful audience events and experience firsthand what goes on behind the scenes.

- **DIRECTOR AT WORK**

As part of a small group, witness our skilled directors and actors at work in the rehearsal room and discover how a play is brought to life on the stage.

**UNQUALIFIED 2:  
STILL UNQUALIFIED**  
with Janine Watson  
Thu 7 Apr 4pm

**THE ONE**  
with Darren Yap  
Thu 30 Jun 4pm

**BOXING DAY BBQ**  
with Mark Kilmurry  
Thu 17 Nov 4pm

Director at Work sessions are \$35 full price and \$25 for students. Spaces are strictly limited.

Book online at [ensemble.com.au](http://ensemble.com.au) or call Box Office on (02) 8918 3400.

- **POST SHOW Q&A**

Join an engaging conversation with the cast and creatives straight after you see the play. Simply purchase tickets to a Q&A performance, marked on the calendar at the back of this brochure and online, then remain in your seat after the show armed with your burning questions.

- **FREE TEEN NIGHTS**

Introduce the teenagers in your life to the magic of live theatre by inviting them to join you at one of our Free Teen Nights, highlighted on our performance calendar and the website. Complimentary tickets for 13 – 19 year olds can be booked alongside an adult subscription or ticket, subject to availability.

## SIGN UP TO OUR E-NEWSLETTER

Stay up-to-date with our news, reviews and special offers by joining our mailing list at [ensemble.com.au/join-newsletter](http://ensemble.com.au/join-newsletter) or ticking the box on your subscription form. You'll also receive a handy pre-show reminder with safety info, the latest Bayly's Bistro specials and details about your upcoming show.

## DOWNLOAD A PROGRAM

Discover more about your play with a digital program packed full of insights including notes from the playwright or director as well as a glimpse into the rehearsal room. You'll receive a link to download a program in your pre-show reminder.

## LIVESTREAMED Q&As

In 2022 we aim to livestream a Q&A session for each of our eight season plays. Follow us on Facebook @ensembletheatre to find out when we're going live and be ready with your questions for our cast and creatives.

## #ensemlesydney

Follow us on social media for our latest news and videos:



## GIVE THE GIFT OF THEATRE

Share your love of theatre by treating friends and family to an unforgettable Ensemble experience. It's the perfect way to put your loved ones in control, so they can choose exactly how to spend their gift. Vouchers can be used to buy show tickets, a season subscription or a delicious meal at Bayly's Bistro, plus they last three years for ultimate flexibility. Purchase a gift voucher online at [ensemble.com.au/gift-vouchers](http://ensemble.com.au/gift-vouchers), at the Box Office or call (02) 8918 3400.

# MORE WAYS TO MAKE THE MOST OF YOUR ENSEMBLE EXPERIENCE





**"Good food, great service, beautiful spot - what more could one want!"** 2021 Subscriber

Nestled over the water in Kirribilli, Bayly's Bistro is the ideal location for delicious, fresh food with a spectacular view, not to mention a guarantee of getting you to your show on time.

Head Chef Nathan Jackson puts Australian produce and wine centre stage to showcase the flavour, diversity and quality of locally sourced ingredients.

Enjoy an à la carte menu of delicately cooked seafood, slow-braised meats and delectable desserts, perfectly paired with a bottle from our superb wine selection.

## OPENING TIMES

**Tue – Sat** Bayly's Bistro is open for lunch after 11am shows. Dinner service coincides with evening show times.

### TO BOOK

Call Bayly's Bistro on **(02) 8918 3455**  
Email **baylys@ensemble.com.au**  
Reserve online at **ensemble.com.au/bistro**

Please note: Online reservations close 3 hours prior to dining. Call the Bistro for any last-minute bookings.

**Ensemble Theatre subscribers get 10% off food orders (drinks not included), so remember to present your Arts Bonus Card when you dine.**



Celebrating over 30 years at Ensemble Theatre, award-winning bar manager Jim is a much-loved face in the foyer ensuring you'll be well looked after.

Offering a quality wine list featuring our friends at Hungerford Hill, spirits, craft beer and Jim's bespoke cocktails, the Foyer Bar also offers cheese plates and tasty snacks to hit the spot.

## OPENING TIMES

The bar is open an hour before all performances, during interval and after the show (except after Sunday performances).



# SUPPORT US

Thanks for coming!  
Don't forget to wash your hands!

Ensemble Theatre is still here thanks to your exceptional generosity.

This pandemic has highlighted just how quickly circumstances can change; one moment we're open at 100% capacity and the next we have to close.

Thanks to your support, after each lockdown we're able to swiftly return to presenting productions of the same vibrancy, quality and relevance that audiences expect at Ensemble Theatre.

Beyond the mainstage, your generosity allows us to develop important programs focusing on artist development, education opportunities and community outreach.

To ensure Ensemble, Australia's longest continuously running professional theatre company, continues to create and share extraordinary stories, please consider joining our community of valued supporters by adding a tax-deductible gift to your subscription or donate online at [ensemble.com.au/support-us](https://ensemble.com.au/support-us)

## LEAVE A LEGACY

If your love of theatre inspires you to be part of our history, please remember Ensemble Theatre in your will.

A legacy gift is a meaningful way to commemorate your relationship with Ensemble and helps to culturally enrich the lives of future generations by ensuring they can experience the same joy theatre brought to your life.

For more information on leaving a gift, corporate partnerships or supporting artistic opportunities, contact our Philanthropy & Partnerships Manager Stephen Attfield on **02 8918 3400** or [stephena@ensemble.com.au](mailto:stephena@ensemble.com.au)

# THANK YOU





ENSEMBLE  
ED

# EDUCATION 2022

## YOUTH THEATRE PACKS

Looking for ways to spend your NSW Government Creative Kids voucher? Why not use it towards our Youth Theatre Pack and broaden their creative horizons.

Kids can experience 3 plays, choosing from the Q&A performances throughout the year. If eligible for the Creative Kids program, put your \$100 voucher towards a Youth Theatre Pack and only pay the difference of \$23.

It's a great opportunity for youngsters to explore their passion for the performing arts and learn more about the behind-the-scenes process.

For parents wanting to accompany their kids, we also offer an adult 3 Play Pack at a discounted rate. For more info visit [ensemble.com.au/youth-theatre-pack](http://ensemble.com.au/youth-theatre-pack)

## ENSEMBLE EDUCATION OUTREACH PROGRAM

Now in its seventh year, the Ensemble Ed Outreach Program is giving more and more students across Australia the opportunity to experience the thrill of live theatre, often for the very first time.

## DEDICATED SCHOOL PERFORMANCES

Two performances of Vanessa Bates' brand new comedy THE ONE will be exclusively offered to school groups thanks to the support of the Clitheroe Foundation and Victoria and Ian Pollard. After the show,

students have the opportunity to put their questions to the cast and creative team. Lunch and snacks are provided by our partners Foodbank and Tip Top to ensure they get the full experience of a day at the theatre.

## LIVESTREAMING THEATRE TO REGIONAL AUSTRALIA

For schools unable to attend Ensemble, a special performance of THE ONE will be live-streamed direct from the stage into the classroom followed by an interactive Q&A session. This initiative is far-reaching across remote areas of the country and we're continually growing our online schools audience year by year.

## SMARTS PROGRAM

We're delighted to continue working in collaboration with The Smith Family's SmArts Program to provide students an immersive theatre experience. A week-long program of workshops gives them a taste of various production disciplines including set design, directing and stage management.

**"We see our partnership with Ensemble Theatre as an exciting collaboration that is providing disadvantaged young people living in low socio-economic or marginalised communities access to live theatre."**

Anne Samonte,  
The Smith Family





# ENSEMBLE DEVELOPMENT

"Ensemble Theatre is a highly regarded company with a reputation of producing high quality relevant theatre. BLACK COCKATOO is a compelling story that must be told across the country."

Robin Batt, Head of Programming  
at Bunjil Place, Victoria

## COMMISSIONING NEW AUSTRALIAN PLAYS

2022 welcomes six world premieres and five of these are Ensemble Theatre commissions which have all been made possible by our generous supporters.

Ensemble Theatre is dedicated to developing Australian voices and creative workshops continue throughout the year to ensure we can consistently present exciting new plays every season.

## ENSEMBLE THEATRE ON TOUR

Following the sell-out success of BLACK COCKATOO, written by Geoffrey Atherden and directed

by Wesley Enoch, this landmark play inspired by the true story of Johnny Mullagh and Australia's first international cricket team will embark on a national tour to 25 venues in 2022.

## PROVIDING PATHWAYS TO EMERGING DIRECTORS

The Ensemble Theatre Sandra Bates Director's Award, now in its seventh year, continues to offer new directors a unique opportunity to hone their skills. Successful recipients receive a paid Assistant Director role supporting season plays and other development projects.

This year we're delighted to welcome several past winners to the mainstage:

**Rachel Chant**  
(2020/2021 recipient)  
LOVE LETTERS

**Janine Watson**  
(2016 recipient)  
UNQUALIFIED 2: STILL UNQUALIFIED

**Ursula Yovich**  
(2021 recipient)  
A LETTER FOR MOLLY  
AN EVENING WITH  
URSULA YOVICH

In 2022 this award is proudly supported by Jinnie and Ross Gavin.

# SUBSCRIBE & SAVE

A subscription is the best way to experience exceptional theatre across the entire year. Not only do our valued subscribers enjoy generous savings on tickets, you also unlock a suite of loyalty benefits.

## EXCELLENT VALUE

Save at least 7% on full-price single tickets and access your discount all year for extra tickets to share with your family and friends. Want to save more? 8 play subscribers save at least 11%.

## NO ADDITIONAL FEES

Subscription bookings are free from transaction fees.

## BEST SEATS IN THE HOUSE

Book early and secure the best availability before single tickets go on sale.

## BRING YOUR FRIENDS

Access your subscription discount all year for extra tickets to share with your family and friends.

## EXTRA TIME TO PAY

Spread the cost of your subscription over two payments. A \$6 fee and conditions apply.

## EXCHANGE FOR FREE

Plans change? Your first ticket exchange is fee-free as long as you exchange your tickets at least 48 hours before your performance. You'll receive an email confirmation with your new performance date and time.

## MISSED PERFORMANCE

Missed your show and want to reschedule? You can purchase tickets for another performance of the show you missed for just \$25 (subject to availability). Simply contact the Box Office to arrange your new tickets.

## EXCLUSIVE OFFERS

Get discounts on cinema tickets, classical music, wine and much more with your exclusive Arts Bonus card.

## EAT AT THE THEATRE

Join us downstairs at Bayly's Bistro and save 10% on your food order.

## EVEN MORE BENEFITS FOR 8 PLAY SUBSCRIBERS

- Book an 8 play 2022 subscription before 31 January to win an 8 play 2023 subscription for two people.\*
- Pick up a complimentary Ensemble shopping bag to carry all your goodies.

\*T&Cs apply: To enter, submit your completed subscription form by 11.59pm on 30 January 2022. The prize consists of two 8 play 2023 subscriptions excluding special events. The winner will be drawn on Monday 31 January 2022 and notified by phone and email. The winner is responsible for booking their 2023 subscription.

# HOW TO SUBSCRIBE

Once you've explored our season and chosen your year of theatre, there's a number of ways you can book a subscription package:

## ONLINE

Book the best available seats on the spot by purchasing online at [ensemble.com.au/subscribe](https://ensemble.com.au/subscribe)

## PHONE

Call us on (02) 8918 3460 and we can fill out your booking form over the phone. Please note, tickets are not booked directly at time of call.

## BOOKING FORM

**Online**  
A digital version of the booking form is available to complete on our website at [ensemble.com.au/subscribe](https://ensemble.com.au/subscribe).  
Once you click submit your form will join the queue to be processed and a member of the team will be in contact shortly to confirm your booking.

## Paper Form

Or pull out the booking form from this brochure and once you've filled it out, send it to us by:  
**POST**  
Ensemble Theatre Subscriptions  
78 McDougall Street  
Kirribilli NSW 2061

## EMAIL

[subscriptions@ensemble.com.au](mailto:subscriptions@ensemble.com.au)

## IN PERSON

Feel free to drop by the Box Office to hand in your form and if you require assistance, our friendly team will be available to help.  
**Please note** we process booking forms in order of receipt so send your form in as early as possible.

# KEY DATES

**Monday 15 November**  
2022 Season launches.

**Tuesday 16 November**  
2022 subscriptions go on sale at 9.30am.

**Monday 31 January**  
Last day to secure the best available seats before single tickets go on sale.

**Tuesday 1 February**  
Single tickets for 2022 Season plays and Special Events go on sale at 9.30am.

# 2022 SUBSCRIPTIONS

## PACKAGE PRICES

FULL PRICE PACKAGES	5 plays	6 plays	7 plays	8 plays
Evenings & weekend matinees	\$370	\$444	\$518	\$568
Weekday matinees & previews	\$345	\$414	\$483	\$528

SENIORS CARD PACKAGES	5 plays	6 plays	7 plays	8 plays
Evenings & weekend matinees	\$355	\$426	\$497	\$544
Weekday matinees & previews	\$330	\$396	\$462	\$504

PENSIONER/GROUPS 10+ PACKAGES	5 plays	6 plays	7 plays	8 plays
Evenings & weekend matinees	\$335	\$402	\$469	\$512
Weekday matinees & previews	\$310	\$372	\$434	\$472

8 PLAYS	Full price	Seniors Card	Pensioner/Groups 10+
Evenings & weekend matinees	\$71	\$68	\$64
Weekday matinees & previews	\$66	\$63	\$59

5,6,& 7 PLAYS	Full price	Seniors Card	Pensioner/Groups 10+
Evenings & weekend matinees	\$74	\$71	\$67
Weekday matinees & previews	\$69	\$66	\$62

SAVE  
AT LEAST  
11%

SAVE  
AT LEAST  
7%

## GREAT VALUE FOR STUDENTS AND UNDER 30s

Looking for affordable theatre? We offer significant savings on subscription tickets for full-time students and under 30s.

STUDENTS/UNDER 30 TICKETS	Price per ticket
Evenings & weekend matinees	\$41
Weekday matinees & previews	\$36

## SPECIAL ADD ON EVENTS

Subscribers enjoy priority access to the best available seats for our Special Events:

- LOVE LETTERS
- AN EVENING WITH URSULA YOVICH

SPECIAL EVENT TICKETS	Price per ticket
Full price	\$66
Seniors Card	\$64
Pensioner/Groups 10+	\$61

## SINGLE TICKET PRICES

From Tuesday 1 February, non-subscription prices will be listed on our website [ensemble.com.au](https://ensemble.com.au). Single ticket pricing is subject to change and availability.

## REDEEM YOUR CREDIT VOUCHER

If you have a credit voucher remember you can use this towards your 2022 subscription, just mark this on the payment section of your booking form.



2022 PERFORMANCE CALENDAR

APRIL			MAY			JUNE		
Tue			T			T		
Wed			W			W 1	11am, 6.15pm FT	8.15pm
Thu			T			T 2	8.15pm	11am AD, 6.15pm
Fri	1		F			F 3	8.15pm	11am, 6.15pm
Sat	2		S			S 4	1pm	4.30pm AD, 8.15pm
Sun	3		S 1	5pm P		S 5		
Mon	4		M 2			M 6		
Tue	5		T 3	11am, 8.15pm Opening		T 7		
Wed	6		W 4	8.15pm		W 8	A DOLL'S HOUSE	
Thu	7		T 5			T 9		
Fri	8		F 6	8.15pm		F 10	8pm P	
Sat	9		S 7	2pm, 8.15pm Q&A	A LETTER FOR MOLLY	S 11	3.30pm P, 8pm P	
Sun	10		S 8	1pm, 5pm		S 12	5pm P	
Mon	11		M 9		8.15pm P	M 13		
Tue	12		T 10		11am P, 8.15pm P	T 14	11am, 7.30pm	
Wed	13		W 11	11am, 8.15pm		W 15	8pm Opening	
Thu	14		T 12	11am, 6.15pm	8.15pm P	T 16	7.30pm	
Fri	15		F 13		11am, 8.15pm Opening	F 17	8pm	
Sat	16		S 14	1pm, 4.30pm	8.15pm	S 18	3.30pm, 8pm	
Sun	17		S 15	2pm	5pm	S 19	5pm	
Mon	18		M 16			M 20		
Tue	19		T 17	11am Q&A, 6.15pm	8.15pm	T 21	7.30pm	
Wed	20		W 18	11am, 6.15pm	8.15pm Q&A	W 22	7.30pm	
Thu	21		T 19	8.15pm	11am, 6.15pm	T 23	11am, 7.30pm	
Fri	22		F 20	8.15pm	11am, 6.15pm FT	F 24	8pm Q&A	
Sat	23		S 21	1pm	4.30pm, 8.15pm	S 25	3.30pm, 8pm	
Sun	24		S 22	5pm	2pm	S 26	5pm	
Mon	25		M 23			M 27		
Tue	26		T 24	8.15pm	11am, 6.15pm	T 28	11am Q&A	
Wed	27	STILL UNQUALIFIED	W 25	8.15pm	11am Q&A, 6.15pm	W 29	7.30pm	
Thu	28		T 26	11am AD, 6.15pm	8.15pm	T 30	11am, 7.30pm	
Fri	29	8.15pm P	F 27	8.15pm	11am, 6.15pm			
Sat	30	2pm P, 8.15pm P	S 28	4.30pm AD, 8.15pm	1pm			
Sun			S 29	2pm	5pm			
			M 30					
			T 31	11am, 6.15pm	8.15pm			

P: Preview | Q&A: Question and Answer | FT: Free Teen | AD: Audio Described AD)))

JULY			AUGUST			SEPTEMBER			OCTOBER		
Tue			T			T			T		
Wed			W			W	PHOTOGRAPH 51		W		
Thu			T			T 1			T		
Fri	1	8pm	F			F 2	8pm P		F		
Sat	2	3.30pm, 8pm	S			S 3	3.30pm P, 8pm P		S 1	3.30pm AD, 8pm	
Sun	3	5pm	S			S 4	5pm P		S 2	5pm	
Mon	4		M 1			M 5			M 3		
Tue	5	7.30pm	T 2	7.30pm		T 6	11am, 7.30pm		T 4	11am, 7.30pm	
Wed	6	7.30pm	W 3	7.30pm		W 7	8pm Opening		W 5	7.30pm FT	
Thu	7	11am AD, 7.30pm	T 4	11am, 7.30pm		T 8	7.30pm		T 6	11am, 7.30pm	
Fri	8	8pm	F 5	8pm Q&A		F 9	8pm		F 7	8pm	
Sat	9	3.30pm AD, 8pm	S 6	3.30pm, 8pm		S 10	3.30pm, 8pm		S 8	3.30pm, 8pm	
Sun	10	5pm	S 7	5pm		S 11	5pm		S 9		
Mon	11		M 8			M 12			M 10		
Tue	12	11am, 7.30pm	T 9	7.30pm		T 13	7.30pm		T 11		
Wed	13	7.30pm FT	W 10	7.30pm		W 14	7.30pm		W 12	THE CARETAKER	
Thu	14	11am, 7.30pm	T 11	11am Q&A, 7.30pm		T 15	11am, 7.30pm		T 13		
Fri	15	8pm	F 12	8pm		F 16	8pm Q&A		F 14	8pm P	
Sat	16	3.30pm, 8pm	S 13	3.30pm, 8pm		S 17	3.30pm, 8pm		S 15	3.30pm P, 8pm P	
Sun	17		S 14	5pm		S 18	5pm		S 16	5pm P	
Mon	18		M 15			M 19			M 17		
Tue	19		T 16	7.30pm		T 20	11am Q&A		T 18	11am, 7.30pm	
Wed	20	THE ONE	W 17	7.30pm		W 21	7.30pm		W 19	8pm Opening	
Thu	21		T 18	11am AD, 7.30pm		T 22	11am, 7.30pm		T 20	7.30pm	
Fri	22	8pm P	F 19	8pm		F 23	8pm		F 21	8pm	
Sat	23	3.30pm P, 8pm P	S 20	3.30pm AD, 8pm		S 24	3.30pm, 8pm		S 22	3.30pm, 8pm	
Sun	24	5pm P	S 21	5pm		S 25	5pm		S 23	5pm	
Mon	25		M 22			M 26			M 24		
Tue	26	11am, 7.30pm	T 23	11am, 7.30pm		T 27	7.30pm		T 25	7.30pm	
Wed	27	7.30pm	W 24	7.30pm FT		W 28	7.30pm		W 26	7.30pm	
Thu	28	8pm Opening	T 25	11am, 7.30pm		T 29	11am AD, 7.30pm		T 27	11am, 7.30pm	
Fri	29	8pm	F 26	8pm		F 30	8pm		F 28	8pm Q&A	
Sat	30	3.30pm, 8pm	S 27	3.30pm, 8pm					S 29	3.30pm, 8pm	
Sun	31	5pm	S 28						S 30	5pm	
			M 29						M 31		
			T 30								
			W 31								

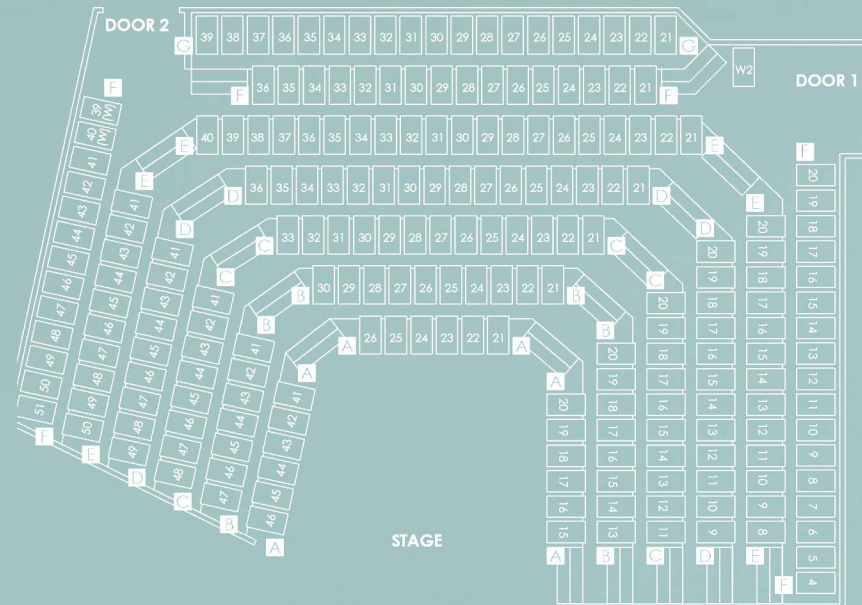


# 2022 PERFORMANCE CALENDAR

NOVEMBER				DECEMBER				JANUARY			
Tue	1	11am Q&A		T				T			
Wed	2	7.30pm		W				W			
Thu	3	11am, 7.30pm		T	1			T			
Fri	4	8pm		F	2	8.15pm		F			
Sat	5	3.30pm, 8pm		S	3	2pm, 8.15pm Q&A	BOXING DAY BBQ	S			
Sun	6	5pm		S	4	1pm, 5pm		S	1		
Mon	7			M	5		8.15pm P	M	2		
Tue	8	7.30pm		T	6		11am P, 8.15pm P	T	3	7.30pm	
Wed	9	7.30pm		W	7	11am, 8.15pm		W	4	7.30pm	
Thu	10	11am AD, 7.30pm		T	8	11am, 6.15pm	8.15pm P	T	5	11am AD, 8.15pm	
Fri	11	8pm		F	9		11am, 8.15pm Opening	F	6	8.15pm	
Sat	12	3.30pm AD, 8pm		S	10	1pm, 4.30pm	8.15pm	S	7	4.30pm AD, 8.15pm	
Sun	13	5pm		S	11	2pm	5pm	S	8	5pm	
Mon	14			M	12			M	9		
Tue	15	11am, 7.30pm		T	13	11am Q&A	8.15pm	T	10	11am	
Wed	16	7.30pm FT		W	14	11am, 6.15pm	8.15pm Q&A	W	11	7.30pm FT	
Thu	17	11am, 7.30pm		T	15	11am AD, 6.15pm	8.15pm	T	12	11am, 8.15pm	
Fri	18	8pm		F	16	8.15pm	11am, 6.15pm	F	13	8.15pm	
Sat	19	3.30pm, 8pm		S	17	1pm AD	4.30pm, 8.15pm	S	14	4.30pm, 8.15pm	
Sun	20			S	18	5pm	2pm	S	15	5pm	
Mon	21			M	19			M	16		
Tue	22			T	20	8.15pm	11am Q&A, 6.15pm	T	17		
Wed	23	A CHRISTMAS CAROL		W	21	8.15pm	11am, 6.15pm	W	18		
Thu	24			T	22	11am, 6.15pm	8.15pm	T	19		
Fri	25	8.15pm P		F	23	11am, 6.15pm	8.15pm	F	20		
Sat	26	2pm P, 8.15pm P		S	24	5pm		S	21		
Sun	27	5pm P		S	25	CHRISTMAS DAY	CHRISTMAS DAY	S	22		
Mon	28			M	26	BOXING DAY	BOXING DAY	M	23		
Tue	29	11am, 8.15pm Opening		T	27	11am, 6.15pm FT	8.15pm	T	24		
Wed	30	8.15pm		W	28	11am, 6.15pm	8.15pm	W	25		
Thu				T	29	8.15pm	11am, 6.15pm	T	26		
Fri				F	30	8.15pm	11am, 6.15pm	F	27		
Sat				S	31	NEW YEAR'S EVE	NEW YEAR'S EVE	S	28		
Sun								S	29		
Mon								M	30		
								T	31		

31  
P: Preview | Q&A: Question and Answer | FT: Free Teen | AD: Audio Described 

FORM POSITIONED HERE – PANTONE 7677 DOES NOT PRINT



## ACCESSIBILITY

### AUDIO DESCRIBED PERFORMANCES



Vision Australia provides a complimentary audio description service for audience members who are vision impaired. Audio described performances are marked AD in the performance calendar and are listed on our website.

### HEARING LOOP



Our upgraded hearing loop now amplifies sound to most seats in the theatre. If you would like to use this service, please let us know when booking and a receiver will be available at the Box Office. Thanks to the Commonwealth of Australia and Mr Trent Zimmerman MP for their support under the Stronger Communities Programme.

## TICKET INFORMATION

### CONCESSION DISCOUNTS

Discounts are available for:

- Seniors (with valid Seniors Card)
- Pensioners (with valid Pensioner Concession Card)
- Australian full-time students (with valid Student Card)
- Under 30s (aged 30 and under at time of booking)
- Media, Entertainment and Arts Alliance (MEAA) members

- Australian Writer's Guild (AWG) members  
Proof of age or valid concession card must be provided at time of booking.

### GROUPS

Discounts and priority bookings are available to groups of ten or more.

### COVID CONSCIOUS

If you're feeling unwell contact the Box Office prior to your performance and we'll arrange an exchange, credit or refund where possible.

## SEAT MAP

The experience from all seats is excellent in our intimate theatre. Please refer to the seating map to work out where you'll be most comfortable and contact the Box Office to discuss specific seating or access requirements.

**When physical distancing restrictions apply, selected seats will be removed from sale at our discretion.**

### WHEELCHAIR SEATS AND LEVEL ACCESS



Ensemble Theatre is fully accessible with wheelchair friendly seating, including street level access to row F in our auditorium, and lift access to facilities and Bayly's Bistro. If you have seating requirements, please let us know when completing your subscription form.

### CONDITIONS

Tickets cannot be refunded after purchase except as outlined in the Live Performance Australia (LPA) Code of Practice. See [liveperformance.com.au](https://liveperformance.com.au) for details. For all other conditions of sale including transaction fees and ticket exchanges, please see our website [ensemble.com.au](https://ensemble.com.au) or contact Box Office on **(02) 8918 3400**.

Please note: subscription bookings do not have any transaction fees.





HOP ON  
A FERRY

CATCH  
A TRAIN

SEE YOU  
HERE!

# GETTING HERE IS EASY

Just a hop, skip and a jump north of the bridge from the CBD, Ensemble Theatre is nestled over the water in Kirribilli.

## TRAIN

Take the train to Milsons Point station, one stop north after Wynyard Station, exit at Ennis Rd and it's just a 5 minute walk down Willoughby Street.

## FERRY

The most scenic way to travel, jump on a ferry to North Sydney Wharf (a 10 minute walk) or Kirribilli Wharf (a 10 - 15 minute walk).

## CAR

There's free (but time-limited) street parking all around the theatre. Please allow ample time to park before your performance or booking at Bayly's Bistro.

## VAL THE MATINEE BUS

We offer a bus service for weekday matinee performances. The bus departs from Ennis Rd, outside Milsons Point train station from 10am to 10.45am,

then returns to the station after the performance. We also offer an after-lunch service for Bayly's Bistro diners. Bookings are not required but there is a suggested \$3 donation to help cover costs.

This service is offered thanks to the generosity of our donors, Ros and Alex Hunyor. Ros' mother Val Lovett treasured her visits to the Ensemble and the bus is fondly named in her memory.

# OUR PARTNERS

Thank you to our partners for playing a vital role in our success.

## MAJOR PARTNER



## GOVERNMENT PARTNER



## ASSOCIATE PARTNER



## STRATEGIC PARTNERS



## SUPPORTING PARTNERS



## ENSEMBLE ED PARTNERS



## ENSEMBLE AMBASSADORS

Thanks to our Ambassadors for their continuing support.

TODD MCKENNEY

BRIAN MEEGAN

GEORGIE PARKER

KATE RAISON



# CONTACT US

**ADDRESS**  
78 McDougall Street  
Kirribilli NSW 2061  
[ensemble.com.au](http://ensemble.com.au)


**BOX OFFICE & ADMINISTRATION**  
(02) 8918 3400  
[boxoffice@ensemble.com.au](mailto:boxoffice@ensemble.com.au)

**SUBSCRIPTIONS**  
(02) 8918 3460  
[subscriptions@ensemble.com.au](mailto:subscriptions@ensemble.com.au)


**BAYLY'S BISTRO**  
(02) 8918 3455  
[baylys@ensemble.com.au](mailto:baylys@ensemble.com.au)


**COVID SAFE**  
 Ensemble Theatre is a COVID Safe registered business. We've carefully implemented a few operational changes, guided by the NSW Government's health orders. For the most up-to-date info, please visit [ensemble.com.au/safety](http://ensemble.com.au/safety)

**STAY CONNECTED**  
Join our mailing list at [ensemble.com.au](http://ensemble.com.au) or tick the box on your subscription form to receive our monthly e-newsletter packed with news, reviews and special offers plus a handy pre-show reminder email with details about your upcoming show.

 [@ensembletheatre](https://www.facebook.com/ensembletheatre)

 [@ensembletheatre](https://www.instagram.com/ensembletheatre)

 [@ensemblsydney](https://twitter.com/ensemblsydney)

 [EnsembleTV](https://www.youtube.com/EnsembleTV)

**SUBSCRIPTION OFFICE HOURS**  
**Monday to Friday**  
9.30am–5pm

**BOX OFFICE HOURS\***  
**Monday – Saturday**  
9.30am – 5pm

60 minutes prior to a performance, the Box Office is open for ticket collection to that performance only.

**Sunday**  
Open 60 minutes prior to matinee performance for ticket collection only.

\*Box Office phone line closes 45 minutes prior to all evening performances.

Opening hours are subject to change dependent on the performance calendar.

Box Office is closed on Public Holidays. Check the website for more details.

# SEE YOU AT THE THEATRE

## SPECIAL THANKS

**A huge thank you to the team who made this brochure possible.**

**Designer**  
Alphabet Studio

**Photographers**  
Daniel Boud, Phil Erbacher,  
Richard Hedger, Karen Watson,  
Christian Trinder & Prudence Upton

**Stylist**  
Brendan De La Hay

**Make-up Artist**  
Peggy Carter

**Hair Stylist**  
Rebecca Taylor

**Videographers**  
Blake Lisk &  
Mitchel Loveday

**Printer**  
Special T Print

Details in the brochure are correct at time of publication. Ensemble Theatre reserves the right to add, withdraw or substitute artists and to vary the program and prices.





# THEATRE FOR EVERYONE



ENS  
THEATRE  
M<sup>B</sup>LE