



FOR EVERYONE

2021

EDUCATION



ENSEMBLE
ED

WELCOME TO ENSEMBLE THEATRE'S 2021 SEASON

Ensemble Theatre is committed to supporting teachers and students in developing an appreciation of the Performing Arts. Theatre opens up new worlds, triggers the imagination and engages us in a way no other art form can. We provide unique live theatre experiences which we hope stimulate discussions long after the curtain call and continue into the classroom. This season we've highlighted four unmissable plays from the best international and Australian playwrights with strong curriculum links and the propensity to spark creativity.

Mark Kilmurry | Artistic Director

SELECTED EDUCATION PLAYS

HONOUR

BY JOANNA MURRAY-SMITH

Term 2

23 Apr – 5 Jun

THE WOMAN IN BLACK

BY SUSAN HILL AND
STEPHEN MALLATRAT

Terms 2 & 3

11 Jun – 24 Jul

ART

BY YASMINA REZA

Terms 3 & 4

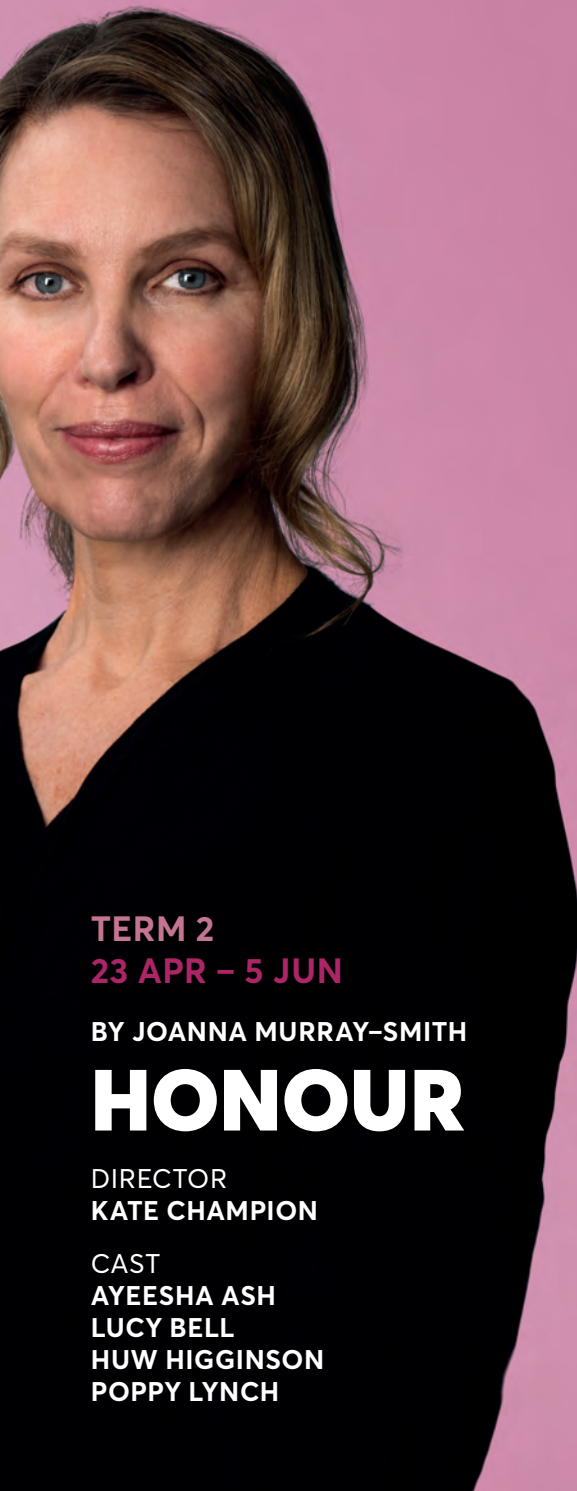
17 Sep – 30 Oct

DAVID WILLIAMSON'S

NEARER THE GODS

Term 4

2 Nov – 24 Dec



TERM 2
23 APR – 5 JUN

BY JOANNA MURRAY-SMITH

HONOUR

DIRECTOR
KATE CHAMPION

CAST
AYEESHA ASH
LUCY BELL
HUW HIGGINSON
POPPY LYNCH

Honor (Lucy Bell, MARJORIE PRIME) and George (Huw Higginson, THE KITCHEN SINK) have been married for 32 years and, as in all good marriages, have made some compromises along the way. While George forged his career as a writer, Honor left a promising literary career of her own and dived into motherhood with no regrets. Their world seems unshakeable until young tenacious Claudia arrives on the scene and disrupts the equilibrium of their seemingly perfect lives.

Fascinating, illuminating and funny, Joanna Murray-Smith subtly cracks open the complexities of a modern relationship from every angle, laying bare our capacity to love, hurt and deceive those around us. A talented ensemble bring the intergenerational differences to light in this thrilling and insightful modern Australian classic.

RUNNING TIME APPROX.
90 MINS NO INTERVAL

REC. AGES 14+

STRONG LANGUAGE

SPECIAL PERFORMANCE DATES

FRI 7 MAY, 8.15pm – Q&A
THU 27 MAY, 11am – Audio Described
SAT 29 MAY, 4.30pm – Audio Described
TUE 1 JUN, 11am – Q&A
WED 2 JUN, 7.30pm – Free Teen Night

CURRICULUM LINKS

SUITABLE FOR YEARS 10 - 12

DRAMA

Stage 6

- Year 12: The Voice of Women in Theatre
Outcomes: H3.1, H3.2, H3.3
Note: Joanna Murray-Smith's Female of the Species is a suggested text in The Voice of Women in Theatre. Attendance at Honour may provide Year 12 students with a valuable experience of Murray-Smith's work.
- Year 11: Theatrical Traditions and Performance Styles (Australian Realism)
Outcomes:
 - Making: P1.3, P1.4, P1.6
 - Performing: P2.4, P2.6
 - Critically Studying: P3.1, P3.2, P3.3, P3.4

Stage 5

- Compulsory Study of Theatrical Form/Style (Australian Realism and Voice of Women)
Outcomes:
 - Making: 5.1.3, 5.1.4
 - Performing: 5.2.1, 5.2.3
 - Appreciating: 5.3.1, 5.3.2, 5.3.3

ENGLISH

Stage 6

- English Advanced Year 11 Module B: Critical Study of Literature
Outcomes: 3, 5, 7, 8
Across the stage, the selection of texts must give students experience of:
 - texts which are widely

regarded as quality literature

- a widely defined Australian literature, including texts that give insights into Aboriginal experiences in Australia

- a wide range of literary texts from other countries and times, including poetry, drama scripts, prose fiction and picture books

- English Standard Year 11 Module B: Close Study of Literature
Outcomes: 3, 5, 8
Students are required to study ONE substantial literary print text in Module B, for example, prose fiction, drama or a poetry text, which may constitute a selection of poems from the work of one poet.
Students must study a range of text types drawn from prose fiction, drama, poetry, nonfiction, film, media and digital texts.

Stage 5


- Study of Drama
Outcomes: 1, 3, 5, 7, 8

GENERAL CAPABILITIES

- Literacy
- Ethical understanding
- Critical and creative thinking
- Personal and social capability
- Difference and diversity

ISSUES & CONCERNS/KEY IDEAS

- Family
- Relationships
- Gender politics
- Intergenerational conflict



TERM 2 & 3
11 JUN – 24 JUL

BY SUSAN HILL AND
STEPHEN MALLATRATT

THE WOMAN IN BLACK

DIRECTOR
MARK KILMURRY

CAST
GARTH HOLCOMBE
JAMIE OXENBOULD

This season, one of the most thrilling and long-running plays in West End history makes its way to the close quarters of Ensemble's intimate stage.

Mr Kipps (Jamie Oxenbould, *BABY DOLL*) is troubled by disturbing memories of his journey to fog bound Eel Marsh, where Mrs Drablow's lonely house stands in isolation. Trapped by the fog, he witnessed mysterious events he would rather forget, but cannot. In desperation, he enlists the help of an actor (Garth Holcombe, *TRIBES*) to tell his tale and exorcise the demons that haunt his dreams. As the two men become immersed in Kipps' story, eerie events materialise from the mists of the past and begin to haunt the present.

Susan Hill's classic ghost story, adapted for stage by Stephen Mallatratt, will have you watching through your fingers, laughing out loud, and gasping at the spooky twists in an unforgettable theatrical experience.

RUNNING TIME APPROX.
2 HRS INCL. INTERVAL

REC. AGES 12+

SPECIAL PERFORMANCE DATES

FRI 25 JUN, 8.15pm – Q&A
THU 15 JUL, 11am – Audio Described
SAT 17 JUL, 4.30pm – Audio Described
TUE 20 JUL, 11am – Q&A
WED 21 JUL, 7.30pm – Free Teen Night

CURRICULUM LINKS

SUITABLE FOR YEARS 9 - 12

Note: Use of Gothic/Horror conventions may mean that not all Year 9 students may find this work accessible.

DRAMA

Stage 6

- Year 11: Theatrical Traditions and Performance Styles (Melodrama, Brechtian Theatre, Gothic influences)
Outcomes:
 - Making: P1.3, P1.4, P1.6
 - Performing: P2.4, P2.6
 - Critically Studying: P3.1, P3.2, P3.3, P3.4

Stage 5

- Compulsory Study of Theatrical Form/Style (Melodrama, Brechtian Theatre, Gothic influences)
Outcomes:
 - Making: 5.1.3, 5.1.4
 - Performing: 5.2.1, 5.2.3
 - Appreciating: 5.3.1, 5.3.2, 5.3.3

ENGLISH

Stage 6

- English Standard Year 11
Module B: Close Study of Literature.
Outcomes: 3, 5, 8
Students are required to study ONE substantial literary print text in Module B, for example, prose fiction, drama or a poetry text, which may constitute a selection of poems from the work of one poet.

Students must study a range of text types drawn from prose fiction, drama, poetry, nonfiction, film, media and digital texts.

Stage 5

- Study of Drama (at least 2 works and could include the play script and film study)
Outcomes: 1, 3, 5, 8
Across the stage, the selection of texts must give students experience of:
 - texts which are widely regarded as quality literature
 - a wide range of literary texts from other countries and times, including poetry, drama scripts, prose fiction and picture books

GENERAL CAPABILITIES

- Literacy
- Ethical understanding
- Critical and creative thinking
- Personal and social capability
- Difference and diversity

ISSUES & CONCERNS/KEY IDEAS

- Fear and the unknown
- Metatheatricality and actor/audience relationship
- Grief and loss

TERM 3 & 4
17 SEP – 30 OCT

BY YASMINA REZA
TRANSLATED BY
CHRISTOPHER HAMPTON

ART

DIRECTOR
MARK KILMURRY

CAST
ANDREW HANSEN
CRAIG REUCASSEL
CHRIS TAYLOR

Successful dermatologist Serge has a penchant for modern art – and he's got the receipt to prove it.

After forking out an outrageous sum of money for an obscure 'Antrios' painting, he is desperate to show it off to his friends Marc and Yvan. But where Serge sees a masterpiece, Marc sees money out the window and perpetually on-the-fence Yvan can't seem to make up his mind either way. Divided by the canvas, a wicked battle of the wits unfolds threatening to unravel their friendship as insults and innuendos go from the painting to the personal.

From the pen of French playwright Yasmina Reza, this Tony Award-winning comedy paints a side-splitting portrait of the meaning of art and friendship. Following the success of NEVILLE'S ISLAND, Artistic Director Mark Kilmurry once again joins forces with The Chaser's Andrew Hansen, Craig Reucassel and Chris Taylor to deliver the laughs in this infuriatingly hilarious modern work of art.

RUNNING TIME APPROX.
90 MINS NO INTERVAL

REC. AGES 14+

STRONG LANGUAGE

SPECIAL PERFORMANCE DATES

FRI 1 OCT, 8.15pm – Q&A
THU 21 OCT, 11am – Audio Described
SAT 23 OCT, 4.30pm – Audio Described
TUE 26 OCT, 11am – Q&A
WED 27 OCT, 7.30pm – Free Teen Night

CURRICULUM LINKS

SUITABLE FOR YEARS 10 - 12

DRAMA

Stage 6

- Year 11: Theatrical Traditions and Performance Styles (Realism)
Outcomes:
 - Making: P1.3, P1.4, P1.6
 - Performing: P2.4, P2.6
 - Critically Studying: P3.1, P3.2, P3.3, P3.4

Stage 5

- Compulsory Study of Theatrical Form/Style (Realism)
Outcomes:
 - Making: 5.1.3, 5.1.4
 - Performing: 5.2.1, 5.2.3
 - Appreciating: 5.3.1, 5.3.2, 5.3.3

ENGLISH

Stage 6

- English Standard Year 11
Module B: Close Study of Literature
Outcomes: 3, 5, 8
Students are required to study ONE substantial literary print text in Module B, for example, prose fiction, drama or a poetry text, which may constitute a selection of poems from the work of one poet.
Students must study a range of text types drawn from prose fiction, drama, poetry, nonfiction, film, media and digital texts.

GENERAL CAPABILITIES

- Literacy
- Ethical understanding
- Critical and creative thinking
- Personal and social capability
- Difference and diversity

ISSUES & CONCERNS/KEY IDEAS

- Male friendship
- Clash of modern and postmodern paradigms
- Artistic and aesthetic values
- Class



TERM 4
2 NOV – 24 DEC

DAVID WILLIAMSON'S

NEARER THE GODS

DIRECTOR
JANINE WATSON

CAST INCLUDES
DEBORAH AN
ROWAN DAVIE
MANDELA MATHIA
KENNETH MORALED A
SEAN O'SHEA
SAM O'SULLIVAN

Petty politics, inflated egos, and fierce rivalries almost jeopardise one of the greatest discoveries in human advancement; Sir Isaac Newton's laws of motion. With his trademark wit and sharp observations, David Williamson exposes the abrasive personalities of revered scientific giants – even geniuses are not infallible.

Under the orders of pompous King Charles II (Sean O'Shea, THE RASPUTIN AFFAIR), determined young astronomer Edmund Halley (Rowan Davie) must wrangle the secrets of the universe from the brain of capricious and contrary Newton.

It may be 1684, the Dawn of Enlightenment, but Williamson's comic re-imagining through a contemporary lens puts the focus firmly on the human tale of rivalry and discovery, of personal trials against a corrupt establishment, of self-doubt versus arrogance, and faith versus reason. NEARER THE GODS is a gripping and blackly funny drama about how one of the greatest moments of scientific illumination almost didn't happen.

RUNNING TIME APPROX.
2 HRS 10 MINS INCL. INTERVAL

REC. AGES 12+

SPECIAL PERFORMANCE DATES

FRI 1 OCT, 8.15pm – Q&A
THU 21 OCT, 11am – Audio Described
SAT 23 OCT, 4.30pm – Audio Described
TUE 26 OCT, 11am – Q&A
WED 27 OCT, 7.30pm – Free Teen Night

CURRICULUM LINKS SUITABLE FOR YEARS 10 - 12

DRAMA

Stage 6

- Theatrical Traditions and Performance Styles (Realism)
Outcomes:
 - Making: P1.1, P1.2, P1.3, P1.4, P1.6
 - Performing: P2.3, P2.4
 - Critically Studying: P3.1, P3.2, P3.3, P3.4

Stage 5

- Compulsory Study of Theatrical Form/Style (Realism)
Outcomes:
 - Making: 5.1.3, 5.1.4
 - Performing: 5.2.1, 5.2.3
 - Appreciating: 5.3.1, 5.3.2, 5.3.3

ENGLISH

Stage 6

- Year 11 Advanced English: Narratives that Shape Our World
Outcome: 5, 7, 8

Stage 5

- Study of Drama (at least 2 works)
Outcomes: 1, 3, 5, 8
Across the stage, the selection of texts must give students experience of:
 - texts which are widely regarded as quality literature

- a wide range of literary texts from other countries and times, including poetry, drama scripts, prose fiction and picture books

GENERAL CAPABILITIES

- Literacy
- Ethical understanding
- Critical and creative thinking
- Personal and social capability
- Difference and diversity

ISSUES & CONCERNS/KEY IDEAS

- Rationality and faith
- Mathematics and meaning
- Ambition and legacy

Note: This play could also be the basis of an interdisciplinary unit of study. Suggestions include Drama, Science, Maths and Studies of Religion.



STEP BEHIND THE SCENES

Keen to find out more about the plays or experience what goes on behind-the-scenes? Join us at our insightful audience events throughout the year.

DIRECTOR AT WORK

As part of a small group, witness our skilled directors at work in rehearsal and discover how a play is brought to life.

HONOUR

with Kate Champion
THU 1 APR, 3.30pm

THE WOMAN IN BLACK

with Mark Kilmurry
THU 20 MAY, 3.30pm

NEARER THE GODS

with Janine Watson
THU 14 OCT, 3.30pm

POST-SHOW Q&A

Join an engaging conversation about the play with the cast and director. Simply purchase tickets to a Q&A performance and stay seated after the show. Sessions are marked in the performance calendar and on our website.

YOUTH THEATRE PACK

Using a NSW Government's Creative Kids Voucher, kids can experience 3 plays at select performances throughout the year, each followed by a Q&A



session, with our Youth Theatre Pack. It's a great opportunity to let kids explore their passion for the performing arts and learn more about the behind-the-scenes process. You'll save on under 30s prices and discounted parent packs are available too. For more info, visit ensemble.com.au/education

FREE TEEN NIGHTS

To give more young adults the opportunity to experience live theatre, at select performances we offer one complimentary ticket for a 13 – 19 year old when booked alongside one adult ticket.

ENSEMBLE ED OUTREACH PROGRAM

Our Ensemble Ed Outreach Program, now in its sixth year, invites schools across Australia to share the Ensemble magic. Whether it's attending a dedicated education performance or viewing a livestreamed play in the classroom, this is often the first time students have the opportunity to experience the thrill of live theatre.

"For most of our students, a trip to the theatre is far removed from their everyday lives. Many of them are not able to afford it and when an opportunity like this presents itself, they are led into a world of performance and theatre they could never have imagined. Thank you for providing us this wonderful opportunity."

Celeste Fernandes English Teacher,
Sarah Redfern High School

LIVESTREAMING THEATRE TO REGIONAL AUSTRALIA

Our livestreaming program broadcasts plays directly from the theatre into the classroom, reaching schools in regional and remote locations across Australia. The program launched in 2019 with ten regional schools tuning into a livestreamed performance

of THE APPLETON LADIES' POTATO RACE followed by the opportunity to ask cast and creatives live questions. We'll be offering this unique online experience again with NEARER THE GODS as we aim to reach more students across the country.

ENSEMBLE ED GROWS WITH THE SMITH FAMILY

We're proud to announce an exciting new partnership with The Smith Family. As part of their SmArts education program, we'll be working closely together to provide students with unique access and learning opportunities within the theatre.



PRICING

MAIN STAGE PLAYS

Student/Teacher* tickets \$25

DIRECTOR AT WORK

Student/Teacher* \$35

*One teacher attends for free for every 12 paying students.

HOW TO BOOK

ONLINE

Complete the online booking form available at ensemble.com.au/education

PHONE

Give us a call on (02) 8918 3400.

PAPER BOOKING FORM

Print out and fill in the attached booking form and return to us by:

Post

Ensemble Theatre Education
78 McDougall Street
Kirribilli
NSW 2061

Email

boxoffice@ensemble.com.au

In Person

Feel free to drop by the theatre and bring us your form.



EDUCATION BOOKING FORM 2021

CONTACT INFORMATION

SCHOOL:

SCHOOL ADDRESS:

SUBURB:

STATE:

POSTCODE:

BOOKING TEACHER:

MOBILE:

DEPARTMENT/POSITION:

EMAIL:

FAX:

ACCOUNTS DEPARTMENT CONTACT:

TELEPHONE:

EMAIL:

FAX:

CHOOSE PLAYS AND DATES

PLAYS \$25 PER TICKET	1st CHOICE DATE & TIME	2nd CHOICE DATE & TIME	NO. STUDENT TICKETS	NO. TEACHER TICKETS	NO. FREE TEACHER TICKETS*	TOTAL TIX	TOTAL
HONOUR							\$
THE WOMAN IN BLACK							\$
ART							\$
NEARER THE GODS							\$
DIRECTOR AT WORK SESSIONS \$35 PER TICKET			NO. STUDENT	NO. TEACHER	NO. FREE TEACHER TICKETS*	TOTAL TIX	TOTAL
HONOUR with Kate Champion THU 1 APR, 3.30pm							\$
THE WOMAN IN BLACK with Mark Kilmurry THU 20 MAY, 3.30pm							\$
NEARER THE GODS with Janine Watson THU 14 OCT, 3.30pm							\$
GRAND TOTAL:							\$

TERM AND CONDITIONS | DEPOSIT DUE 3 WEEKS AFTER CONFIRMATION

- *One teacher attends for free for every 12 paying students.
- 20% deposit is required within 3 weeks of making the reservation
- Changes to student numbers must be in writing and no later than 3 weeks prior to performance.
- Final payment is due 3 weeks prior to the performance
- Changes to student numbers after this time are at the discretion of Ensemble Theatre and subject to availability.
- The booking is made on behalf of the school and the school accepts liability to make payments on due dates.
- Completed forms to be returned to Ensemble Theatre.

SIGNATURE | I HAVE READ AND AGREE TO THE TERMS & CONDITIONS STATED IN THIS BOOKING FORM

SIGNATURE:

NAME:

DATE:

COMPLETED FORMS & ENQUIRIES TO:

CALL (02) 8918 3400

POST Ensemble Theatre, 78 McDougall Street, Kirribilli, NSW 2061

EMAIL boxoffice@ensemble.com.au