



FOR EVERYONE

**2019
EDUCATION**





THE BIG TIME

TERM 1

18 JAN – 16 MAR

DIPLOMACY

TERM 2

21 JUN – 13 JUL

A VIEW FROM THE BRIDGE

TERM 3

18 JUL – 24 AUG

THE LAST WIFE

TERM 3

30 AUG – 29 SEP

BABY DOLL

TERM 4

18 OCT – 16 NOV

Welcome to Ensemble Theatre's 2019 season

Education is a huge part of our forward planning here at Ensemble and introducing young adults to the unique experience of live theatre is something we treasure. Our hope is that a play brought to life by the best of creative talent will engage students and teachers in lively conversations long after the actors have taken their bows. Thank you for choosing Ensemble Theatre and I believe each and every play in this season will provoke, engage and entertain.

Mark Kilmurry
Artistic Director

DAVID WILLIAMSON'S

THE BIG TIME

DIRECTOR **MARK KILMURRY**

CAST INCLUDES
CLAUDIA BARRIE
ZOE CARIDES
AILEEN HUYNH
MATT MINTO
JEREMY WATERS

TERM 1 18 JAN - 16 MAR

DAVID WILLIAMSON'S

THE BIG TIME

WORLD PREMIERE

Celia and Vicki were best friends at drama school, but the game of life has dealt them very different hands. Celia is a high profile soap star earning ridiculous amounts of money and the requisite harbourside views. Meanwhile Vicki is scraping by in gritty, critically acclaimed roles in independent theatre.

When Vicki proposes they collaborate on an ambitious new film project, it could be a big opportunity for both of them to prove their mettle in the industry. But are Vicki's motives as well-intentioned as they seem, or will jealousy rear its ugly head?

David Williamson's trademark satirical pen finds razor-sharp form in this clever, stylish and sophisticated comedy set in the ruthless world of celebrity.

RUNNING TIME APPROX. 2 HRS
INCL. INTERVAL

SUITABLE FOR YEARS 10 - 12

STRONG LANGUAGE

RECOMMENDED DATES

FEBRUARY		S	2 March 8.15pm
Th	14 Feb 8.15pm	T	5 March 7.30pm AD
F	15 Feb 8.15pm	W	6 March 7.30pm
S	16 Feb 8.15pm	Th	7 March 11am AD
T	19 Feb 7.30pm	Th	7 March 8.15pm
W	20 Feb 7.30pm	F	8 March 8.15pm
Th	21 Feb 8.15pm	S	9 March 4.30pm AD
F	22 Feb 8.15pm	T	12 March 7.30pm
S	23 Feb 8.15pm	W	13 March 7.30pm
T	26 Feb 7.30pm	Th	14 March 11am
W	27 Feb 7.30pm	Th	14 March 8.15pm
Th	28 Feb 8.15pm	F	15 March 8.15pm
MARCH		S	16 March 4.30pm
F	1 March 8.15pm	S	16 March 8.15pm
S	2 March 4.30pm		

AD - Audio Described

CURRICULUM LINKS

DRAMA

Stage 6

- Australian Drama and Theatre (Core Topic)
(Outcomes: H3.1, H3.2, H3.3)
- Theatrical Traditions and Performance Styles (Australian Realism)
(Outcomes: Making: P1.3, P1.4, P1.6
Performing: P2.4, P2.6
Critically Studying: P3.1, P3.2, P3.3, P3.4)

Stage 5

- Compulsory Study of Theatrical Form/Style (Australian Realism)
(Making: 5.1.3, 5.1.4
Performing: 5.2.1, 5.2.3
Appreciating: 5.3.1, 5.3.2, 5.3.3)

ENGLISH

Stage 6

- English Advanced Year 11 Module B: Critical Study of Literature
(Outcomes 3, 5, 7, 8)

Stage 5

- Study of Drama (at least 2 works)
(Outcomes 1, 3, 5 and 8)

CROSS CURRICULUM LINKS WITH DRAMA SYLLABUS

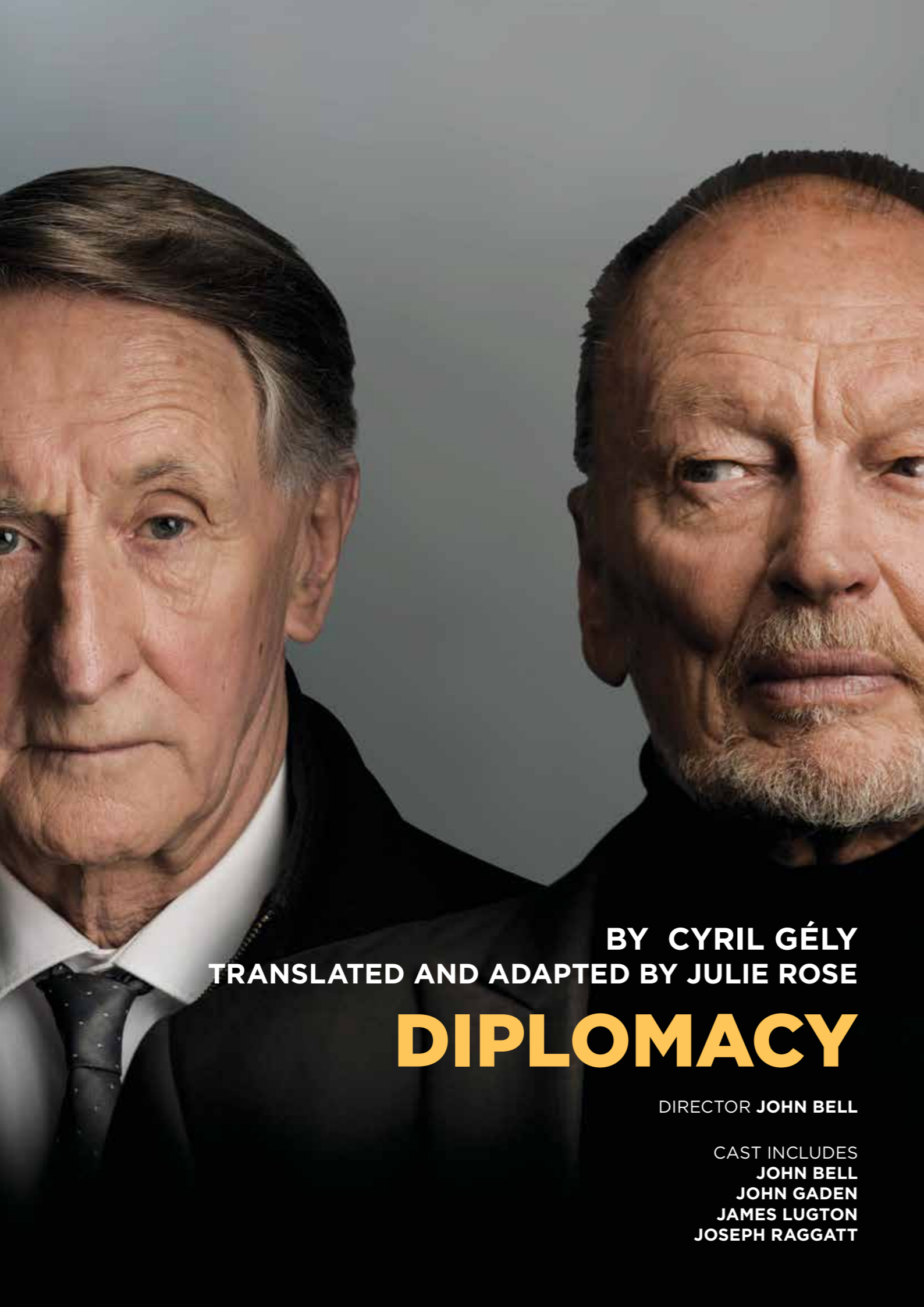
- Civics and Citizenship
- Gender

Key Competencies

- Collecting, analysing and organising information
- Communicating ideas and information
- Planning and organising activities
- Literacy

Issues and Concerns/Key Ideas

- Celebrity
- Class
- Gender Relationships



BY CYRIL GÉLY
TRANSLATED AND ADAPTED BY JULIE ROSE

DIPLOMACY

DIRECTOR **JOHN BELL**

CAST INCLUDES
JOHN BELL
JOHN GADEN
JAMES LUGTON
JOSEPH RAGGATT

TERM 2 21 JUN - 13 JUL

BY **CYRIL GÉLY**
TRANSLATED AND ADAPTED BY **JULIE ROSE**

DIPLOMACY

RETURN SEASON

Returning to the Ensemble Theatre stage after the unprecedented success of our sold out 2018 season, theatre legends John Bell and John Gaden reprise their roles in this unmissable production.

In 1944 at the Hôtel Meurice, the Swedish diplomat Raoul Nordling and the German General, Dietrich von Choltitz meet in a life and death situation for the city of Paris.

On abandoning Paris, Hitler has ordered its destruction. Raoul has one night to persuade the General to leave the landmark city standing. The many twists and turns of their negotiations play out in this highly entertaining thriller by Cyril Gély.

RUNNING TIME APPROX. 70 MINS
NO INTERVAL

SUITABLE FOR YEARS 10 - 12

“It is difficult to imagine a play with higher stakes than this... gripping”
The Australian

RECOMMENDED DATES

JUNE	F	28 June 8.15pm	
F	21 June 8.15pm P	S	29 June 2pm
S	22 June 2pm P	Su	30 June 5pm
S	22 June 5pm P	JULY	
Su	23 June 2pm	T	2 July 8.15pm
T	25 June 11am	W	3 July 8.15pm Q&A
T	25 June 6pm	Th	4 July 8.15pm
Th	27 June 11am	F	5 July 11am
Th	27 June 6pm	F	5 July 6pm

P - Preview **Q&A** - Question and Answer

CURRICULUM LINKS

DRAMA

Stage 6

- Theatrical Traditions and Performance Styles (Realism)
(Outcomes;
Making: P1.3, P1.4, P1.6
Performing: P2.4, P2.6
Critically Studying P3.1, P3.2, P3.3)

Stage 5

- Compulsory Study of Theatrical Form/ Style (Australian Realism)
(Outcomes;
Making: 5.1.3, 5.1.4
Performing: 5.2.1, 5.2.3
Appreciating: 5.3.1, 5.3.2, 5.3.3)

ENGLISH

Stage 6

- Year 11 Advanced English: Narratives that Shape Our World

Stage 5

- Study of Drama (at least 2 works)
(Outcomes 1, 3, 5 and 8)

HISTORY

Stage 6

- Core Study: Power and Authority in the Modern World 1919 – 1946
(Outcomes: MH 12 – 3, MH 12 – 4, MH12 – 5)

Stage 5

- Link to Depth Study 3: Australia at War WW1 and WWII (Mandatory Study)
(Outcomes: HT5 4, HT5-7)

CROSS CURRICULUM LINKS WITH DRAMA SYLLABUS

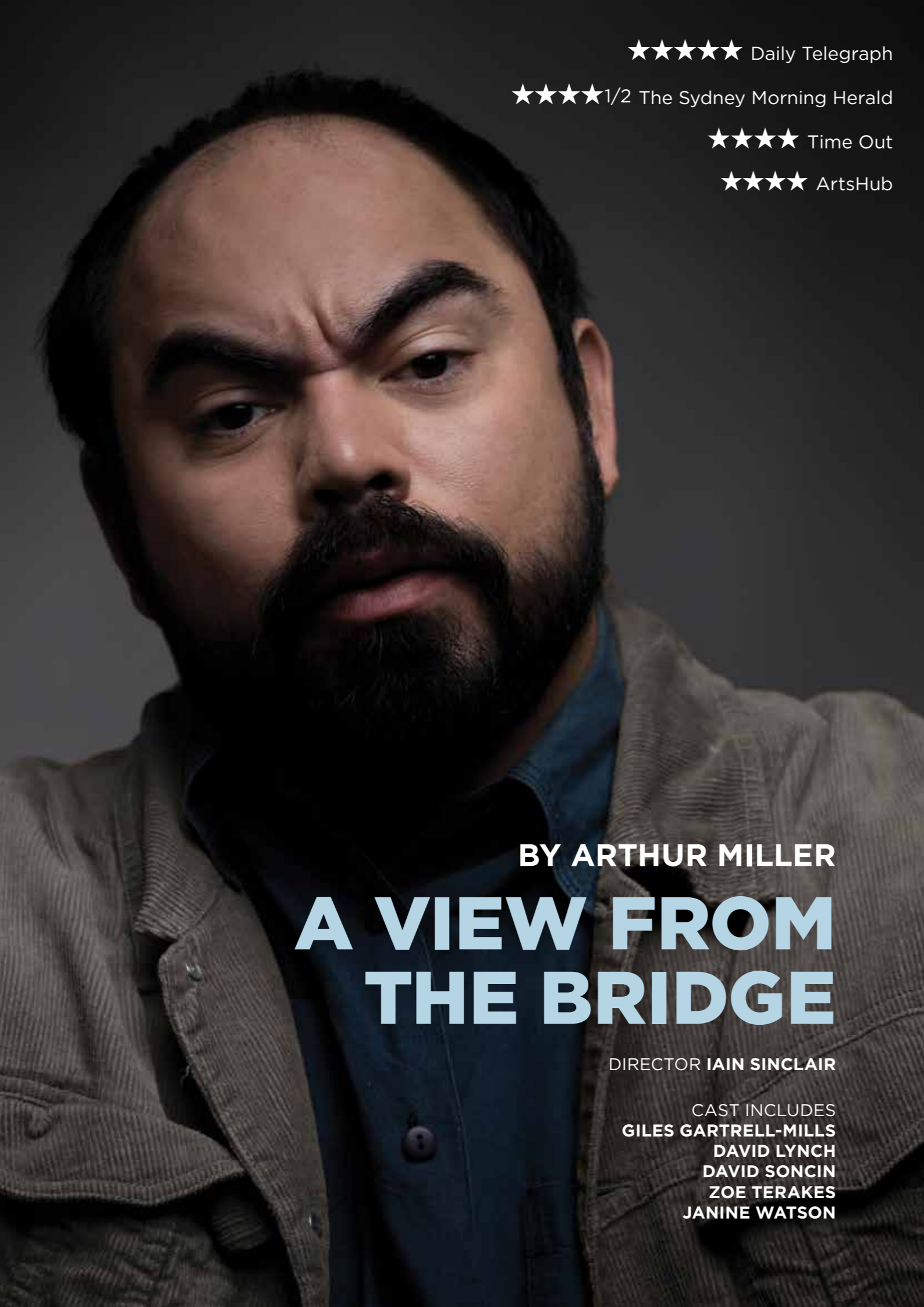
- Civics and Citizenship
- Gender

Key Competencies

- Collecting, analysing and organising information
- Communicating ideas and information
- Planning and organising activities
- Literacy

Issues and Concerns/Key Ideas

- Justice
- Power and authority



★★★★★ Daily Telegraph

★★★★★ 1/2 The Sydney Morning Herald

★★★★★ Time Out

★★★★★ ArtsHub

BY ARTHUR MILLER

A VIEW FROM THE BRIDGE

DIRECTOR IAIN SINCLAIR

CAST INCLUDES
GILES GARTRELL-MILLS
DAVID LYNCH
DAVID SONCIN
ZOE TERAKES
JANINE WATSON

TERM 3 18 JUL - 24 AUG

BY ARTHUR MILLER

A VIEW FROM THE BRIDGE

Italian-American immigrant life colours this searing drama of love and revenge set in 1950's Brooklyn. Eddie Carbone is devoted to his wife Beatrice and his niece Catherine. Beatrice's cousins Marco and Rodolpho, having fled the poverty of Sicily, enter the US illegally, desperate to find work. As Rodolpho and Catherine fall in love, Eddie's devotion to his niece is no longer touching, but terrifying.

After a smash hit, sold out season at the Old Fitz Theatre, we are thrilled to reunite this award-winning team on the Ensemble Theatre stage.

RUNNING TIME APPROX. 2 HRS
NO INTERVAL

SUITABLE FOR YEARS 10 - 12

Winner of Best Independent Production, Best Male Actor, Best Supporting Female Actor & Best Newcomer, 2017 Sydney Theatre Awards.

Originally produced by Red Line Productions at the Old Fitz Theatre in 2017.

RECOMMENDED DATES

JULY

Th 18 July 8.15pm P	S 10 Aug 8.15pm
F 19 July 8.15pm P	T 13 Aug 11am
T 23 July 7.30pm P	T 13 Aug 7.30pm
Th 25 July 8.15pm	W 14 Aug 7.30pm
F 26 July 8.15pm	Th 15 Aug 11am
S 27 July 8.15pm	Th 15 Aug 8.15pm
T 30 July 7.30pm	F 16 Aug 8.15pm
W 31 July 7.30pm	S 17 Aug 4.30pm

AUGUST

Th 1 Aug 8.15pm	T 20 Aug 11am
F 2 Aug 8.15pm Q&A	T 20 Aug 7.30pm
S 3 Aug 8.15pm	W 21 Aug 7.30pm
T 6 Aug 7.30pm AD	Th 22 Aug 11am Q&A
W 7 Aug 7.30pm	Th 22 Aug 8.15pm
Th 8 Aug 8.15pm	F 23 Aug 8.15pm
F 9 Aug 8.15pm	S 24 Aug 4.30pm
S 10 Aug 4.30pm AD	S 24 Aug 8.15pm

P - Preview **AD** - Audio Described **Q&A** - Question and Answer

CURRICULUM LINKS

DRAMA

Stage 6

- Theatrical Traditions and Performance Styles (American Tragedy) (Outcomes: Making: P1.3, P1.4, P1.6 Performing: P2.4, P2.6 Critically Studying: P3.1, P3.2, P3.3)

Stage 5

- Compulsory Study of Theatrical Form/Style (American Tragedy) (Making: 5.1.3, 5.1.4 Performing: 5.2.1, 5.2.3 Appreciating: 5.3.1, 5.3.2, 5.3.3)

ENGLISH

Stage 6

- Year 11 Common Module: Texts and Human Experiences (Outcomes 3, 5, 7, 8)

Stage 5

- Study of Drama (at least 2 works) (Outcomes 1, 3, 5 and 8)

Note: English teachers may wish to study this text in Year 10 in preparation for Arthur Miller's The Crucible, a text set for study in the HSC Advanced and Standard English Course.

HISTORY

Stage 6

- Core Study: Power and Authority in the Modern World 1919 - 1946 (Outcomes: MH 12 - 3, MH 12 - 4, MH12 - 5)

Stage 5

- Link to Depth Study 3: Australia at War WW1 and WWII (Mandatory Study) (Outcomes: HT5 4, HT5-7)

CROSS CURRICULUM LINKS

WITH DRAMA SYLLABUS

- Civics and Citizenship
- Difference and Diversity
- Gender

Key Competencies

- Collecting, analysing and organising information
- Communicating ideas and information
- Planning and organising activities
- Literacy

Issues and Concerns/Key Ideas

- New world vs. Old world
- Codes of Honour
- Love, Sexuality and Jealousy
- Planning and organising activities
- Literacy



BY KATE HENNIG

THE LAST WIFE

DIRECTOR MARK KILMURRY

CAST INCLUDES
EMMA CHELSEY
EMMA HARVIE
HUW HIGGINSON
SIMON LONDON
NIKKI SHIELS
URSULA YOVICH

TERM 3 30 AUG - 29 SEP

BY KATE HENNIG

THE LAST WIFE

AUSTRALIAN PREMIERE

In a deadly game of power, intrigue and passion, Kate Parr must live by her wits if she wants to avoid becoming another statistic on Henry's growing list of dead wives. With stepdaughters, step-sisters and the very crown at stake, it will take a woman of immense courage to initiate change.

Can Kate remain steadfast as she navigates the treacherous waters of gender politics, or will she succumb to the might of Henry's increasing paranoia?

Kate Hennig's stunning debut play reimagines the dangerous sparring between Henry VIII and Katherine Parr through a richly provocative contemporary lens. Huw Higginson (THE KITCHEN SINK) and Ursula Yovich (STC's THE SECRET RIVER) join an accomplished ensemble cast in a tale that is at once funny, seductive and deliciously thrilling.

RUNNING TIME APPROX. 2 HRS 30 MINS
INCL. INTERVAL

SUITABLE FOR YEARS 10 - 12

STRONG LANGUAGE AND ADULT THEMES

RECOMMENDED DATES

AUGUST

F 30 Aug 8.15pm **P**

S 31 Aug 8.15pm **P**

SEPTEMBER

T 3 Sep 7.30pm

F 6 Sep 8.15pm

S 7 Sep 8.15pm

T 10 Sep 7.30pm

W 11 Sep 7.30pm

Th 12 Sep 8.15pm

S 14 Sep 8.15pm

T 17 Sep 7.30pm

W 18 Sep 7.30pm

Th 19 Sep 8.15pm

F 20 Sep 8.15pm

S 21 Sep 4pm

S 21 Sep 8.15pm

T 24 Sep 7.30pm

W 25 Sep 7.30pm **AD**

Th 26 Sep 8.15pm

F 27 Sep 8.15pm

S 28 Sep 4pm **AD**

S 28 Sep 8.15pm

Su 29 Sep 5pm

P - Preview **AD** - Audio Described

CURRICULUM LINKS

DRAMA

Stage 6

- Theatrical Traditions and Performance Styles (Realism)
(Outcomes;
Making: P1.3, P1.4, P1.6
Performing: P2.4, P2.6
Critically Studying P3.1, P3.2, P3.3)

Stage 5

- Compulsory Study of Theatrical Form/Style (Australian Realism)
(Outcomes;
Making: 5.1.3, 5.1.4
Performing: 5.2.1, 5.2.3
Appreciating: 5.3.1, 5.3.2, 5.3.3)

ENGLISH

Stage 6

- English Advanced Year 11 Module B: Critical Study of Literature
(Outcomes 3, 5, 7, 8)

Stage 5

- Study of Drama (at least 2 works)
(Outcomes 1, 3, 5 and 8)

HISTORY (ELECTIVE)

Stages 4 - 5

- Topic 2: Ancient, Medieval and Early Modern Societies

CROSS CURRICULUM LINKS

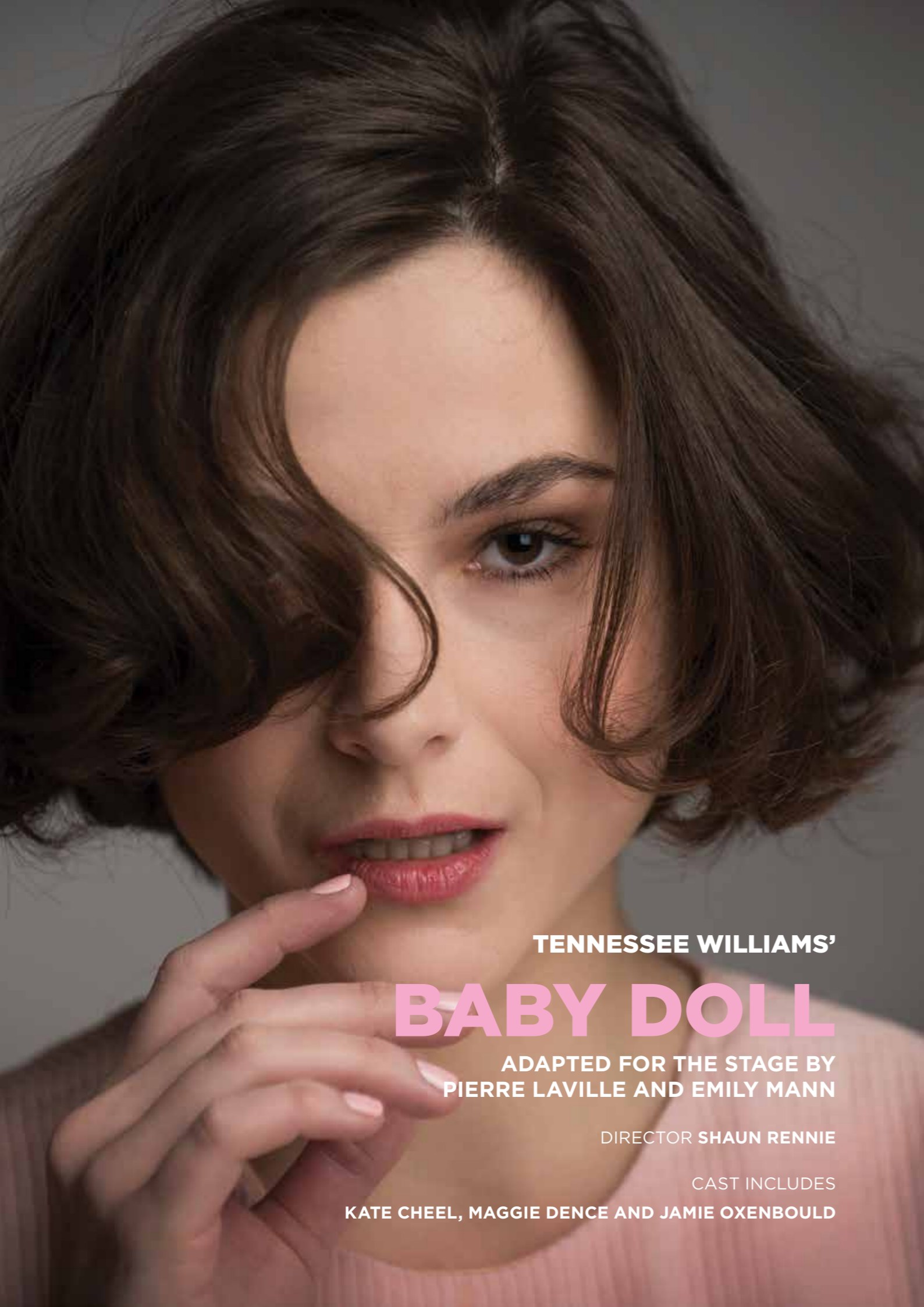
- Civics and Citizenship
- Gender

Key Competencies

- Collecting, analysing and organising information
- Communicating ideas and information
- Planning and organising activities
- Literacy

Issues and Concerns/Key Ideas

- Power
- Patriarchy
- Sexual Politics



TENNESSEE WILLIAMS'

BABY DOLL

ADAPTED FOR THE STAGE BY
PIERRE LAVILLE AND EMILY MANN

DIRECTOR SHAUN RENNIE

CAST INCLUDES

KATE CHEEL, MAGGIE DENCE AND JAMIE OXENBOULD

TERM 4 18 OCT - 16 NOV

TENNESSEE WILLIAMS'

BABY DOLL

ADAPTED FOR THE STAGE BY
PIERRE LAVILLE AND EMILY MANN

AUSTRALIAN PREMIERE

Heat and desire sizzle in every line of Tennessee Williams' Deep South tale of lust, jealousy and betrayal.

Down-on-his-luck Archie Lee is obsessed with his young bride, Baby Doll, but Baby is keeping her husband on a long leash. When the neighbouring cotton gin is burnt to the ground, dangerously charismatic Silva Vacarro pays them a visit, suspicious that Archie is to blame. In the steamy hours that follow, power and passion come irresistibly to the fore as a game of truth or dare plays out.

Peppered with wry humour and sultry comedy, this brand new adaptation breathes fresh life into a beautifully crafted tale by one of the greatest playwrights of the 20th century.

RUNNING TIME APPROX. 90 MINS
NO INTERVAL

SUITABLE FOR YEARS 10 - 12

ADULT THEMES

RECOMMENDED DATES

OCTOBER

F 18 Oct 8.15pm **P**
S 19 Oct 2pm **P**
T 22 Oct 6.15pm
Th 24 Oct 6.15pm
S 26 Oct 2pm
T 29 Oct 8.15pm

NOVEMBER

F 1 Nov 11am
F 1 Nov 6.15pm
T 5 Nov 6.15pm
W 6 Nov 11am
W 6 Nov 6.15pm
S 9 Nov 2pm
T 12 Nov 8.15pm **AD**

P - Preview **AD** - Audio Described

CURRICULUM LINKS

DRAMA

Stage 6

- Theatrical Traditions and Performance Styles (American Realism) (Outcomes: Making: P1.3, P1.4, P1.6 Performing: P2.4, P2.6 Critically Studying: P3.1, P3.2, P3.3)

Stage 5

- Compulsory Study of Theatrical Form/Style (American Realism) (Making: 5.1.3, 5.1.4 Performing: 5.2.1, 5.2.3 Appreciating: 5.3.1, 5.3.2, 5.3.3)

ENGLISH

Stage 6

- English Advanced Year 11 Module B: Critical Study of Literature (Outcomes 3, 5, 7, 8)

Stage 5

- Study of Drama (at least 2 works) (Outcomes 1, 3, 5 and 8)

Note: English teachers may use this text as a comparative study of film and theatre.

HISTORY

Stage 6

- Core Study: Power and Authority in the Modern World 1919 - 1946 (Outcomes: MH 12 - 3, MH 12 - 4, MH12 - 5)

Stage 5

- Link to Depth Study 3: Australia at War WW1 and WWII (Mandatory Study) (Outcomes: HT5 4, HT5-7)

CROSS CURRICULUM LINKS WITH DRAMA SYLLABUS

- Gender

Key Competencies

- Collecting, analysing and organising information
- Communicating ideas and information
- Planning and organising activities
- Literacy

Issues and Concerns/Key Ideas

- Gender Roles
- Sexual Politics
- Female Sexuality

BOATSHED

DEVELOPMENT

Boatshed – Ensemble Development is the home for new work at Ensemble Theatre. Boatshed is a creative hub where seeds are sown, sparks ignite and creative conversations unfurl. With a focus on artistic development, it is an inclusive program where we explore potential, commission new work, nurture emerging talent and trial works in development, all of which shape the future of Ensemble Theatre.

DIRECTOR AT WORK

An exclusive opportunity for theatregoers and aspiring theatre makers to go behind-the-scenes and see our skilled directors at work.



Join a small group for an intimate afternoon in the rehearsal room to discover how a play is brought to life, and share these exciting insights with your friends.

THE APPLETON LADIES' POTATO RACE

with Priscilla Jackman

ENSEMBLE ED EXCLUSIVE SESSION

Thu 28 Feb

3.30pm – 5.30pm

THE LAST FIVE YEARS

with Elsie Edgerton-Till

Tue 12 March

3.30pm – 5.30pm

MURDER ON THE WIRELESS

with Mark Kilmurry

Tue 28 May

3.30pm – 5.30pm

THE LAST WIFE

with Mark Kilmurry

ENSEMBLE ED EXCLUSIVE SESSION

Tue 13 Aug

3.30pm – 5.30pm

BABY DOLL

with Shaun Rennie

Thu 26 Sep

3.30pm – 5.30pm

\$35 per session. Teachers attend for free with groups of 12 or more students. Spaces are strictly limited, please call Box Office on (02) 9929 0644.

PLAY READINGS

Boatshed Play Readings are a unique experience for audiences to discover exciting new and classic plays. Be among the first audience to see a new work in development and help shape its future by participating in a lively creative discussion with the actors, director and writer to provide feedback about your experience.

Play readings will be announced throughout the year. Make sure you don't miss out by signing up to our e-newsletter or check the website for more details.



DIG DEEPER WITH A POST-SHOW Q&A

Ever wondered how the cast learn so many lines? Or what really resonates about the play with the director?

Join us at one of our post-show Q&A sessions for an engaging conversation about the play. Simply purchase tickets to a Q&A performance and stay in your seats after the show. Dates are marked in the performance calendar and on our website.



DISCOVER MORE AT
ensemble.com.au/boatshed



PRICING

MAIN STAGE SHOWS

Student /Teacher* tickets \$25

DIRECTOR AT WORK

Student /Teacher* \$35

*One teacher attends for free for every 12 paying students.



HOW TO BOOK

PHONE

Give us a call on (02) 9929 0644

EMAIL

Download a booking form at ensemble.com.au and email it to boxoffice@ensemble.com.au

PAPER BOOKING FORM

Just print out and fill in the attached booking form and post it to:

Ensemble Theatre
78 McDougall Street
Kirribilli NSW 2061

or fax it to:

Fax (02) 9954 4722

Just be sure to give us a call on (02) 9929 0644 immediately after faxing to confirm receipt.

EDUCATION BOOKING FORM 2019

CONTACT INFORMATION

SCHOOL:

SCHOOL ADDRESS:

SUBURB:

STATE:

POSTCODE:

BOOKING TEACHER:

MOBILE:

DEPARTMENT/POSITION:

EMAIL:

FAX:

ACCOUNTS DEPARTMENT CONTACT:

TELEPHONE:

EMAIL:

FAX:

CHOOSE PLAYS AND DATES

PLAYS \$25 PER TICKET	1st CHOICE DATE & TIME	2nd CHOICE DATE & TIME	NO. STUDENT TICKETS	NO. TEACHER TICKETS	NO. FREE TEACHER TICKETS	TOTAL TICKETS	TOTAL
THE BIG TIME							\$
DIPLOMACY							\$
A VIEW FROM THE BRIDGE							\$
THE LAST WIFE							\$
BABY DOLL							\$
DIRECTOR AT WORK SESSIONS \$35 PER TICKET			NO. STUDENT TICKETS	NO. TEACHER TICKETS	NO. FREE TEACHER TICKETS	TOTAL TICKETS	TOTAL
THE APPLETON LADIES' POTATO RACE Thu 28 Feb 3.30pm - 5.30pm							\$
THE LAST FIVE YEARS Tue 12 March 3.30pm - 5.30pm							\$
MURDER ON THE WIRELESS Tue 28 May 3.30pm - 5.30pm							\$
THE LAST WIFE Tue 13 Aug 3.30pm - 5.30pm							\$
BABY DOLL Thu 26 Sep 3.30pm - 5.30pm							\$

GRAND TOTAL: \$

TERM AND CONDITIONS | DEPOSIT DUE 3 WEEKS AFTER CONFIRMATION

- One teacher attends for free for every 12 paying students.
- 20% deposit is required within 3 weeks of making the reservation
- Changes to student numbers must be in writing and no later than 3 weeks prior to performance.
- Final payment is due 3 weeks prior to the performance
- Changes to student numbers after this time are at the discretion of Ensemble Theatre and subject to availability.
- The booking is made on behalf of the school and the school accepts liability to make payments on due dates.
- Completed forms to be returned to Ensemble Theatre.

SIGNATURE | I HAVE READ AND AGREE TO THE TERMS & CONDITIONS STATED IN THIS BOOKING FORM

SIGNATURE:

NAME:

DATE:

COMPLETED FORMS & INQUIRIES TO:

ENQUIRIES: 8918 3419 | MAIL: Ensemble Theatre, 78 McDougall Street, Kirribilli NSW 2061 | FAX: (02) 9954 4722
EMAIL: spiros@ensemble.com.au

